

## E. H. Wilson's Expedition to Korea from 1917 to 1919: Resolving Place Names of His Collections

Hui KIM<sup>a</sup>, Kae-Sun CHANG<sup>b</sup> and Chin-Sung CHANG<sup>b</sup>

<sup>a</sup>Department of Medicinal Plants Resources, Mokpo National University,  
Mokpo, 534-729 KOREA;

<sup>b</sup>The Arboretum and Department of Forest Resources, Agriculture and Life Sciences,  
Seoul National University, Seoul, 151-921 KOREA  
E-mail: quercus@plaza.snu.ac.kr

(Received on July 21, 2009)

E. H. Wilson visited the Korean peninsula for his plant explorations in 1917 and 1918, and additionally in 1919. The main localities visited were Oo-rong-do (Degelet) Island, Querpaert Island, Mt. Chiri-san, Pingyang, Keijyo, Koryo, Northeastern Korea, Mt. Konggo-san (three times in 1917 and 1918), and Unsan (twice in 1917 and 1918). During his explorations, Wilson collected numerous specimens of woody plants which were later studied by A. Rehder. All collection sites were described by Wilson using romanized characters with Japanese pronunciation. For this study, all locality names were reviewed using Wilson's specimens that are deposited at A and his personal records, and those were listed as the order of his collection dates. Collection numbers 8,416 to 9,337 (922 collections) were recorded in Wilson's 1917 exploration, while numbers 10,382 to 10,756 (375 collections) in 1918 and 1919. Based on his collection books and these numbers, 1,297 out of 3,268 (39.7 %) were collected exclusively in Korea at the same periods.

**Keywords:** E. H. Wilson, expedition, gazetteer, Korea, T. Nakai.

Over the past five years we have compiled gazetteers of foreign taxonomists who made collections of woody plants in Korea (Chang and Chang 2003, Chang and Choi 2004, Chang et al. 2004, Kim et al. 2006, Kim et al. 2007). Among those taxonomists are V. L. Komarov, U. Faurie, T. Nakai, and T. Uchiyama. Herbarium specimens, botanical literature and map resources were used to pinpoint collecting localities of botanists working in Korea. As in many other parts of the world, place names in Korea have changed over time, often reflecting the various political regimes. Because of the annexation of Korea by Japan in the first half of the 20<sup>th</sup> century, cities, towns, villages,

mountains, lakes, and other geographic features had both Japanese and Korean names applied to them, and often more local names as well. Our gazetteer includes more than 1,500 plant collecting localities, which were cited by Japanese, Russian, and western botanists.

Most local place names in Korea use Chinese characters, but those are not same with neither the Japanese nor the Chinese in terms of pronunciation. Japanese botanists and/or field guides, often transliterated these names into the Japanese. We have prepared a multilingual gazetteer in order to resolve the inconsistencies, uncertainties, and confusion surrounding place names used over the past 150 years by foreign

explorers and botanical collectors in Korea.

The focus of the current study is Wilson's expeditions to Korea. It complements an earlier contribution by Howard (1980) which provided lists of Wilson's Korean collections as well as a detailed background of his work.

### Wilson's exploration routes

We examined E. H. Wilson's Korean plant specimens collected in 1917 and 1918 that are housed in A (Arnold Arboretum, Harvard University) as well as his other records (Wilson 1918).

Wilson's reputation today rests primarily on his introduction of horticulturally valuable plants from eastern Asia into western gardens (Howard 1980). From his collections of seeds, bulbs and cuttings, over 1,000 species were introduced into England and the United States from his four expeditions to China between 1899 and 1911 (Rehder 1930) and from Japan, Taiwan, and Korea between 1914 and 1919. Additionally, he collected 16,000 herbarium specimens with many duplicates that were distributed in a number of western herbaria (Howard 1980, Briggs 1993).

Wilson conducted his sixth field expedition to the Far East between 1917 and 1919. He visited Korea three times: the first in 1917 to Oo-rong-do (Degelet) Island, Querpaert Island, Mt. Chiri-san, Pingyang, Keijyo (= Seoul), Koryo, Northeastern Korea, and Mt. Konggo-san; the second, in 1918, to have not been as well-documented in the many books and articles on Wilson as were his trips to Japan, Taiwan, and Northeast China; and, the third, additionally in 1919, just to Prov. S. Zenra. The main objective for this expedition was known to collect specimens and seeds of woody plants (Rehder 1930).

In January of 1917, at the age of 41, Wilson left for Japan and one month later arrived at Yokohama. He spent 17 days in Okinawa Island of the islands of Liukyu (Ryukyu) to collect 600 specimens representing approximately

100 species. After resting for several weeks, he departed for the Bonin Islands, where he collected from early April to early May.

Dr. Charles S. Sargent, who was the director of Arnold Arboretum, contacted Japanese taxonomists about Wilson's trip at that time (Howard 1980). In fact, the Japanese government had co-operated completely with Wilson's expedition to Taiwan and Korea as well as Japan. Since the annexation of Korea by Japan, Wilson received assistance from Japanese forestry officials many times. Professor T. Nakai of the University of Tokyo helped him collect plants in Korea (Briggs 1993).

On May 20 he made a trip to Korea. After arriving in Seoul (= Keijyo), he conducted his first collections in Mt. Nam-san. Wilson made two excursions with Nakai on Oo-ryong-do (= Dagelet) Island and Querpaert Island from May 29 to June 4 (6 days) and from October 28 to November 6 (10 days), respectively.

Wilson left Seoul with Nakai for Oo-ryong-do Island on May 24. On their way to the island, Wilson and Nakai stopped in Kazan (= Hwasan) near Suigen (= Suwon). Nakai kept doing his field trip at that time on Island Oo-ryong-do till June 22, but Wilson left for Seoul after June 4 though the reason is uncertain. He usually returned to the Chosen Hotel in Seoul where his family stayed during his long expeditions (Briggs 1993). After five days off in Seoul, he left for Northwest Korea (Prov. North Heian = Province Pyonganbuk-do) on June 10. He visited a gold mine managed by the French, and spent 11 days to collect specimens. Wilson went on to Pukchin from Taiyudo from June 22 to June 26, after which he returned to Seoul and stayed till July 14. While was in Seoul, he visited Chu-kusikiri near Koryo in Keiki province, 30 miles from Seoul. He left for Northeast China thorough Shingishu in northern Heian province in Korea (July 17 to 20, 4 days). He stayed in Seoul for 11 days and organized his long trip to northwestern Korea.

On August 1 he left Seoul by train to

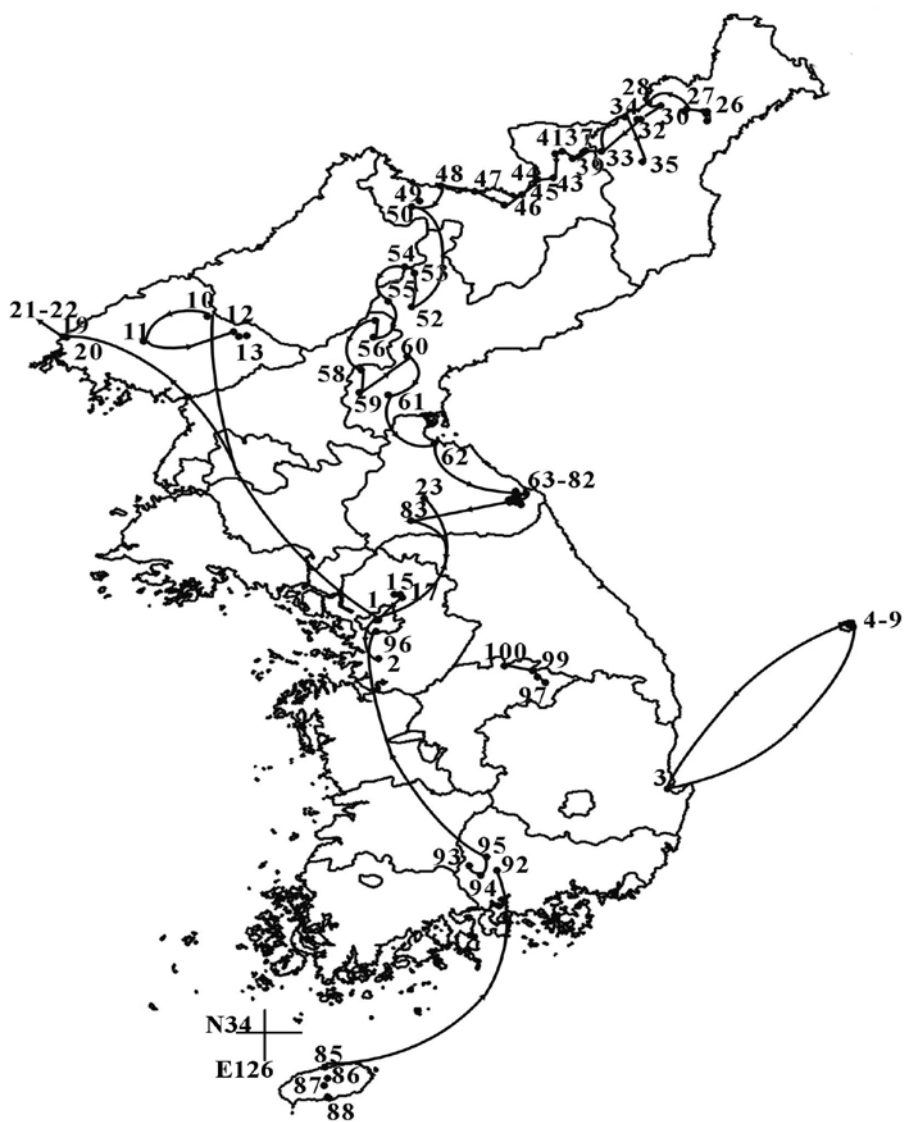


Fig. 1. The Korean itineraries of E. H. Wilson's sixth expedition in 1917. The numbers on the map refer to the localities listed in the gazetteer.

Gensan by way of Sempo of Kongen province. Due to obscure local place names, this collection route has been largely unknown to the western world. Additionally, Wilson left little information about this trip in his notes. Northeastern Korea is noted for its temperate forest. Exploration of this region had been conducted by Komarov in 1897 (Chang and Chang 2003, Chang and Choi 2004), Nakai in 1909, 1914, and 1918 (Kim et

al. 2006), and other Japanese taxonomists (T. Ishidoya in 1911, 1912, 1918, 1923; T. Mori in 1916, unpublished data). Without doubt Northeastern Korea was Wilson's main collecting area in Korea in terms of his collection numbers.

Wilson most likely did not collect plants during the time when he went by ship from Gensan to Funei in northern Kankyo. There is no any record of collections between August 4

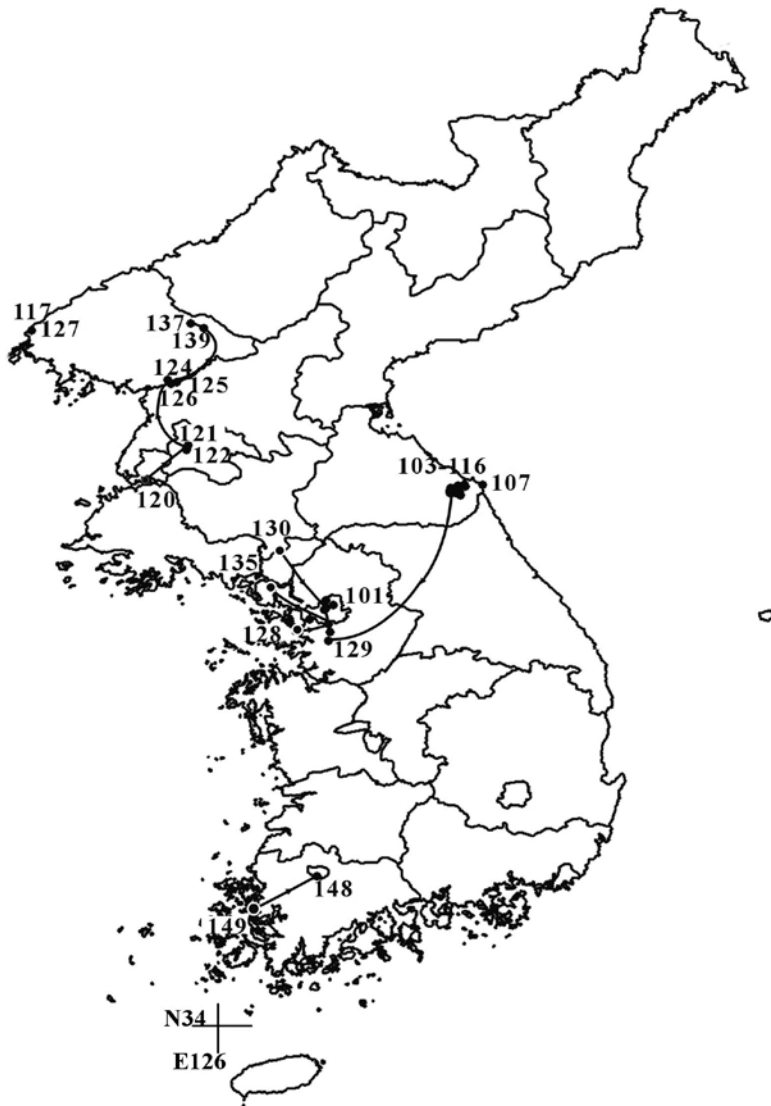


Fig. 2. E. H. Wilson's trip in 1918. The numbers on the map refer to the localities listed in the gazetteer.

and 13. Wilson's notes indicate that he began collecting on August 14 and traveled to southern Kankyo on August 30 through Shayurei, Mozan, Jyosohyo, Ensuido, Enshamen, Engan, Setsurei, and Saikarei in northern Kankyo. He then traveled in southern Kankyo for 11 days and went to northern Heian on September 9 through Keizanchin, Sanshui, and Kannin (= Kainin?). On September 14 Wilson returned to southern

Kankyo, traveled through Shinkori, Yeiko (= Eiko), Shaso, and arrived near Genson around September 23. This trip of 53 days was his longest in Korea (Fig. 1).

After two weeks in Seoul, Wilson conducted an 11-day expedition to Mt. Konggosan in Kogen province. He left for Gensan by train again on October 4 and moved to Onsenri and arrived in Mt. Konggosan on October 8.

Wilson investigated outer Konggo until October 10 then moved to inner Konggo, where he made collections from October 11 to 16 (Fig. 3).

He returned to Seoul, visited Mt. Namsan again on October 26, and then spent 10 days (October 28 – November 6) for collection on Querpaert Island with Nakai. He moved from the northern part of the island from Tchejyu to Seikiho through Mt. Hallai-san and to Kannonzi temple. After 2 day stay in the southern part of the island, where he collected many warm temperate tree species, Wilson returned along the same route to Tchejyu. On his way back to Seoul, he visited Mt. Chiri-san from November 13 to 16. Because it was winter, the number of collections from this area was relatively small.

Wilson traveled to Japan in early January of 1918 and then to Taiwan on January 22. He collected in Taiwan for three months and returned to Japan in April to collect in Kyushu.

After a short break in Japan, Wilson returned to Korea on June 17 with his family (Briggs 1993), then he continued his explorations until September 24 (Table 1, Fig. 2). He visited Mt. Konggo-san twice: June 30 – July 16 and September 11 – September 16 (Fig. 3). Wilson always attempted to collect both flowering and fruiting material from the same plant. He marked plants collected in flower and returned in the fall to collect fruits from the same plant. He believed that several visits were necessary for accurate collection times determining (Howard 1980). Wilson's notes indicated that he returned to Unsan in northwest Korea and stayed there for eight days (August 29 - -September 5) in order to collect fruits and seeds. Wilson occasionally made collections in Kwachonji, Hakusan, Suigen, and Poukhan-san around Seoul from August 16 to August 24 and again on September 21 and September 24.

Wilson finally returned to Boston on March 17, 1919 via Taiwan and Japan. On his way to Japan from Taiwan, he stopped in southern Korea (Kongju and Mopho) from December 25, 1918 to January 6, 1919 to make a few

collections.

According to Wilson's field notes, collection numbers 8,416 to 10,756 were used for the 1917–1919 Korean collections, with a total of approximately 30,000 specimens including duplicated ones. Collection numbers 8,416 to 9,337 were used for the 1917 collections, while numbers 10,382 to 10,756 were used for the 1918 and 1919.

The following chronology of Wilson's travels in Korea is based on Wilson's diaries, field notes, books and herbarium specimens, and additional library and digital resources (Howard 1980, Briggs 1993, The President and Fellows of Harvard College 2007).

#### **Year of 1917 (Fig. 1)**

May 21 Prov. Keiki: Keijyo, Mt. Nam-san

May 24 Prov. Keiki: Kazan

May 29 to June 4 Oo-rong-do Island

June 10 to 28 Prov. N. Heian: Unsan, Taiyudo (French mine), Takkol (= Takkori), Pukchin, Mabon

July 6 to 9 Prov. Keiki: Koryo

July 16 Prov. N. Heian: Yalu River, Shingishu

July 17 to July 20 Northeastern China (Dairen and Arthur port)

Aug. 1 to Sept. 23 Prov. N. Kankyo → Prov. S. Kankyo → Prov. N. Heian → Prov. Kogen (Northeast Korea)

Oct. 5 to 17 Prov. Kogen: Mt. Konggo-san (Fig. 3A)

Oct. 26 Prov. Keiki: Keijo, Mt. Nam-san

Oct. 28 to Nov. 6 Quelpaert Island, Mt. Hallai-san

Nov. 13 to 16 Prov. S. Keisho: Mt. Chiri-san

Nov. 23 Prov. Keiki: Mt. Kwankaku-san

Dec. 5 to 7 Prov. N. Chusei: Tanyo-gun

#### **Years of 1918 to 1919 (Fig. 2)**

June 17 Prov. Keiki: Keijo, Botanic Garden

June 22 Prov. Keiki: Keijo

June 30 to July 16 Prov. Kogen: Mt. Konggo-san (Fig. 3B)

July 22 Prov. Keiki: Keijo

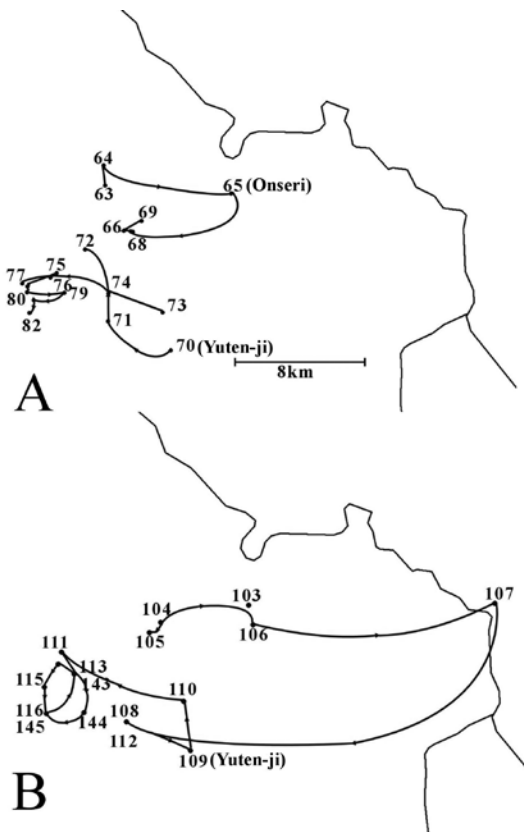


Fig. 3. E. H. Wilson's trip to Mt. Konggosan in 1917 (A) and in 1918 (B).

July 28 to Aug. 7 Prov. N. Heian: Chinnampo, Pingyang, Mochuri, Anshu, Shinanshu

Aug. 15 to 23 Prov. Keiki

Aug. 28 to Sept. 6 Prov. N. Heian: Mochuri, Unsan, Pukchin

Sept. 11 to 16 Prov. Kogen: Mt. Konggo-san (Fig. 3B)

Sept. 21 to 24 Prov. Keiki: Suigen

Dec. 25 to Jan. 6, 1919 Prov. S. Zenra: Kongju, Mopho

### Several major areas Wilson visited in 1917 and 1918

1) Oo-rong-do Island: This volcanic island is located some 137 km away from the east coast of Korean peninsula. The entire coastline has high rocky bluffs. Wilson made collections

on the southwest part of the island from May 30 to June 4 in 1917. He traveled from Dodo to Jeodo (incorrectly recorded as Udo) enroute to Sungin-bo (called Sang bong), which was the highest peak on this island, via Seijim-bo. The new species of *Cotoneaster*, collected by Wilson on May 30, was described and named by Nakai as *C. wilsonii* Nakai. He considered the flora of this island to be closely related to that of Japan (Briggs 1993).

2) Quelpaert Island: Mt. Hallai-san (1,950 m), which is the highest mountain in southern Korea, is a shielded volcano on Jeju Island. Wilson traveled from Jeju City on the north coast to Seikiho on the south coast and across the peak from October 28 to 31 in 1917. Collections were concentrated around Kannonzi Temple to Donnaeko Trail via Mt. Hallai-san. He collected the type specimen of *Abies koreana* Wilson on October 31 around the peak. From November 1 to 5 he collected evergreen forest species from the southern part of the island and deciduous forest species from Mt. Hallai-san (Briggs 1993).

3) Mt. Konggo-san (Figs. 3A, B): This mountain (1,638 m) runs along the east of the Korean peninsula and is currently located in North Korean area of Prov. Kogen (= Gangwon-do). Mt. Konggo-san is typically divided into three areas: inner Konggo, outer Konggo, and sea Konggo. Wilson made collections in all three areas. He visited Mt. Konggo-san twice during fall (October 5–16, 1917, September 11–16, 1918) and once during early summer (Jun 30 – July 16, 1918).

4) Mt. Chiri-san: This mountain, which is located in the southern region of the Korean peninsula, and spans three provinces: Prov. North Zenra (= Jeollabuk-do), Prov. South Zenra (= Jeollanam-do), and Prov. South Keisho (= Gyeongsangnam-do). Wilson's collections (November 13–16, 1917) were from the province South Keisho (= South Gyeongsang, or Gyeongsangnam-do). Records indicated that he visited the highest peak of the mountain, Tinno-

bo (= Cheonhwang-bong, 1,917 m).

### **A gazetteer for Wilson's collections**

Because locality data associated with specimens may be inaccurate, obscure, fragmented or even cryptic, it is often difficult to determine exactly where a specimen was collected. Additionally, the names of geographic places and features may change over time. Reconstructing the route of a collector is an invaluable first step in trying to relate historic toponyms to current geography.

Wilson used one or two representative place names for each of his collection sites and provided very few details about his routes. Nakai, on the other hand, always recorded the date and exact locality information on his collection labels (Kim et al. 2006). These details were invaluable in reconstructing Wilson's collection localities on Oo-rong-do and Quelpaert Islands. Wilson also often recorded two widely separated places on the same date and misspelled many place names when transferring details from his field books to labels. Wherever possible, we relied on his notebooks for determining details of his collections.

The list of place names that Wilson used was extracted from his specimen labels, from 288 of images on the website (The President and Fellows of Harvard College 2007), and from Howard (1980). The Wilson's locality names are based on current Korean place names compiled by The National Institute of The Korean language of ROK (Republic of Korea, <http://www.korean.go.kr/eng/index.jsp>). Dates on which the localities were visited were given based on labels of specimens deposited at A. Over the course of this project, more current maps of North Korea (DPRK, Democratic People's Republic of Korea) have become available. It was not practical, however, to change the standard accepted names, because the North Korean government has created new names for many places. Our gazetteer is intended to be a reference for place names which were

used until 1945. To this end, we relied on the maps compiled by Nakai (1918), the JoongAng Daily News (<http://nk.joins.com/map/>), the National Geospatial-Intelligence Agency (NGA) (<http://geonames.nga.mil/ggmaviewer/MainFrameSet.asp>), and the numerous maps that accompanied the accounts of the explorers in the region.

The gazetteer is arranged by chronology (Table 1) and alphabetical order of place names (Table 2). To the extent that information is available, we provided: 1) Romanized place names which Wilson used on labels or records (The President and Fellows of Harvard College 2007), 2) the date on which the localities were visited, 3) modern equivalents of place names based on Korean pronunciation, 4) Chinese characters in Table 1 and we added the latitude and longitude coordination in Table 2. We have inserted a question mark to indicate information that is in doubt. Numbered entries in the gazetteer can be found, by number, on the accompanying maps (Figs.1–3).

This study was carried out with the support of 'Forest Science & Technology Projects (Project No. S210707L1010) provided by Korea Forest Service and the Faculty Research grant provided by College of Agriculture and Life Sciences of Seoul National University to the corresponding author. We thank the staffs of the Harvard University Herbaria, the Arnold Arboretum and the Harvard Botany Library for their help in finding Wilson's specimens and relevant literature. We are grateful to Ms. Susan Kelly, who provided valuable comments on earlier drafts.

### **Literature cited**

- Briggs R. W. 1993. The Great Plant Collectors 'Chinese Wilson' A Life of Ernest H. Wilson 1876–1930. The Royal Botanic Gardens, Kew.
- Chang C. S. and Chang G. S. 2003. Reexamination on V. L. Komarov's collection sites in North Korea – mainly based on Flora Manshuriae. *J. Korean Pl. Taxon.* **33**(2): 203–218 (in Korean).

- Chang C. S. and Choi B. H. 2004. Reexamination on V. L. Komarov's collection sites in North Korea (II) – mainly based on Nakai's Flora Koreana vol. II. J. Korean Pl. Taxon. 34(1): 37–41 (in Korean).
- Chang C. S., Choi B. H., Kim H. and Lee J. Y. 2004. Reexamination on foreign collectors' sites and exploration routes in Korea - with respect to U. Faurie. J. Korean Pl. Taxon. 34(2): 87–96 (in Korean).
- Howard R. A. 1980. E. H. Wilson as a botanist (Part I). *Arnoldia* 40(3):102–138, & 40(4): 154–193.
- Kim H., Chang G. S., Chang C. S. and Choi B. H. 2006. Reexamination on foreign collectors' sites and exploration routes in Korea (II) – with respect to T. Nakai. J. Korean Pl. Taxon. 36(3): 227–255 (in Korean).
- Kim H., Choi B. H., Chang C. S. and Chang K. S. 2007. Reexamination on foreign collectors' sites and exploration routes in Korea (III) – with respect to T. Uchiyama. J. Korean Pl. Taxon. 37(2): 203–215 (in Korean).
- Nakai T. 1918. Report on the Vegetation of Diamond Mountains, Corea. The Government of Chosen, Seoul.
- Rehder A. 1930. Ernest Henry Wilson. J. Arnold Arbor. 11(4): 181–192.
- The President and Fellows of Harvard College 2007. Botanical and Cultural Images of Eastern Asia; [http://www.arboretum.harvard.edu/programs/eastern\\_asia/explorers\\_wilson.html](http://www.arboretum.harvard.edu/programs/eastern_asia/explorers_wilson.html), accessed on 06 June 2009, 16:00.
- Wilson E. H. 1918. The Vegetation of Korea. 16 pp. with 26 pictures. Transactions of the Korean Branch of the The Royal Asiatic Society, Seoul.
- Wilson E. H. 1919. A phytogeographical sketch of the ligneous flora of Korea. J. Arnold Arbor. 1(1): 32–43.

金 輝<sup>a</sup>, 張 桂羨<sup>b</sup>, 張 珍成<sup>b</sup>: E. H. Wilson 朝鮮半島調査 (1917 ~ 1919) : 植物標本採集地の解析

E. H. Wilson は植物採集のために 1917 年 ~ 1919 年に朝鮮半島を訪れている。主な採集地は、鬱陵島 (Oo-rong-do Island [Degelet Island]), 濟州島 (Querpaert Island), 智異山 (Mt. Chiri-san), 平壤 (Pingyang), 京城 (Keijyo), 光陵 (Koryo), 朝鮮半島北東部, 金剛山 (Mt. Konggo-san) および雲山 (Unsan) である。彼はこの採集旅行でたくさんの木本植物を採集しており, それらは後にハーバード大学アーノルド樹木園の A. Rehder によって研究された。当時朝鮮半島は日本に併合されていたため, Wilson はすべての採集地名を日本語発音のローマ字表記で記載した。

本研究では, ハーバード大学植物標本館 (A) に収蔵されている Wilson の標本および彼の採集ノートを調査し, 朝

鮮半島における当時の採集地名を採集日の順にリストアップし調査ルートを確認し, かつ現在の地名との照合も行った。また, 当時の採集地名をアルファベット順に配列した別表も作成した。彼のノートに記録されていた採集番号によると, 1917 年の調査では採集番号 8,416 から 9,337 までの 922 コレクションを収集し, 続く 1918 年から 1919 年の調査では採集番号 10,382 から 10,756 までの 375 コレクションを収集している。1917 年 ~ 1919 年に朝鮮半島で採集されたこれら計 1,297 コレクションは, Wilson が採集した全 3,268 コレクションのうちの 39.7% に相当するものであった。

<sup>a</sup> 韓国木浦大学校韓薬資源学科,  
<sup>b</sup> 韓国ソウル大学樹木園・山林科学部)



Table 1. The following list contains all names originally mentioned by E. H. Wilson in his labels, field notes, and his photographic records. The local names are listed in chronological order by his collection trip. Orthographic error (\*) was indicated here

No.	Current name	Date	Wilson's name	
			Romanized name	Chinese characters
<b>Year 1917</b>				
1	Seoul, Mt. Namsan	May 21	Seoul (Keijyo), Nam-san	南山
2	Gyeonggi-do, Hwaseong-si, Taean-eup, Annyeong-ri, Hwasan	May 24	Prov. Keiki, Kazan	華山
3	Gyeongsangnam-do, Pohang-si	May 29	Prov. N. Keshio, Hoko	浦項
4	Gyeongsangbuk-do, Ulleungdo (island), Jeo-dong	May 31	Oo-rong-do (Degelet Island), Udo	芋洞→芋洞*
5	Gyeongsangbuk-do, Ulleungdo (island), Do-dong	May 30, June 1	Oo-rong-do (Degelet Island), Do-do	道洞
6	Gyeongsangbuk-do, Ulleungdo (island), Mt. Seonginbong	June 2	Oo-rong-do (Degelet Island), Seijim-bo	聖人峰
7	Gyeongsangbuk-do, Ulleungdo (island), Nari-dong	June 2	Oo-rong-do (Degelet Island), Nari-do	羅里洞
8	Gyeongsangbuk-do, Ulleungdo (island), Jeo-dong	June 3	Oo-rong-do (Degelet Island), Udo	芋洞→芋洞*
9	Gyeongsangbuk-do, Ulleungdo (island), Do-dong	June 3–4	Oo-rong-do (Degelet Island), Do-do	道洞
10	Pyeonganbuk-do, Dongchang-gun, Daeyou-dong	June 10, 15–18	Prov. N. Heian, Taiyudo	大楡洞
11	Pyeonganbuk-do, Guseong-gun, Cheonma-myeon, Tap-dong	June 21–24	Prov. N. Heian, Takkol (= Takkori)	Tapgol
12	Pyeonganbuk-do, Bukjin-eup	June 26	Prov. N. Heian, Pukchin	北鎮
13	Pyeonganbuk-do, Mt. Mabong	June 28	Prov. N. Heian, Ma-bon	魔峰
14	Pyeonganbuk-do, Unsan-gun, Unsan-myeon	June 28	Prov. N. Heian, Unsan	雲山
15	Gyeonggi-do, Pocheon-si, Jukyeop-Soheul-eup, Mt. Jugyeopsan	July 6	Prov. Keiki, Chukusiki-ri	竹(葉) -蘇屹里?
16	Gyeonggi-do, Pocheon-si, Soheul-eup, Mt. Jugyeopsan	July 6	Prov. Keiki, Chikuyo-san	竹葉山
17	Gyeonggi-do, Pocheon-si, Soheul-eup, Gwangreung	July 7–9	Prov. Keiki, Koryo	光陵
18	Seoul	July 13	Seoul (Keijyo)	京城
19	Pyeonganbuk-do, Amrokgang (river)	July 16	Prov. N. Heian-S. Heian, Yalu River	鴨綠江
20	Pyeonganbuk-do, Sinuiju-si	July 16	Prov. N. Heian, Shingishu	新義州
21	Manchuria (= N.E. China), Dairen	July 19	Manchuria (= N.E. China), Dairen	大連
22	Manchuria (= N.E. China), Arthur Port	July 20	Manchuria (= N.E. China), Arthur Port	旅順
23	Gangwon-do, Pyeonggang-gun, Gosab-myeon, Sepo-ri	Aug. 1–3	Prov. Kogen (→ Prov. S. Kankyo)*, Sempo (= Sempo?)	洗浦
24	Hamgyeongbuk-do, Buryeong-gun, Buryeong-dong	Aug. 14	Prov. N. Kankyo, Funei	富寧
25	Hamgyeongbuk-do, Buryeong-gun, Mt. Muneongdae	Aug. 15	Prov. N. Kankyo, Buroyo-dai	武陵臺
26	Hamgyeongbuk-do, Mt. Gomusan	Aug. 15	Prov. N. Kankyo, Komozan	古茂山
27	Hamgyeongbuk-do, Musan-gun and Buryeong-gun, Mt. Chayouryeong	Aug. 15–16	Prov. N. Kankyo, Shayu-rei	車踰嶺
28	Hamgyeongbuk-do, Musan-gun, Musan-eup	Aug. 16	Prov. N. Kankyo, Mozan	茂山
29	Hamgyeongbuk-do, Dong-myeon, Chayou-dong	Aug. 16	Prov. N. Kankyo, Shayutong	車踰洞
30	Hamgyeongbuk-do, Musan-gun, Jucho	Aug. 17–18	Prov. N. Kankyo, Jyosohyo	朱草
31	Hamgyeongbuk-do, Musan-gun, Yeonsang-myeon, Yeonsu-dong	Aug. 18	Prov. N. Kankyo, Ensui-do	延水洞

32	Hamgyeongbuk-do, Musan-gun, Yeonsa-myeon	Aug. 18	Prov. N. Hankyo, Ensha-men	延社面
33	Hamgyeongbuk-do, Buryeong-gun, Buryeong-myeon, Youpyeong-dong	Aug. 18-19	Prov. N. Kankyo, Yuhyo	楡坪
34	Hamgyeongbuk-do, Musan-gun, Seoha-myeon, Imgang-dong	Aug. 22-23	Prov. N. Kankyo, Engan	臨江
35	Hamgyeongbuk-do, Musan-gun, Mt. Seolryeong	Aug. 25-26	Prov. N. Kankyo, Setsu-rei (Snow Mt.)	雪嶺
36	Hamgyeongbuk-do, Musan-gun	Aug. 29	Prov. N. Kankyo, Soshyo	朱草?
37	Hamgyeongnam-do, Hyesan-gun, Tokripdong	Aug. 30	Prov. N. Kankyo, Tokuitsudo	德立洞
38	Hamgyeongbuk-do, Dumangang (river)	Aug. 30	Prov. N. Kankyo, Tumen River	豆滿江
39	Pyeonganbuk-do, Amrokgang (river)	Aug. 30	Prov. N. Kankyo/S. Kankyo, Yalu River	鴨綠江
40	Hamgyeongbuk-do, Hyesan-gun, Bocheon-myeon, Mt. Gwanksabong	Aug. 30	Prov. N. Kankyo, Kankyo-ho	郭沙峰?
41	Hamgyeongbuk-do, Hyesan-gun, Buk-dong?	Aug. 30	Prov. N. Kankyo, Hokudo	北洞?
42	Hamgyeongnam-do, Hyesan-gun, Daejin-myeon, Mt. Choigaryeong	Aug. 30-31	Prov. N. Kankyo/S. Kankyo, Saika-rei	崔哥嶺
43	Hamgyeongnam-do, Daejin-myeon, Daejinpyeong-ri	Sep. 1	Prov. S. Kankyo, Taichinchyo-ri	大鎮坪里
44	Hamgyeongbuk-do, Hyesan-gun, Bocheon-myeon, Bocheonbo (reservoir)	—	Prov. S. Kankyo, Futempo	晋天堡
45	Hamgyeongnam-do, Jangjin-gun, Hyesansin	Sep. 4	Prov. S. Kankyo, Keizanchin	惠山鎮
46	Hamgyeongnam-do, Samsu-gun, Samsu-myeon	Sep. 5	Prov. S. Kankyo, Sanshui (= Shanshui)	三水
47	Hamgyeongnam-do, Samsu-gun, Sinpa-myeon, Singalpa-ri	Sep. 5	Prov. S. Kankyo, Sinkabachin	新架坡嶺
48	Pyeonganbuk-do, Huchang-gun, Hujugo-eup	—	Prov. N. Heian, Koshukoyu	厚州古邑
49	Pyeonganbuk-do, Uiju-gun, Oksang-myeon, Namsa-dong	—	Prov. N. Heian, Nansha	南社
50	Pyeonganbuk-do, Uiju-gun, Oksang-myeon, Namsa-dong	—	Prov. N. Heian, Nanshatongu	南社洞口
51	Pyeonganbuk-do, Uiju-gun, Gwangpyeong-myeon, Panmak-dong	Sep. 8-9	Prov. S. Kankyo, Hanbakudo	判幕洞
52	Hamgyeongnam-do, Jangjin-gun, Jangjin-myeon	Sep. 14	Prov. S. Kankyo, Choshin	長津
53	Hamgyeongnam-do, Jangjin-gun, Gyeol-mool-joong	Sep. 15	Prov. S. Kankyo, Ketsubusturi	結物中
54	Hamgyeongnam-do, Jangjin-gun, Sangnam-myeon, Deoksil-ri	Sep. 15	Prov. S. Kankyo, Tokujitsuri	德實里
55	Hamgyeongnam-do, Sinheung-gun, Sinheung-myeon	Sep. 17	Prov. S. Kankyo, Shinkori (= Shinkari?)	新興
56	Hamgyeongnam-do, Jangjin-gun, Mt. Nangrimsan	Sep. 17	Prov. S. Kankyo/Prov. S. Heian, Loaling-san	狼林山
57	Pyeongannam-do, Yeongwon-gun, Daeheung-myeon, Sachang-ri	Sep. 18	Prov. S. Heian, Shaso	社倉
58	Hamgyeongnam-do, Youngheung-gun, Yodeok-myeon, Daesuk-ri	Sep. 20-22	Prov. S. Kankyo, Taishuku-ri	大淑里
59	Hamgyeongnam-do, Youngheung-gun, Yeongheung-eup	Sep. 23	Prov. S. Kankyo, Yeiko (= Eiko)	永興
60	Hamgyeongnam-do, Jeongpyeong-gun, Guemjingang (river)	—	Prov. S. Kankyo, Genson (River)	金津江
61	Hamgyeongnam-do, Yeongheung-gun, Deokheung-myeon, Yongcheon-ri	—	Prov. S. Kankyo, Ryusen	龍川
62	Hamgyeongnam-do, Wonsan-si	Oct. 5	Prov. Kogen, Gensan	元山
63	Gangwon-do, Goseong-gun, Oigeumgang-myeon, Mt. Geumgangsán, Gwameumbong	Oct. 8	Prov. Kogen, Mt. Konggosan, Kannom-bo	觀音峯
64	Gangwon-do, Goseong-gun, Oigeumgang-myeon, Mt. Geumgangsán, Manmulsang	Oct. 8	Prov. Kogen, Mt. Konggosan, Bambutsusu (= Bambususo)	萬物相

65	Gangwon-do, Goseong-gun, Oigeumgang-myeon, Onjeong-ri	Oct. 9–10	Prov. Kogen, Mt. Konggosan, Onsenri	溫井里
66	Gangwon-do, Goseong-gun, Oigeumgang-myeon, Onjeong-ri, Mt. Geumgangsán, Guryongpokpo (waterfall)	Oct. 9	Prov. Kogen, Mt. Konggosan, Kyuryu= Kyuryo-en (= Nine- Dragon Pool) waterfall	九龍瀑淵
67	Gangwon-do, Goseong-gun, Oigeumgang-myeon, Onjeong-ri, Mt. Geumgangsán, Guryongbong (peak)	Oct. 9	Prov. Kogen, Mt. Konggosan, Kyuruen-bo	九龍峯
68	Gangwon-do, Goseong-gun, Oigeumgang-myeon, Onjeong-ri, Mt. Geumgangsán, Bibongpokpo (waterfall)	Oct. 9	Prov. Kogen, Mt. Konggosan, Hihobo	飛鳳瀑
69	Gangwon-do, Goseong-gun, Oigeumgang-myeon, Onjeong-ri, Okryu-dong	Oct. 9	Prov. Kogen, Mt. Konggosan, Gyokuryudo	玉流洞
70	Gangwon-do, Goseong-gun, Seo-myeon, Mt. Geumgangsán, Yujeomsa (temple)	Oct. 11	Prov. Kogen, Mt. Konggosan, Yuten-ji (= Yukun-ji)	楡岾寺
71	Gangwon-do, Hoiyang-gun, Naeguemgang-myeon, Mt. Gemgangsán, Mireukbong (peak)	Oct. 12	Prov. Kogen, Mt. Konggosan, Miroku-ho	彌勒峰
72	Gangwon-do, Mt. Geumgangsán, Birobong (peak)	Oct. 13	Prov. Kogen, Mt. Konggosan, Biro- ho	毘盧峯
73	Gangwon-do, Goseong-gun, Oigeumgang-myeon, Mt. Geumgangsán, Eumseonda (peak)	Oct. 13	Prov. Kogen, Mt. Konggosan, Insen-dai	隱仙臺
74	Gangwon-do, Hoiyang-gun, Naeguemgang-myeon, Mt. Geumgangsán, Naemujaeryeong (peak)	Oct. 13	Prov. Kogen, Mt. Konggosan, Nemon-rei	內霧 (在)嶺
75	Gangwon-do, Hoiyang-gun, Naeguemgang-myeon, Mt. Geumgangsán, Mahayeonam (temple)	Oct. 14	Prov. Kogen, Mt. Konggosan, Makaen-an	摩訶衍庵
76	Gangwon-do, Hoiyang-gun, Naeguemgang-myeon, Jangyeon-ri, Mt. Geumgangsán, Bodeokgul (temple)	Oct. 14	Prov. Kogen, Mt. Konggosan, Futoku-kutsu	普德窟
77	Gangwon-do, Hoiyang-gun, Naeguemgang-myeon, Jangyeon-ri, Mt. Geumgangsán, Jeongyangsa (temple)	Oct. 14	Prov. Kogen, Mt. Konggosan, Seiyoji	正陽寺
78	Gangwon-do, Hoiyang-gun, Naeguemgang-myeon, Jangyeon-ri, Mt. Geumgangsán, Pyohunsa (temple)	Oct. 14	Prov. Kogen, Mt. Konggosan, Hyokun-ji	表訓寺
79	Gangwon-do, Hoiyang-gun, Naeguemgang-myeon, Mt. Geumgangsán, Mangundae (peak)	Oct. 15	Prov. Kogen, Mt. Konggosan, Bogun-dai	望軍臺
80	Gangwon-do, Hoiyang-gun, Naeguemgang-myeon, Jangyeon-ri, Mt. Geumgangsán, Baekhwaam (temple)	Oct. 16	Prov. Kogen, Mt. Konggosan, Hakka-an	白華庵
81	Gangwon-do, Hoiyang-gun, Naeguemgang-myeon, Jangyeon-ri, Mt. Geumgangsán, Anyangsa (temple)	Oct. 16	Prov. Kogen, Mt. Konggosan, Anyo	安養(庵)
82	Gangwon-do, Hoiyang-gun, Naeguemgang-myeon, Mt. Geumgangsán, Jangansa (temple)	Oct. 17	Prov. Kogen, Mt. Konggosan, Choan-ji (= Chuan-ji)	長安寺
83	Gangwon-do, Pyeonggang-gun, Pyeonggang-eup, Bokgye-ri	—	Prov. Kogen, Fukkei	福溪
84	Seoul, Mt. Namsan	Oct. 26	Seoul (Keijyo), Nam-san,	南山
85	Jejudo (island)	Oct. 28–31	Querpaert Island	濟州道
86	Jejudo (island), Ara-dong, Mt. Hallasan, Gwameumsa (temple)	Oct. 30	Querpaert Island, Kannon-zi	觀音寺
87	Jejudo (island), Mt. Hallasan	—	Querpaert Island, Mt. Hallaisan	漢拏山
88	Jejudo (island), Seoguiipo-si	Nov. 3	Querpaert Island, Sopoto (= Soputo)	西歸浦
89	Jejudo (island), Seoguiipo-si, Dongheung-dong, Jeongbangpokpo (waterfall)	Nov. 3	Querpaert Island, Tenchien (waterfall)	正房 (瀑布)
90	Jejudo (island), Ara-dong, Mt. Hallasan, Gwameumsa (temple)	Nov. 5	Querpaert Island, Kannon-zi	觀音寺
91	Jejudo (island), Mt. Hallasan	Nov. 5–6	Querpaert Island, Mt. Hallaisan	漢拏山
92	Gyeongsangnam-do, Sancheong-gun, Dansung-myeon	Nov. 13–15	Prov. S. Keisho, Tanjyo	丹城
93	Chungcheongbuk-do, Jecheon-gun, Deoksan?	Nov. 14	Prov. S. Keisho, Mt. Chiri-san, Taksan	德山

94	Gyeongsangnam-do, Sancheong-gun and Hamyang-gun, Macheon-myeon, Mt. Jirisan, Choenwangbong (peak)	Nov. 16	Prov. S. Keisho, Mt. Chiri-san, Tenno-bo (= Tinnno-bo)	天王峰
95	Gyeongsangnam-do, Sancheong-gun	Nov. 16	Prov. S. Keisho, Sansai (Sansei?)	山清
96	Gyeonggi-do, Gwacheon-si and Anyang-si, Mt. Gwanaksan	Nov. 23	Prov. Keiki, Mt. Kangakusan	冠岳山
97	Chungcheongbuk-do, Danyang-gun	Dec. 5	Prov. N. Chusei, Tanyo-gun	丹陽郡
98	Chungcheongbuk-do, Danyang-gun, Maepoeup	Dec. 5	Prov. N. Chusei, Baiho-men	梅浦邑
99	Chungcheongbuk-do, Danyang-gun, Maepoeup, Maeporyeong (hill)	Dec. 5	Prov. N. Chusei, Baiho-rei	梅浦嶺
100	Chungcheongbuk-do, Jechoen-gun, Baegun-myeon, Pyeong-dong	Dec. 6	Prov. N. Chusei, Heido	坪洞
<b>Year 1918</b>				
101	Seoul, Dongdaemun-gu, Cheongryangri-dong	June 17	Keijyo, Botanic Garden	清凉里
102	Seoul	June 22	Keijyo	京城
103	Gangwon-do, Goseong-gun, Hoiyang-gun and Tongcheon-gun, Mt. Geumgang-san	June 30– July 1	Prov. Kogen, Mt. Konggosan	金剛山
104	Gangwon-do, Goseong-gun, Oigeumgang-myeon, Onjeong-ri, Okryu-dong	July 2	Prov. Kogen, Mt. Konggosan, Gyokuryudo	玉流洞
105	Gangwon-do, Goseong-gun, Oigeumgang-myeon, Onjeong-ri, Mt. Geumgangsán, Guryongbong (waterfall)	July 2	Prov. Kogen, Mt. Konggosan, Kyuryu= Kyuryo-en(=Nine-Dragon Pool) waterfall	九龍瀑瀾
106	Gangwon-do, Goseong-gun, Oigeumgang-myeon, Yangjin-ri, Mt. Geumgangsán, Syngyesa (temple)	July 2	Prov. Kogen, Mt. Konggosan, Shinke-ji	新溪寺
107	Gangwon-do, Goseong-gun, Seo-myeon, Mt. Geumgangsán, Haegeumgang	July 4	Prov. Kogen, Mt. Konggosan, Umikongo	海金剛
108	Gangwon-do, Hoiyang-gun, Naegeumgang-myeon, Mt. Gemgangsán, Mireukbong (peak)	July 6	Prov. Kogen, Mt. Konggosan, Miroku-ho	彌勒峰
109	Gangwon-do, Goseong-gun, Seo-myeon, Mt. Geumgangsán, Yujeomsa (temple)	July 7	Prov. Kogen, Mt. Konggosan, Yuten-ji (= Yukun-ji)	楡岾寺
110	Gangwon-do, Goseong-gun, Seo-myeon, Mt. Geumgangsán, Sibipokpo (waterfall)	July 7	Prov. Kogen, Mt. Konggosan, Sentan (waterfall)	十二 (暴下)
111	Gangwon-do, Hoiyang-gun, Naeguemgang-myeon, Jangyeon-ri, Mt. Geumgangsán, Sumoam (temple)	July 7	Prov. Kogen, Mt. Konggosan, Sumi-an	須彌庵
112	Gangwon-do, Hoiyang-gun, Naegeumgang-myeon, Mt. Gemgangsán, Mireukbong (peak)	July 9	Prov. Kogen, Mt. Konggosan, Miroku-ho	彌勒峰
113	Gangwon-do, Hoiyang-gun, Naegeumgang-myeon, Mt. Gemgangsán, Mahayeonam (temple)	July 10	Prov. Kogen, Mt. Konggosan, Makaen-an	摩訶衍庵
114	Gangwon-do, Hoiyang-gun, Naeguemgang-myeon, Jangyeon-ri, Mt. Geumgangsán, Seonam (temple)	July 11	Prov. Kogen, Mt. Konggosan, Sen-an	船庵
115	Gangwon-do, Hoiyang-gun, Naeguemgang-myeon, Jangyeon-ri, Mt. Geumgangsán, Pyohunsa (temple)	July 16	Prov. Kogen, Mt. Konggosan, Hyokun-ji	表訓寺
116	Gangwon-do, Hoiyang-gun, Naeguemgang-myeon, Mt. Geumgangsán, Jangansa (temple)	July 16	Prov. Kogen, Mt. Konggosan, Choan-ji (=Chuan-ji)	長安寺
117	Pyeongannbuk-do, Sinuiju-si	July 16	Prov. N. Heian, Shingishu	新義州
118	Seoul	July 22	Seoul (= Keijo)	京城
119	Seoul, Eunpyeong-gu, Jongno-gu, Seoungbuk-gu and Gangbuk-gu / Gyeonggi-do, Goyang-si, Deogyang-gu, Mt. Bukhansán	July 22	Prov. Keiki/Keijo, Mt. Poukhan-san	北漢山
120	Pyeongannam-do, Jinnampo-si	July 28	Prov. N. Heian, Chinnampo	鎮南浦
121	Pyeongannam-do, Pyeongyang-si, Mt. Moranbong, Morandae (peak)	July 29	Prov. N. Heian, Pingyang, Botan-dai	牡丹臺

122	Pyeongnanam-do, Daedonggang (river)	July 29	Prov. N. Heian, Pyongyang, Dido (river)	大同江
123	Pyeongannam-do, Pyeongyang-si	July 29	Prov. N. Heian, Pyongyang	平壤
124	Pyeonganbuk-do, Bakcheon-gun, Dongnam-myeon, Maengjung-dong	July 30–31	Prov. N. Heian, Mochuri	孟中里
125	Pyeongannam-do, Anju-gun	—	Prov. N. Heian, Anshu	安州
126	Pyeongannam-do, Anju-gun, Sinanju-myeon	—	Prov. N. Heian, Shinanshu	新安州
127	Pyeonganbuk-do, Sinuiju-si	Aug. 7	Prov. N. Heian, Shingishu	新義州
128	Gyeonggi-do, Incheongwanyeok-si, Jemulpo (=Incheon-si)	Aug. 7	Prov. Keiki, Chemulpo	濟物浦
129	Gyeonggi-do, Gwacheon-si, Uiwang-si and Seongnam-si, Mt. Cheonggyesan	Aug. 16–17	Prov. Keiki, Haku-san	白山
130	Gyeonggi-do, Gwaneum?	Aug. 18	Prov. Keiki, Kwannon	觀音
131	Gyeonggi-do, Gaeseong-si, Bakyeonpokpo (waterfall)	Aug. 20	Prov. Keiki, Bokuen (waterfall)	朴淵 (瀑布)
132	Seoul	Aug. 21	Seoul (Keijo)	京城
133	Gyeonggi-do, Gwacheon-si, Gwacheonji (pond)	Aug. 19	Prov. Keiki, Kwachoji	果川池
134	Gyeonggi-do, Gwangmyeong-si, Sakdong	Aug. 23	Prov. Keiki, Sakol	沙洞 ?
135	Gyeonggi-do, Ganghwado (island)	Aug. 23–24	Prov. Keiki, Kanghai	江華
136	Pyeonganbuk-do, Bakcheon-gun, Dongnam-myeon, Maengjung-dong	Aug. 28	Prov. N. Heian, Mochuri	孟中里
137	Pyeonganbuk-do, Unsan-gun, Unsan-myeon	Sep. 1	Prov. N. Heian, Unsan	雲山
138	Pyeonganbuk-do, Bukjin-eup	Sep. 2, 4	Prov. N. Heian, Pukchin	北鎭
139	Pyeonganbuk-do, Unsan-gun, Unsan-myeon	Sep. 5	Prov. N. Heian, Unsan	雲山
140	Pyeonganbuk-do, Bakcheon-gun, Dongnam-myeon, Maengjung-dong	Sep. 6	Prov. N. Heian, Mochuri	孟中里
141	Gangwon-do, Goseong-gun, Hoiyang-gun and Tongcheon-gun, Mt. Geumgang-san	—	Prov. Kogen, Mt. Konggosan	金剛山
142	Gangwon-do, Hoiyang-gun, Naeguemgang-myeon, Mt. Geumgangsán, Jangansa (temple)	Sep. 11, 14	Prov. Kogen, Mt. Konggosan, Choan-ji (= Chuan-ji)	長安寺
143	Gangwon-do, Hoiyang-gun, Naeguemgang-myeon, Mt. Gemgangsán, Mahayeonam (temple)	Sep. 13	Prov. Kogen, Mt. Konggosan, Makaen-an	摩訶衍庵
144	Gangwon-do, Hoiyang-gun, Naeguemgang-myeon, Jangyeon-ri, Mt. Geumgangsán, Yeongwonam (temple)	Sep. 14	Prov. Kogen, Mt. Konggosan, Reigan-an	靈源庵
145	Gangwon-do, Hoiyang-gun, Naeguemgang-myeon, Mt. Geumgangsán, Jangansa (temple)	Sep. 16	Prov. Kogen, Mt. Konggosan, Choan-ji (= Chuan-ji)	長安寺
146	Gyeonggi-do, Suwon-si	Sep. 21	Prov. Keiki, Suigen	水原
147	Seoul, Eunpyeong-gu, Jongno-gu, Seoungbuk-gu and Gangbuk-gu /Gyeonggi-do, Goyang-si Deogyang-gu Mt. Bukhansan.	Sep. 24	Keijo/Prov. Keiki, Poukhan-san	北漢山
<b>Year 1919</b>				
148	Jellabuk-do, Gwangjugwangyeok-si	Jan. 6	Prov. S. Zenra, Kongju	光州
149	Jeollanam-do, Mokpo-si	Jan. 6	Prov. S. Zenra, Mopho	木浦

Table 2. The following list contains all names originally mentioned by E. H. Wilson in his labels, field notes, and his photographic records. The local names are listed in Alphabetical order by his collection trip. Orthographic error (\*) was indicated here

No.	Romanized name		Chinese characters (Wilson's name)	Latitude	Longitude
	Wilson's name	Current name			
125	Anshu, Prov. N. Heian	Pyeongannam-do, Anju-gun	安州	125°39'38.16"E	39°36'49.97"N
81	Anyo, Mt. Konggosan, Prov. Kogen	Gangwon-do, Hoiyang-gun, Naeguemgang-myeon, Jangyeon-ri, Mt. Geumgangsán, Anyangsa (temple)	安養 (庵)	128° 4'15.34"E	38°37'15.79"N
22	Arthur Port, Manchuria (= N.E. China)	Manchuria (= N.E. China), Arthur Port	旅順	121°15'0.19"E	38°48'0.14"N
98	Baiho-men, Prov. N. Chusei	Chungcheongbuk-do, Danyang-gun, Maepoep	梅浦邑	128°18' 4.71"E	37° 2' 1.49"N
99	Baiho-rei, Prov. N. Chusei	Chungcheongbuk-do, Danyang-gun, Maepoep, Maeporyeong (hill)	梅浦嶺	128°15'15.19"E	37° 5'38.14"N
64	Bambutsusu (= Bambusoso), Mt. Konggosan, Prov. Kogen,	Gangwon-do, Goseong-gun, Oigeumgang-myeon, Mt. Geumgangsán, Manmulsang	萬物相	128° 7' 2.29"E	38°42'29.75"N
72	Biro-ho, Mt. Konggosan, Prov. Kogen	Gangwon-do, Mt. Geumgangsán, Birobong (peak)	昆盧峯	128° 6'18.25"E	38°39'13.25"N
79	Bogun-dai, Mt. Konggosan, Prov. Kogen	Gangwon-do, Hoiyang-gun, Naeguemgang-myeon, Mt. Geumgangsán, Mangundae (peak)	望軍臺	128° 5'28.69"E	38°37'33.29"N
131	Bokuen (waterfall), Prov. Keiki	Gyeonggi-do, Gaeseong-si, Bakyeonpokpo (waterfall)	朴淵 (瀑布)	126°34'23.01"E	38° 5'26.73"N
25	Buroyo-dai, Prov. N. Kankyo	Hamgyeongbuk-do, Buryeong- gun, Mt. Muneongdae	武陵臺	129°42'05.00"E	42°08'04.00"N
128	Chemulpo, Prov. Keiki	Gyeonggi-do, Incheongwanyeok- si, Jemulpo (= Incheon-si)	濟物浦	126°39'42.13"E	37°27' 3.65"N
16	Chikuyo-san, Prov. Keiki	Gyeonggi-do, Pocheon-si, Soheul-eup, Mt. Jugyeopsán	竹葉山	127°10'0.94"E	37°47'0.06"N
120	Chinnampo, Prov. N. Heian	Pyeongannam-do, Jinnampo-si	鎮南浦	125°23'59.08"E	38°43'59.12"N
82, 116, 142, 145	Choan-ji (= Chuan-ji), Mt. Konggosan, Prov. Kogen	Gangwon-do, Hoiyang-gun, Naeguemgang-myeon, Mt. Geumgangsán, Jangansa (temple)	長安寺	128°4'4.36"E	38°36'45.63"N
52	Choshin, Prov. S. Kankyo,	Hamgyeongnam-do, Jangjin-gun, Jangjin-myeon	長津	127°15'33.78"E	40°22'36.28"N
15	Chikusiki-ri, Prov. Keiki	Gyeonggi-do, Pocheon-si, Jukyeop-Soheul-eup, Mt. Jugyeopsán	竹 (葉) - 蘇屹里?	127° 6'58.18"E	37°46'45.35"N
21	Dairen, Manchuria (= N.E. China)	Manchuria (= N.E. China), Dairen	大連	121°34'0.65"E	38°56'0.7"N
5, 9	Do-do, Oo-rong-do (Degelet Island)	Gyeongsangbuk-do, Ulleungdo (island), Do-dong	道洞	130°54'29.35"E	37°28'55.94"N
34	Engan, Prov. N. Kankyo	Hamgyeongbuk-do, Musan-gun, Seoha-myeon, Imgang-dong	臨江	129° 1'12.25"E	42° 5'15.14"N
32	Ensha-men, Prov. N. Kankyo	Hamgyeongbuk-do, Musan-gun, Yeonsa-myeon	延社面	129° 7'36.38"E	42° 3'43.96"N

31	Ensui-do, Prov. N. Kankyo	Hamgyeongbuk-do, Musan-gun, Yeonsang-myeon, Yeonsu-dong	延水洞	129°9'0.97"E	42°4'0.87"N
83	Fukkei, Prov. Kogen	Gangwon-do, Pyeonggang-gun, Pyeonggang-eup, Bokgye-ri	福溪	127°15'20.23"E	38°26'47.07"N
24	Funei, Prov. N. Kankyo	Hamgyeongbuk-do, Buryeong- gun, Buryeong-dong	富寧	129°42'0.79"E	42°3'0.1"N
44	Futempo, Prov. S. Kankyo	Hamgyeongbuk-do, Hyesan-gun, Bocheon-myeon, Bocheonbo (reservoir)	晋天堡	128°17'58.00"E	41°31'09.00"N
76	Futoku-kutsu, Mt. Konggosan, Prov. Kogen	Gangwon-do, Hoiyang-gun, Naeguemgang-myeon, Jangyeon- ri, Mt. Geumgangsán, Bodeokgul (temple)	普德窟	128°4'55.43"E	38°38'8.08"N
62	Gensan, Prov. Kogen	Hamgyeongnam-do, Wonsan-si	元山	127°26'47.12"E	39°8'51.81"N
60	Genson (River), Prov. S. Kankyo	Hamgyeongnam-do, Jeongpyeong- gun, Guemjingang (river)	金津江	127°13'31.34"E	39°55'23.60"N
69, 104	Gyokuryudo, Mt. Konggosan, Prov. Kogen	Gangwon-do, Goseong-gun, Oigeumgang-myeon, Onjeong-ri Okryu-dong	玉流洞	128°8'33.07"E	38°40'20.60"N
80	Hakka-an, Mt. Konggosan, Prov. Kogen	Gangwon-do, Hoiyang-gun, Naeguemgang-myeon, Jangyeon- ri, Mt. Geumgangsán, Baekhwaam (temple)	白華庵	128°3'59.46"E	38°37'34.48"N
129	Haku-san, Prov. Keiki	Gyeonggi-do, Gwacheon-si, Uiwang-si and Seongnam-si, Mt. Cheonggyesan	白山	127°1'0.13"E	37°21'0.11"N
51	Hanbakudo, Prov. S. Kankyo	Pyeonganbuk-do, Uiju-gun, Gwangpyeong-myeon, Panmak-dong	判幕洞	127°19'24.77"E	41°19'41.97"N
100	Heido, Prov. N. Chusei	Chungcheongbuk-do, Jecheon- gun, Baegun-myeon, Pyeong-dong	坪洞	128°1'33.34"E	37°8'23.56"N
68	Hihobo, Mt. Konggosan, Prov. Kogen	Gangwon-do, Goseong-gun, Oigeumgang-myeon, Onjeong-ri, Mt. Geumgangsán, Bibongpokpo (waterfall)	飛鳳瀑	128°8'12.64"E	38°39'55.31"N
3	Hoko, Prov. N. Keshio	Gyeongsangnam-do, Pohang-si	浦項	129°22'0.51"E	36°2'0.98"N
41	Hokudo, Prov. N. Kankyo	Hamgyeongbuk-do, Hyesan-gun, Buk-dong?	北洞?	128°26'46.63"E	41°45'22.44"N
78, 115	Hyokun-ji, Mt. Konggosan, Prov. Kogen	Gangwon-do, Hoiyang-gun, Naeguemgang-myeon, Jangyeon- ri, Mt. Geumgangsán, Pyohunsa (temple)	表訓寺	128°4'0.88"E	38°37'47.58"N
73	Insen-dai, Mt. Konggosan, Prov. Kogen	Gangwon-do, Goseong-gun, Oigeumgang-myeon, Mt. Geumgangsán, Eumseondaek (peak)	隱仙臺	128°9'23.80"E	38°36'46.55"N
30	Jyosohyo, Prov. N. Kankyo	Hangyeonbuk-do, Musan-gun, Jucho	朱草	129°19'16.00"E	42°11'11.00"N
40	Kankyo-ho, Prov. N. Kankyo	Hamgyeongbuk-do, Hyesan-gun, Bocheon-myeon, Mt. Gwaksabong	郭沙峰?	128°29'59.58"E	41°46'21.51"N
63	Kannom-bo, Mt. Konggosan, Prov. Kogen	Gangwon-do, Goseong-gun, Oigeumgang-myeon, Mt. Geumgangsán, Gwameumbong	觀音峯	128°7'5.95"E	38°41'42.63"N
86, 91	Kannon-zi, Querpaert Island	Jejudo (island), Ara-dong, Mt. Hallasan, Gwameumsa (temple)	觀音寺	126°33'27.11"E	33°25'32.71"N
2	Kazan, Prov. Keiki	Gyeonggi-do, Hwaseong-si, Taean- eup, Annyeong-ri, Hwasan	華山	126°59'0.37"E	37°12'0.67"N

102	Keijyo	Seoul	京城	126°58'0.67"E	37°33'0.97"N
101	Keijyo, Botanic Garden	Seoul, Dondaemun-gu, Cheongryangri-dong	清凉里	127°2'35.42"E	37°35'32.97"N
45	Keizanchin, Prov. S. Kankyo	Hamgyeongnam-do, Jangjin-gun, Hyesansin	惠山鎮	128°10'0.07"E	41°23'0.63"N
53	Ketsubusturi, Prov. S. Kankyo	Hamgyeongnam-do, Jangjin-gun, Gyeol-mool-joong	結物中	127°16'42.52"E	40°40'28.83"N
26	Komozan, Prov. N. Kankyo	Hangyeonbuk-do, Mt. Gomusan	古茂山	129°41'46.00"E	42°06'46.00"N
148	Kongju, Prov. S. Zenra	Jellabuk-do, Gwangjugwangyeok-si	光州	126°54'31.72"E	35°9'52.01"N
17	Koryo, Prov. Keiki	Gyeonggi-do, Pocheon-si, Soheul-eup, Gwangeung	光陵	127°10'37.35"E	37°45'7.77"N
48	Koshukoyu, Prov. N. Heian	Pyeongangbuk-do, Huchang-gun, Hujugo-eup	厚州古邑	127°29'58.14"E	41°27'55.60"N
133	Kwachoji, Prov. Keiki	Gyeonggi-do, Gwacheon-si, Gwacheonji (pond)	果川池	127°0'0.76"E	37°25'0.9"N
130	Kwannon, Prov. Keiki	Gyeonggi-do, Gwaneum?	觀音	126°34'21.62"E	38°5'7.18"N
67	Kyuruen-bo, Mt. Konggosan, Prov. Kogen	Gangwon-do, Goseong-gun, Oigeumgang-myeon, Onjeong-ri, Mt. Geumgangsán, Guryongbong (peak)	九龍峯	128°7'50.78"E	38°39'56.95"N
66, 105	Kyuryu= Kyuryoen (= Nine-Dragon Pool) waterfall, Mt. Konggosan, Prov. Kogen	Gangwon-do, Goseong-gun, Oigeumgang-myeon, Onjeong-ri, Mt. Geumgangsán, Guryongpokpo (waterfall)	九龍淵瀑	128°8'7.03"E	38°39'55.87"N
56	Loaling-san, Prov. S. Kankyo/Prov. S. Heian	Hamgyeongnam-do, Jangjin-gun, Mt. Nangrimsan	狼林山	126°57'33.12"E	40°14'58.90"N
13	Ma-bon, Prov. N. Heian	Pyeongangbuk-do, Mt. Mabong	魔峰	125°49'46.15"E	40°6'34.52"N
75, 113, 143	Makaen-an, Mt. Konggosan, Prov. Kogen	Gangwon-do, Hoiyang-gun, Naegeumgang-myeon, Mt. Geumgangsán, Mahayeonam (temple)	摩訶衍庵	128°5'9.98"E	38°38'19.02"N
71, 108, 112	Miroku-ho, Mt. Konggosan, Prov. Kogen	Gangwon-do, Hoiyang-gun, Naegeumgang-myeon, Mt. Gemgangsán, Mireukbong (peak)	彌勒峰	128°7'12.67"E	38°36'26.66"N
124, 136, 140	Mochuri, Prov. N. Heian	Pyeongangbuk-do, Bakcheon-gun, Dongnam-myeon, Maengjung-dong	孟中里	125°35'0.82"E	39°38'0.92"N
149	Mopho, Prov. S. Zenra	Jeollanam-do, Mokpo-si	木浦	126°22'0.33"E	34°47'0.44"N
28	Mozaan, Prov. N. Kankyo	Hamgyeongbuk-do, Musan-gun, Musan-eup	茂山	129°13'0.04"E	42°13'0.39"N
87, 90	Mt. Hallaisan, Querpaert Island	Jejudo (island), Mt. Hallasan	漢拏山	126°31'51.42"E	33°21'42.09"N
96	Mt. Kangakusan, Prov. Keiki	Gyeonggi-do, Gwacheon-si and Anyang-si, Mt. Gwanak-san	冠岳山	126°57'48.72"E	37°26'43.90"N
103, 141	Mt. Konggosan, Prov. Kogen	Gangwon-do, Goseong-gun, Hoiyang-gun and Tongcheon-gun, Mt. Geumgangsán	金剛山	128°12'0.14"E	38°41'0.41"N
119	Mt. Poukhan-san, Prov. Keiki/Keijo	Seoul, Eunpyeong-gu, Jongno-gu, Seoungbuk-gu and Gangbuk-gu / Gyeonggi-do, Goyang-si, Deogyang-gu, Mt. Bukhansan	北漢山	126°58'14.15"E	37°37'54.22"N



1, 84	Nam-san, Seoul (Keijyo)	Seoul, Mt. Namsan	南山	126°59'0.32"E	37°33'0.11"N
49	Nansha, Prov. N. Heian	Pyeonganbuk-do, Uiju-gun, Oksang-myeon, Namsa-dong	南社	127°15'26.40"E	41°16'39.99"N
50	Nanshatongu, Prov. N. Heian	Pyeonganbuk-do, Uiju-gun, Oksang-myeon, Namsa-dong	南社洞口	127°15'26.40"E	41°16'39.99"N
7	Nari-do, Oo-rong-do	Gyeongsangbuk-do, Ulleungdo (island), Nari-dong	羅里洞	130°52'17.51"E	37°31'12.49"N
74	Nemon-rei, Mt. Konggosan, Prov. Kogen	Gangwon-do, Hoiyang-gun Naeguemgang-myeon, Mt. Geumgangsán, Naemujaeryeong (peak)	內霧 (在)嶺	128°7'14.53"E	38°37'31.28"N
65	Onsenri, Mt. Konggosan, Prov. Kogen	Gangwon-do, Goseong-gun, Oigeumgang-myeon, Onjeong-ri	溫井里	128°12'8.60"E	38°41'24.99"N
121	Botan-dai, Pingyang, Prov. N. Heian	Pyeongannam-do, Pyeongyang-si, Mt. Moranbong, Morandae (peak)	牡丹臺	125°45'38.84"E	39°2'47.56"N
122	Dido (river), Pingyang, Prov. N. Heian	Pyeongnanam-do, Daedonggang (river)	大同江	125°45'8.15"E	39°0'5.09"N
123	Pingyang, Prov. N. Heian	Pyeongannam-do, Pyeongyang-si	平壤	125°45'0.21"E	39°1'0.91"N
147	Poukhan-san, Keijo/ Prov. Keiki	Seoul, Eunpyeong-gu, Jongno- gu, Seoungbuk-gu and Gangbuk- gu /Gyeonggi-do, Goyang-si Deogyang-gu Mt. Bukhansan.	北漢山		
135	Kanghwam, Prov. Keiki	Gyeonggi-do, Ganghwado (island)	江華	126°29'5.81"E	37°44'51.53"N
12, 138	Pukchin, Prov. N. Heian	Pyeonganbuk-do, Bukjin-eup	北鎮	125°47'0.47"E	40°9'0.27"N
85	Querpaert Island	Jejudo (island)	濟州道	126°32'20.66"E	33°31'18.66"N
144	Reigan-an, Mt. Konggosan, Prov. Kogen	Gangwon-do, Hoiyang-gun , Naeguemgang-myeon, Jangyeon- ri, Mt. Geumgangsán, Yeongwonam (temple)	靈源庵	128°5'33.86"E	38°36'48.47"N
61	Ryusen, Prov. S. Kankyo	Hamgyeongnam-do, Yeongheung- gun, Deokheung-myeon, Yongcheon-ri	龍川	127°3'59.08"E	39°34'39.49"N
42	Saika-rei, Prov. N. Kankyo/S. Kankyo	Hamgyeongnam-do, Hyesan-gun, Daejin-myeon, Mt. Choigaryeong	崔哥嶺	128°38'24.45"E	41°43'35.86"N
134	Sakdong, Prov. Keiki	Gyeonggi-do, Gwangmyeong-si, Sakgol	沙洞?	126°49'54.90"E	37°27'44.62"N
95	Sansai (Sansei?), Prov. S. Keisho	Gyeongsangnam-do, Sancheong-gun	山清	127°52'24.63"E	35°24'57.53"N
46	Sanshui (= Shanshui), Prov. S. Kankyo	Hamgyeongnam-do, Samsu-gun, Samsu-myeon	三水	128°1'20.30"E	41°17'38.77"N
6	Seijim-bo, Oo-rong- do (Degelet Island)	Gyeongsangbuk-do, Ulleungdo (island), Mt. Seonginbong	聖人峰	130°52'18.02"E	37°30'21.11"N
77	Seiyoji, Mt. Konggosan, Prov. Kogen	Gangwon-do, Hoiyang-gun, Naeguemgang-myeon, Jangyeon- ri, Mt. Geumgangsán, Jeongyangsa (temple)	正陽寺	128°3'47.96"E	38°37'54.16"N
23	Sempo (= Senpo?), Prov. Kogen (→ Prov. S. Kankyo)*	Gangwon-do, Pyeonggang-gun, Gosab-myeon, Sepo-ri	洗浦	127°21'36.39"E	38°38'35.82"N
114	Sen-an, Mt. Konggosan, Prov. Kogen	Gangwon-do, Hoiyang-gun, Naeguemgang-myeon, Jangyeon- ri, Mt. Geumgangsán, Seonam (temple)	船庵	128°4'32.73"E	38°38'41.45"N

110	Sentan (waterfall), Mt. Konggosan, Prov. Kogen	Gangwon-do, Goseong-gun, Seo-myeon, Mt. Geumgangsán, Sibipokpo (waterfall)	十二 (瀑下)	128° 9' 27.62"E	38° 37' 14.53"N
18, 118, 132	Seoul (= Keijo)	Seoul	京城	126° 58' 40.47"E	37° 33' 58.62"N
35	Setsu-rei (Snow Mt.), Prov. N. Kankyo	Hamgyeongbuk-do, Musan-gun, Mt. Seolryeong	雪嶺	129° 10' 0.42"E	41° 41' 0.26"N
57	Shaso, Prov. S. Heian	Pyeongannam-do, Yeongwon-gun, Daeheung-myeon, Sachang-ri	社會	126° 56' 29.36"E	40° 5' 59.84"N
27	Shayu-rei, Prov. N. Kankyo	Hamgyeongbuk-do, Musan-gun and Buryeong-gun, Mt. Chayouryeong	車踰嶺	129° 31' 0.45"E	42° 8' 0.85"N
29	Shayutong, Prov. N. Kankyo	Hamgyeongbuk-do, Dong-myeon, Chayou-dong	車踰洞	129° 32' 15.00"E	42° 09' 29.00"N
126	Shinanshu, Prov. N. Heian	Pyeongannam-do, Anju-gun, Sinanju-myeon	新安州	125° 36' 35.00"E	39° 35' 53.00"N
20, 117, 127	Shingishu, Prov. N. Heian	Pyeonganbuk-do, Sinuiju-si	新義州	124° 24' 11.09"E	40° 5' 51.25"N
106	Shinke-ji, Mt. Konggosan, Prov. Kogen	Gangwon-do, Goseong-gun, Oigeumgang-myeon, Yangjin- ri, Mt. Geumgangsán, Syngyesa (temple)	新溪寺	128° 12' 10.33"E	38° 40' 14.36"N
55	Shinkori (= Shinkari?), Prov. S. Kankyo	Hamgyeongnam-do, Sinheung- gun, Sinheung-myeon	新興	127° 3' 40.54"E	40° 25' 37.39"N
47	Sinkabachin, Prov. S. Kankyo	Hamgyeongnam-do, Samsu-gun, Sinpa-myeon, Singalpa-ri	新架坡嶺	127° 46' 35.55"E	41° 25' 0.75"N
88	Sopoto (=Soputo), Querpaert Island	Jejudo (island), Seoguipo-si	西歸浦	126° 33' 36.40"E	33° 15' 14.80"N
36	Soshyo, Prov. N. Kankyo	Hangyeongbuk-do, Musan-gun,	朱草?	129° 19' 0.26"E	42° 11' 0.18"N
146	Suigen, Prov. Keiki	Gyeonggi-do, Suwon-si	水原	127° 0' 0.66"E	37° 16' 0.69"N
111	Sumi-an, Mt. Konggosan, Prov. Kogen	Gangwon-do, Hoiyang-gun, Naeguemgang-myeon, Jangyeon- ri, Mt. Geumgangsán, Sumoam (temple)	須彌庵	128° 4' 40.40"E	38° 39' 9.90"N
43	Taichinchyo-ri, Prov. S. Kankyo	Hamgyeongnam-do, Daejin- myeon, Daejinpyeong-ri	大鎮坪里	128° 25' 51.35"E	41° 32' 21.94"N
58	Taishuku-ri, Prov. S. Kankyo	Hamgyeongnam-do, Youngheung- gun, Yodeok-myeon, Daesuk-ri	大淑里	126° 50' 17.00"E	39° 48' 01.00"N
10	Taiyudo, Prov. N. Heian	Pyeonganbuk-do, Dongchang-gun, Daeyou-dong	大檢洞	125° 34' 0.99"E	40° 17' 0.98"N
11	Takkol (= Takkori), Prov. N. Heian	Pyeonganbuk-do, Guseong-gun, Cheonma-myeon, Tap-dong	Tapgol	125° 02' 18.00"E	40° 03' 49.00"N
93	Taksan, Mt. Chiri- san, Prov. S. Keisho	Chungcheongbuk-do, Jecheon- gun, Deoksán?	德山	127° 49' 25.04"E	35° 15' 17.26"N
92	Tanjyo, Prov. S. Keisho	Gyeongsangnam-do, Sancheong- gun, Dansung-myeon	丹城	127° 57' 32.81"E	35° 17' 46.36"N
97	Tanyo-gun, Prov. N. Chusei	Chungcheongbuk-do, Danyang- gun	丹陽郡	128° 21' 56.18"E	36° 59' 4.98"N
89	Tenchien (waterfall), Querpaert Island	Jejudo (island), Seoguipo-si Dongheung-dong, Jeongbangpokpo (waterfall)	正房 (瀑布)	126° 34' 17.25"E	33° 14' 41.19"N

94	Tenno-bo (= Tinno-bo), Mt. Chiri-san, Prov. S. Keisho	Gyeongsangnam-do, Sancheong-gun and Hamyang-gun, Macheon-myeon, Mt. Jirisan, Choenwangbong (peak)	天王峰	127°43'50.09"E	35°20'12.16"N
37	Tokuitsudo, Prov. N. Kankyo	Hamgyeongnam-do, Hyesan-gun, Tokripdong	德立洞	128°41'39.12"E	41°46'43.49"N
54	Tokujitsuri, Prov. S. Kankyo	Hamgyeongnam-do, Jangjin-gun, Sangnam-myeon, Deoksil-ri	德實里	127°12'00.00"E	40°44'00.00"N
38	Tumen River, Prov. N. Kankyo	Hamgyeongbuk-do, Dumangang (river)	豆滿江	128°40'42.30"E	41°46'5.02"N
4, 8	Udo, Oo-rong-do (Degelet Island)	Gyeongsangbuk-do, Ulleungdo (island), Jeo-dong	芋洞→芋洞*	130°54'35.84"E	37°29'38.26"N
107	Umikongo, Mt. Konggosan, Prov. Kogen	Gangwon-do, Goseong-gun, Seo-myeon, Mt. Geumgangsán, Haegeumgang	海金剛	128°21'38.71"E	38°41'5.41"N
14, 137, 139	Unsan, Prov. N. Heian	Pyeongangbuk-do, Unsan-gun, Unsan-myeon	雲山	125°53'49.00"E	40°06'39.00"N
19	Yalu River, Prov. N. Heian-S. Heian	Pyeongangbuk-do, Amrokgang (river)	鴨綠江	124°22'40.02"E	40°6'15.39"N
39	Yalu River, Prov. N. Kankyo/S. Kankyo	Pyeongangbuk-do, Amrokgang (river)	鴨綠江	128°35'7.53"E	41°42'38.84"N
59	Yeiko (= Eiko), Prov. S. Kankyo	Hamgyeongnam-do, Youngheung-gun, Yeongheung-eup	永興	126°49'45.85"E	39°36'1.80"N
33	Yuhyo, Prov. N. Kankyo	Hamgyeongbuk-do, Buryeong-gun, Buryeong-myeon , Youpyeong-dong	楡坪	128°49'38.94"E	41°46'35.02"N
70, 109	Yuten-ji (= Yukun-ji), Mt. Konggosan, Prov. Kogen	Gangwon-do, Goseong-gun, Seo-myeon, Mt. Geumgangsán, Yujeomsa (temple)	楡岾寺	128°9'43.65"E	38°35'18.11"N