

A New Species of *Asarum* (Aristolochiaceae) from the Ryukyus, Japan

Eiji YAMAHATA

██████████ Kawachinagano-shi, Osaka, 586 JAPAN

(Received on April 12, 1994)

A new species, *Asarum leucosepalum*, is described from Tokunoshima Island, the Ryukyus, Japan.

Asarum leucosepalum Hatusima ex Yamahata, sp. nov.

Rhizoma abbreviatum repens vel ascendens. Folia 2, sempervirentia, ovato-hastata, 6–12 cm longa et 3–7 cm lata, apice acuto-obtusa, basi profunde cordata, supra sparse hirtella, velutinosa, atro-viridia, albido-maculata, subtus ad costam et nervas curvulato-hirsuta.

Petiolus 5–15 cm longus sparse hirsutus. Flos pedunculatus, pedunculus ca. 10–20 mm longus glaber. Tubus calycis cylindricus ca. 8–12 mm longus 15–20 mm latus, prope ad superum paucè constrictus, extus cinereo-viridescens purpureo-punctatus, intus atropurpureus tessellato-reticulatus, reticulis valde elevatis; limbus 3-sectus, lobis ovato-deltaideis, ca. 7–

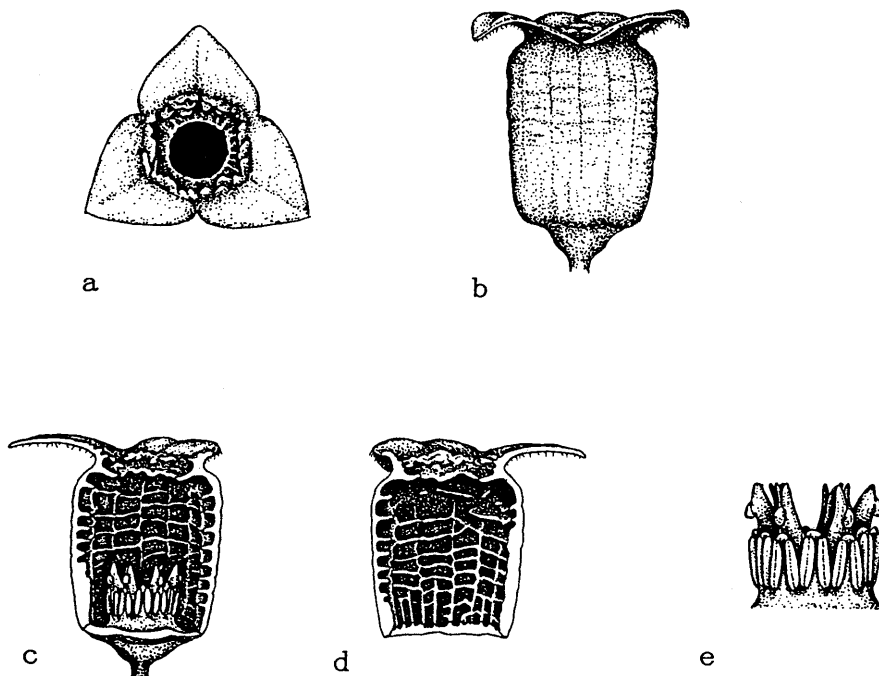


Fig. 1. *Asarum leucosepalum*: a–b two views of flower $\times 2$; c–d inner views of the same $\times 2$; e pistils and stamens $\times 4$.



Fig. 2. *Asarum leucosepalum*.

Table 1. Distinguishing characters of *Asarum* species in Tokunoshima Island

	Upper surface of leaf		Peduncle length (mm)	Calyx lobes		
	Pale green mottles	Laster		Base	Color of inner surface	Hairs of inner surface
<i>A. leucosepalum</i>	With	Velvety	10–20	Flat	White, with red-purple patches at base	Glabrous
<i>A. hatsushimae</i>	Without	Velvety	15–60	Cylindrical	Dull yellow	Thick hairy
<i>A. simile</i>	Without	Velvety	<15	Flat	Dull yellow	Glabrous
<i>A. lutchuense</i>	Without	Metallic	<15	Flat	Dark brown	Thick hairy

11 mm longis 8–12 mm latis, extus flavo-brunneis punctis rubro-purpurascensibus dense vestitis, intus fere glabris, albo-variegatis punctis rubro-purpurascensibus vestitis, basi paucis dilatatis, anuli faucium albidum. Ovarium inferum valde depressum; stylus 6. Stamina 12.

Hab. Ryukyus: Tokunoshima Island: Mt. Sasontsuji, alt. 370m. Apr. 27, 1989. E. Yamahata 1014 (holotype, TNS 602069).

This species is found in elevations between 350 m and 400 m alt. in the northern mountainous region of Tokunoshima Island. *Asarum simile*, *A. hatsushimae*, and *A. lutchuense* are already known from Tokuno-

shima Island and the range of this species is partly overlapping with those of *A. hatsushimae* and *A. lutchuense*.

These four species are distinguished by several characters shown in Table 1.

The species is closely related to *A. hatsushimae* and *A. simile*, but differs in having white flower.

References

- Hatusima S. and Yamahata E. 1988. Illegitimately published taxa of *Asarum* from Japan. *J. Phytogeogr. & Taxon.* **36**: 1–8.
 Yamahata E. 1989. New locality of *Asarum lutchuense*. *J. Phytogeogr. & Taxon.* **37**: 84.

山幡英示: 琉球列島徳之島におけるカンアオイ属の1新種

琉球列島、徳之島において発見したカンアオイ属の新種を記載する。本島にはすでに3種のカンアオイ属の植物が知られているが、本種はいずれの種とも異なっている。その区別点はTab. 1に示した。また近くの奄美大島にも近縁と思われる種はない。なお、和名は、カンアオイ研究家の谷村

忠訓氏に因んで、タニムラアオイとする。

本稿をまとめるにあたっては、初島住彦博士に校閲をいただき、また金井弘夫博士にご助言をいただきました。深謝いたします。現地調査には安江光雄氏の協力をえました。あわせてお礼申し上げます。