

A New Species of *Brookea* (Scrophulariaceae) from Borneo

Takasi YAMAZAKI

Botanical Gardens, Faculty of Science, University of Tokyo
3-7-1 Hakusan, Bunkyo-ku, Tokyo, 112 JAPAN

(Received on December 1, 1993)

A new species of *Brookea*, *B. auriculata* Yamazaki, was reported.

One species of *Brookea* was collected by the members of the Botanical Expedition to East Kalimantan, Indonesia, organized by University of Tokyo and Herbarium Bogoriense in 1990. The genus *Brookea* is endemic to Borneo and has been known only 3 species. In these species leaves have distinct petioles and leaf-blades are acute at base and attenuate into the petiole. The new species has sessile and basally auriculate leaves.

Brookea auriculata Yamazaki, sp. nov.

Frutex, ramulis teretis, pilis brevibus rufescentibus

densissime vestitis. Folia opposita, sessilia, subcoriacea, oblonga, oblongo-ovata vel rhomboideo-oblonga, 5–14 cm longa, 2.5–7 cm lata, apice acuminata, basi auriculata, semi-amplexicaulia, minute dentata, supra scabrida, impresso-reticulata, subtus dense dendromorpho-hirsuta (Fig. 2), costa venisque elevatis; venis 9–12 jugis, parallelis, apice conatis. Racemi terminales, solitarii, 3–12 cm longi, pedunculis pedicellisque dense rufescento-villosis, pedicellis 3–

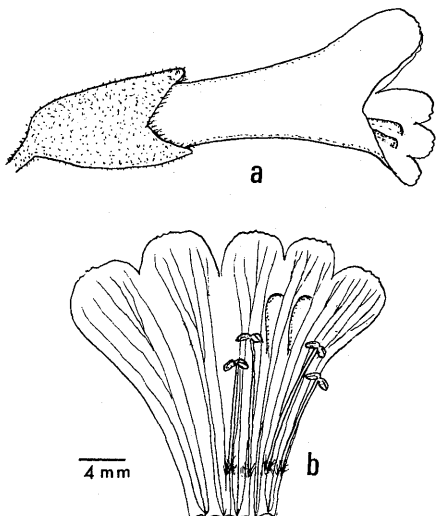


Fig. 1. *Brookea auriculata*. a. Flower. b. Corolla opened.

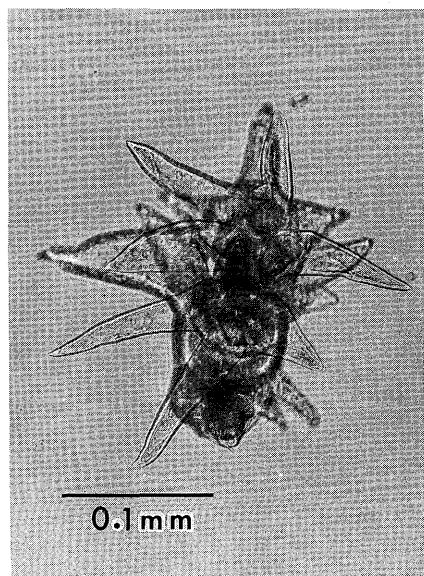


Fig. 2. A dendroid hair on lower surface of leaf.

5 mm longis. Bractee subpersistentes, ovatae, acuminatae, 3–5 mm longae, rufescento-villosae. Flores alterni. Calyx sub anthesi elliptico-tubulosus, ca. 1 cm longus, 0.5 cm latus, bilobatus, lobis deltoidibus, acutis, in fructu ampliatis, ad orem contractus, ca. 1.5 cm longus, 1 cm latus, externe dense dend-

romorpho-villosus, interne dense longe pilosus. Corolla bilabiata, ca. 1.5 cm longa, tubo cylindrico, ca. 1 cm longo, externe glabro; labio superiore bilobulato, ca. 5 mm longo, lobulis orbiculatis ca. 3 mm longis et latis, margime leviter denticulatis; labio inferiore dilatato, ca. 5 mm longo, fauce interne bi-gibboso, 3-

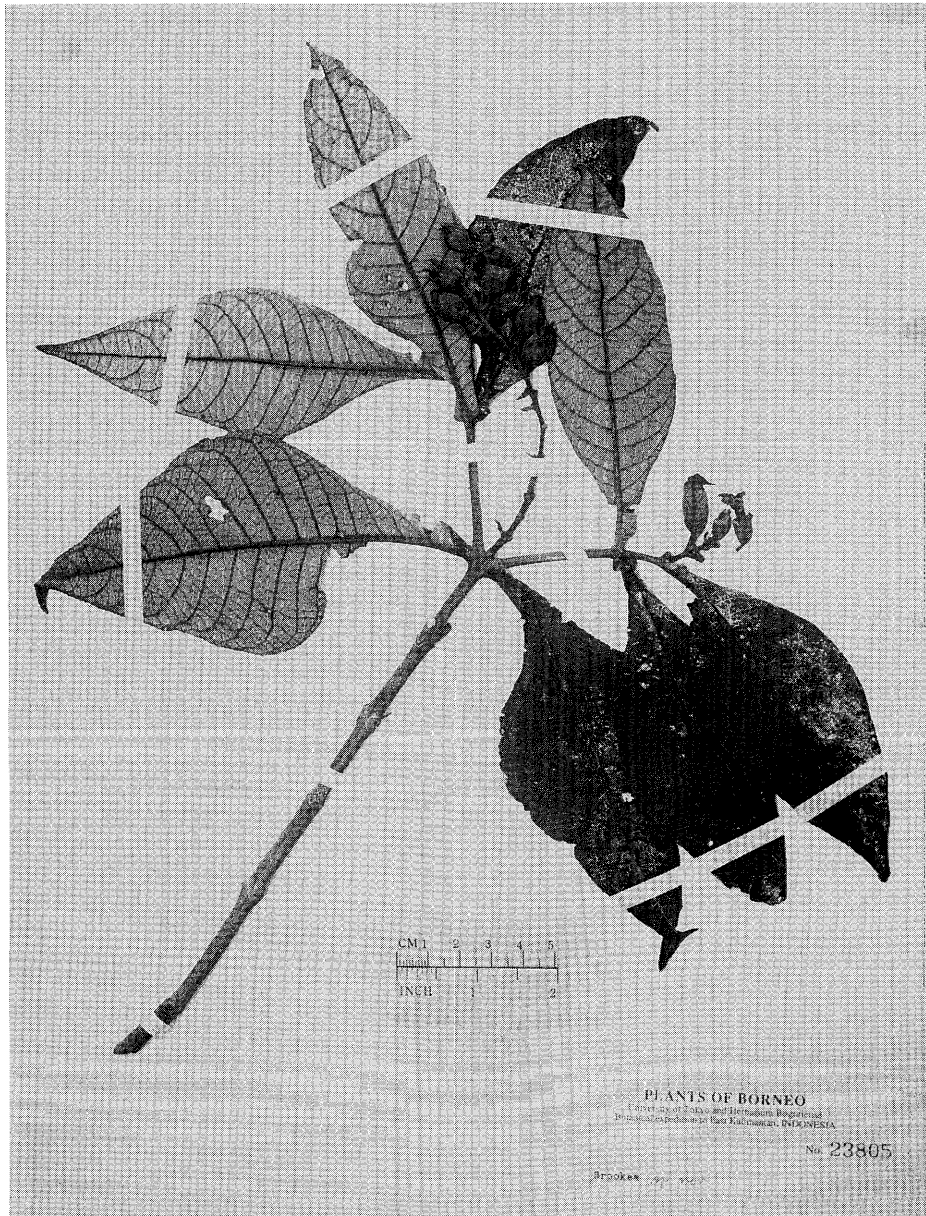


Fig. 3. *Brookea auriculata* Yamazaki. Type.

lobulato, lobulis orbiculatis circ. 3 mm longis et latis, margine leviter denticulatis, lobulo medio leviter minore. Stamina 4, inclusa, didinama, filamentis basi pilosis. Ovarium ovoideum glabrum. Stylus filiformis ca. 5 mm longus, glaber, apice leviter dilatatus, oblique stigmatosus. Capsula ovoidea, calyce inclusa, ca. 10 mm longa, 0.5 mm lata, glabra, stylo persistente.

山崎 敬：ボルネオからの *Brookea* (ゴマノハグサ科) の 1 新種

ボルネオから採集されたゴマノハグサ科の *Brookea* 属の新種を報告する。*Brookea* はボルネオにのみ知られる属で、今までに 3 種類知られているが、此等はみな明らかな葉柄を持ち、葉身の

Semina numerosa, subglobosa, ca. 0.6 mm longa, 0.5 mm lata, testa reticulata.

Hab. Borneo: E. Kalimantan, Bulungan, Long Bawan, Gunung Paris, 1000–1100 m (Kato, Okada, Murata & Darnaedi, Sept. 13, 1990, no. 23805, Typus TI).

基部は鋭形で葉柄に流れるが、今回採集された種類は無柄で、基部は耳形であり、他とは全く異なる。葉の裏面や花序の樹枝状の毛を持つのも特徴と考えられる。