

## A New Species of *Limonium* from Ryukyu

Takasi YAMAZAKI

Botanical Gardens, Faculty of Science, University of Tokyo,  
3-7-1, Hakusan, Bunkyo-ku, Tokyo, 112 JAPAN

琉球からのイソマツ属の1新種

山崎 敬

東京大学理学部附属植物園 112 東京都文京区白山3-7-1

(Received on December 1, 1990)

A new species of *Limonium senkakuense* Yamazaki is reported from Uotsurijima, Senkaku Islands, Ryukyu. This species is situated between *L. sinense* (Girard) O. Kuntze and *L. tetragonum* (Thunb.) Bullock.

A plant of *Limonium* has been collected from Uotsurijima, Senkaku Islands, Ryukyu. This plant was determined as *L. sinense* (Girard) O. Kuntze by Hatusima, however, differs from the latter by the spiked-paniculate scapes and the tubular calyx with short cuspidate 5 lobes (Fig. 2, a). *Limonium sinense* has the corymbose-paniculate scapes and the salver-shaped calyx with acute 5 lobes (Fig. 2, c). The plant of Senkaku Islands more resembles in appearance *L. tetragonum* (Thunb.) Bullock, but the latter is characterized by the tubular-funnelform calyx with hirsute hairs throughout on the ridges of calyx-tube and the ovate acute entire calyx-lobes (Fig. 2, b). Thus, the plant of Senkaku Islands is in an intermediate position between *L. sinense* and *L. tetragonum*, and should be treated as a distinct species.

***Limonium senkakuense* Yamazaki, sp. nov.**  
(Fig. 1 and Fig. 2-a.)

*Limonium sinense* sensu Hatusima, Fl.

Ryukyus 472 (1971), pro parte.

Herba biennis. Radix crassa, simplex, lignosa, apice petioles emortuus fibrosis multis tecta. Folia carnosae, omnino radicalia, rosulata, spatulata, apice rotundata breviter apiculata, basi sensim petiolum attenuata, cum petiolo 5–9 cm longa, 1.5–2 cm lata, utrinque glabra, subtus elevate uncostata et 2–3-jugo nervata. Caulis solitarius elatus, efoliosus, superne multi-ramosus, 30–40 cm altus, basi 3–4 mm in diametro, inferne obsolete superne conspicue quadrangulus, glaber, ramis basi squamosis. Squamae anguste triangulatae coriaceae, attenuato-acuminatae, inferne ca. 5 mm longae, sursum gradatim minora, superne ca. 3 mm longae, anguste scarioso-marginatae. Inflorescentiae ad apicem ramurolum spicatae, 1–2 cm longae, 0.4 mm latae, multiflorae. Involucra squamiformia, coriacea, ca. 2 mm longa. Spiculae congestae, semper uniflorae. Bractae spicularum 2, glabrae, externis late ovatis obtusis, scariosis, membranaceis, ca. 2 mm longis, internis chartaceis,

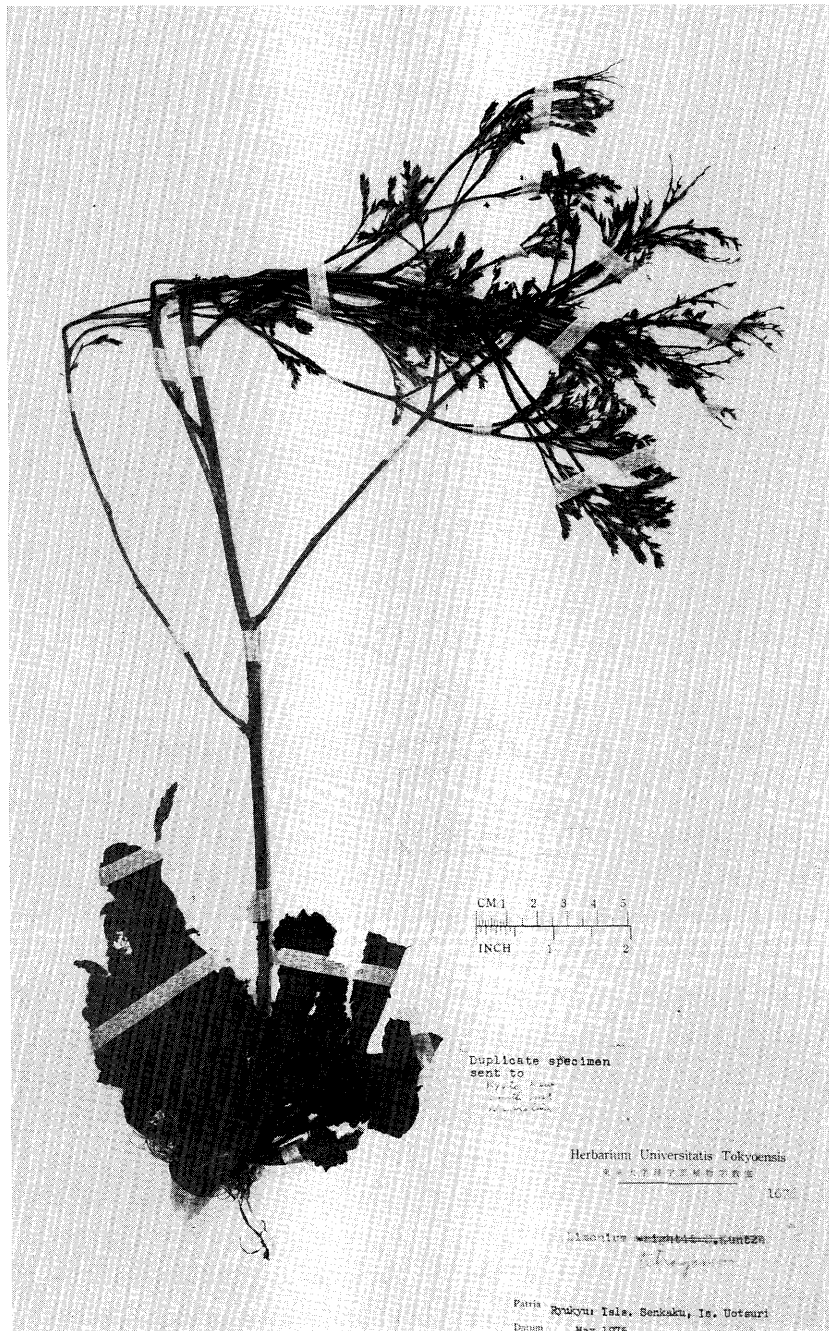


Fig. 1. *Limonium senkakuense* Yamazaki. Type.

elliptico-ovatis, ca. 5 mm longis 3 mm latis, unicastis, apice cuspidatis, late scarioso-marginatis. Bractea flonis nulla. Flores sessiles. Calyx tubulosus, ca. 5 mm longus, 1 mm latus, 5-carinato-nervosus, in parte inferiore ad nervos

hirsutus; limbus corollaceus, albus, ca. 1.5 mm longus, non expansus, 5-costatus, leviter 5-lobatus, lobis late deltoidibus ca. 0.7 mm longis, cuspidatis, margine denticulatis. Corolla tubiformis, calyce leviter longiora, ca. 6 mm longa, 5-lobata, lobis

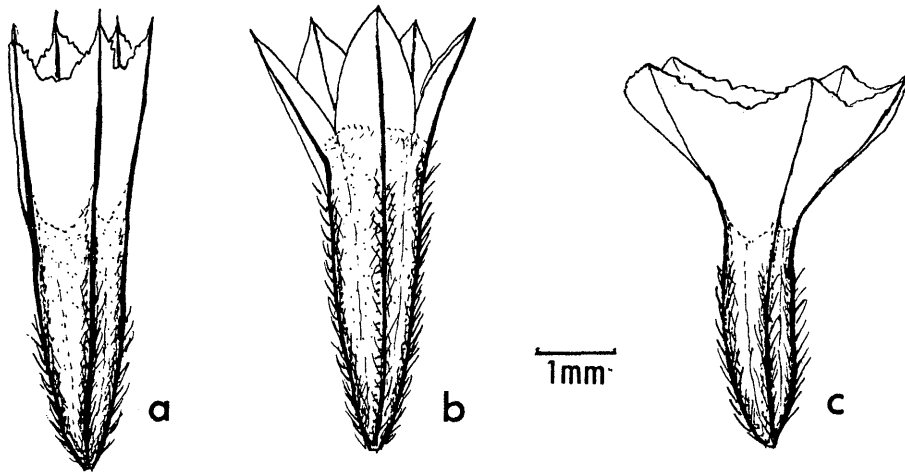


Fig. 2. Calyces of *Limonium* spp. a. *L. senkakuense* Yamazaki, Type. b. *L. tetragonum* (Thunb.) Bullock. Hyogo Pref., Himejishi, Fukudomari, M. Togashi, no. 10147. TI. c. *L. sinense* (Girard) O. Kuntze. Ryukyu, Iriomote, Is. Nakanougan, Tawada, no. 969. TNS.

ovatis rotundatis. Stamina 5, ca. 2 mm longa, filamentis brevibus, tubo corollae affixis, glabris. Antherae ellipsoideae, obtusae, ca. 1 mm longae. Ovarium oblongo-lanceolatum, 5-costatum, glabrum. Styli 5, e basi discreti, filiformes, ca. 5 mm longi. Fructus ignotus.

Hab. Ryukyu. Senkaku Islands, Uotsurijima (Amano, April 18, 1975, no. 8633, TI, KYO, TNS; Miyagi et Hatusima, April 1975, no. 40074, Herb. Ryukyu Univ.; Amano et Takushi, May 1975, no. 1676, Typus, TI. Isotypus, K, KYO, NCV, US).

### 要 旨

琉球の尖閣群島にハマサジの仲間があることは、1952年に多和田真淳氏が同島で採集されて以来知られている。初島氏はこの植物を西表の中之御神島のものと共に台湾ハマサジ *Limonium*

*sinense* (Girard) O. Kuntzeとして扱い（沖縄植物目録：80, 1958）、現在でもそれが踏襲されている。台湾ハマサジは花序の花は密生して集散状であり、萼は高杯状であるが、尖閣群島のは花序の花は穂状につき、萼は筒状なので異なる。この性質はむしろ本州、四国、九州に分布するハマサジ *L. tetragonum* (Thunb.) Bullockに類似する。しかしハマサジの萼はやや漏斗状で、萼筒の稜上の全体に毛がはえ、萼はより深く5裂し、裂片は全縁なので異なる。尖閣群島固有の独立した種類と考えられる。これを新種としてセンカクハマサジと名付ける。台湾ハマサジとハマサジを結ぶ両者の中間の位置にある。台湾ハマサジは中国大陸の中部南部、台湾に広く分布するけれど、日本では琉球の西表島の離島である中之御神島に知られるのみである。