

Hideaki OHBA*: **A systematic revision of the genus *Cardiandra***
(Saxifragaceae-Hydrangeoideae) (2).*****

大場秀章*: クサアジサイ属の分類 (2)

Taxonomic treatment

Cardiandra Sieb. et Zucc., Fl. Jap. 1: 119 (1839)—Hook. f. in Benth. et Hook. f., Gen. Pl. 1: 643 (1865)—Maxim. in Mém. Acad. Sci. St.-Pétersb. 10(16) [Rev. Hydrang.]: 5 (1867)—Hutchinson in Kew Bull. 1927: 106 (1927)—Engl., Nat. Pfl.-fam. 2 Aufl. 18a: 200 (1930). [Fig. 9]

Rhizomatous perennial herb, containing needle-shaped crystals in cells throughout. (Aerial) stems annual, arising from the axils on the former years' leaves. Leaves alternate, simple, exstipulate. Inflorescences corymbose, terminal or terminal and lateral, with or without ornamental flowers. Flowers hermaphrodite, usually 5-merous, pedicellate. Calyx-tube fused with ovaries and forming a flower-tube. Petals free, imbricate. Androecia many (usually three or four times as the same as the petals), inserted on the rim of the flower-tube, filaments erect, anthers basifixed, obcordate, with four thecae, the connective massively expanded. Gynoecia semi-inferior, incompletely trilobulate, styles 3 (2), the stigma oblique, papillate, the placenta central. Ovules orthotropus, 18-40. Fruits a capsule, dehiscing between the persistent styles, polyspermatous. Seeds small, \pm alata, albumen present. The basic chromosome number 15.

Type species: *C. alternifolia* Sieb. et Zucc.

Key to species

- Ornamental flowers with 2-3(-5) petaloid calyx-lobes; length of styles less than 1.2 mm *C. alternifolia* (p. 163)
 Ornamental flowers absent; length of styles 1.5-1.7 mm
 *C. amamiohsimensis* (p. 163)

* Department of Botany, University Museum, University of Tokyo, Hongo 7-3-1, Tokyo, 113.
 東京大学 総合研究資料館植物部門.

** Continued from J. Jap. Bot. 60: 139-147, 1985.

*** This study was supported by Grant-in-Aid for Co-operative Research No. 58340039 in 1984 from the Ministry of Education, Science and Culture, Japan.

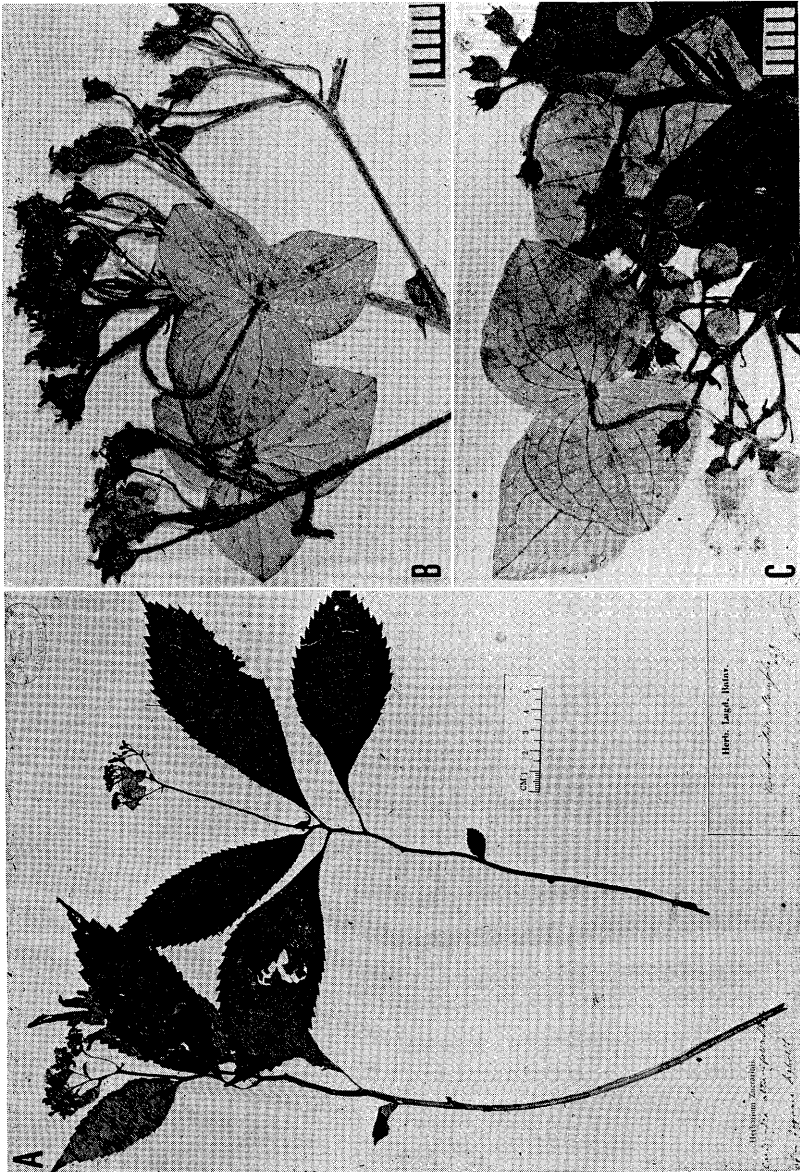


Fig. 6. *Cardiandra alternifolia*. A & B: Subsp. *alternifolia*, Siebold s.n. (A). C: Subsp. *Moellendorffii*, Chung 83587, upper part.

Cardiandra amamiohsimensis Koidz., Pl. Nov. Amami-Ohsim. 10 (1928); in Act. Phytotax. Geobot. 1: 169 (1932)—Makino et Nemoto, Fl. Jap. ed. 2, 428 (1931)—Nemoto, Fl. Jap. Suppl. 283 (1936)—Masamune in Sci. Rep. Kanazawa Univ. 3(1): 105, f. 1 (1955)—Hatusima in Hatusima et Nackejima, Fl. Ryukyu Isl. 216, f. 112 (1979), excl. pl. ex Iriomote et excl. distr. Taiwan et China austr.—H. Ohba in Satake et al., Wild Fl. Jap. Herb. 2: 156 (1982). Types: [Japan] Loochoo (=Ryukyu). Insula Amamiohsima, ad Nase (S. Kawagoe s.n.); ibid. (T. Mayeda s.n.); inter Kawauchi et Onkachi (Y. Hosoyamada s.n.); Tatsugoh (H. Ohba s.n.), all not available in KYO. [Fig. 8, lower]

C. alternifolia var. *amamiohsimensis* (Koidz.) Masamune in Hokuriku J. Geobot. 5: 8 (1956), ut '*amamiohsimensis*'.

Stems 30–60 cm long, sparsely pilose. Leaves herbaceous, petiolate, petioles 2–9 cm long, glabrous; lamina oblanceolate-broadly oblanceolate, (7–)12–23 cm long, (2.6–)4–6 cm wide, acuminate, long-attenuate or attenuate at base, distinctly serrate, dark green (often with reddish shade) and sparsely pilose above, pale and glabrous (except on veins) beneath, the midrib and veins inconspicuous on both surfaces, the lateral veins 7–10 per side. Inflorescence a terminal corymb, up to 15–17 cm long and 10 cm wide, ornamental flowers absent, main axes and peduncles moderately to densely pilose, pedicels glabrous, 3–5 mm long at anthesis. Calyx glabrous, lobes broadly triangular ovate. Petals rose, oblong-ovate-broadly ovate-orbicular, 3–4 mm long, 2–3 mm wide, round or obtuse at apex. Stamina numerous (usually 17–23), filaments 2.3–3 mm long, anthers oblong and deep red before dehiscence. Styles 1.5–1.7 mm long.

Distr. Endemic to Amami-ohshima Island (Kagoshima Pref.). On shady, moist, rocky stream side banks.

Specimens examined. JAPAN. Kagoshima Pref., Amami-ohshima Isl.: Nase (Fukasawa Aug. 30, 1904, MAK); Tatsugo (Unknown coll. 239, MAK); Kawauchi—Onkachi (Hosoyamada Jul. 29, 1927, KAG—Isosyntype?); Sumiyoh-son, Sumiyoh-river, alt. ca 130 m (Sato 4055, KAG, TNS); near Nishinakama electric power house station, alt. 50 m (Hatusima 20013, KAG).

Cardiandra alternifolia Sieb. et Zucc., Fl. Jap. 1: t. 65 (1839), 121, t. 66 (1840, versim.)—Miq., Prol. Fl. Jap. 263 (1867)—Maxim. in Mém. Acad. Sci. St.-Pétersb. 10(16): 5 (1867)—Franch. et Sav., Enum. Pl. Jap. 1: 157 (1873)—Matsum., Ind. Pl. Jap. 2: 172 (1912)—Makino et Nemoto, Fl. Jap. ed. 2, 427 (1931)—Maekawa in J. Jap. Bot. 25: 158 (1950)—Ohwi, Fl. Jap. 610 (1953);

Engl. ed. 510 (1965); new ed. 713 (1975)—Kanai, Distr. Map. Fl. Pl. Jap. Fasc. 1, Map 18 (1958)—Kitamura et Murata, Col. Ill. Herb. Pl. Jap. Choripet. 138, pl. 33 (279) (1961)—H. Ohba in Satake et al., Wild Fl. Jap. Herb. 2: 156, Pl. 146(3) (1982). Type: [Japan] Japonia (Siebold s.n., L), not seen.

Key to the subspecies and varieties

1. Petaloid calyx-lobes 3 (rarely 4 or 5); length of styles 0.7-1 (rarely 1.2) mm
 subsp. *alternifolia*
 Petaloid calyx-lobes 2 (very rarely 3); length of styles 1-1.2 mm
 subsp. *Moellendorffii* 2
2. Leaves broadly oblong-broadly elliptic, acute (rarely acuminate) at apex,
 cuneate at base; petals orbicular or broadly obovate var. *Moellendorffii*
 Leaves oblanceolate-narrowly oblong-ovate, long acuminate at apex, long
 attenuate at base; petals oblong or obovate var. *binata*

subsp. ***alternifolia***.

[Fig. 6 A, B]

Hydrangea alternifolia Sieb. in Nova Act. Acad. Leopold.-Carol. 14 [Syn. Hydrang. Jap.]: 692 (1829)—Ser. in DC., Prodr. 4: 666 (1830). Type: ? Japonia (Siebold s.n., L), not seen.

C. alternifolia f. *ramosa* Hayashi in Bull. Gov. For. Exp. Stat. No. 125, 75, pl. 6(3) (1960). Type: [Japan] Hondo, Prov. Kozuke, Kusaki (Y. Hayashi s.n. Aug. 6, 1958, Herb. Gov. For. Exp. Stat.).

[Description necessary to be emended for that given by Siebold & Zuccarini]¹⁾: Stems 20-100 cm long. Leaves oblanceolate-narrowly elliptic-narrowly oblong-ovate, 10-32 cm long, (2.7-)3.8-7.9 cm wide. Calyx-lobes triangular-ovate-broadly oblong-ovate-transversely oblong. Petals white, often with pinkish shade, imbricate, oblong to broadly oblanceolate, 3.2-3.8 mm long, 2-2.5 mm wide. Stamens (15-)17-20, 2.7-3.5 mm long, anthers ca 0.8 mm wide at the apex, deep yellow before dehiscence. Styles 0.7-1(-1.2) mm long. Ovules 18-20, 0.5-0.6 mm long. Chromosome number $2n=30$.

Distr. Honshu (north to Niigata Pref. on the Japan-Sea side and Miyagi Pref. on the Pacific side), Shikoku, and Kyushu (south to Osumi Peninsula).

Selected specimens examined. JAPONIA (Siebold s.n., A, T1). HONSHU. Miyagi Pref., Watari (Saito Jul. 29, 1966, TUSG). Fukushima Pref., Aidzu (Matsu-

¹⁾ Full description in Japanese was given in Ohba (1982).

mura Aug. 8, 1879, TI); Yumata Onsen (Tobita 1, TI); Mt. Akaidake, N. slope (Hara May 19, 1958, TI); Kasi, Kasionsen (Sohma Aug. 9, 1961, TUSG). Tochigi Pref., Nasu, Oiwakura (Hara Aug. 31, 1957, TI); Nikko (Bisset 4240, BM, E); Nikko, Hangakimen (Jo Aug. 3, 1901, TI); Nikko, Jakkonotaki (Ohba & Akiyama 1367, TI, Voucher of chromosome number $2n=30$). Gunma Pref., Ikaō (Bisset 3285, BM, E); Mt. Tanigawadake, Nishikurosawa (Ono Jul. 4, 1948, TI); Shimizutouge (Togashi 927, TI). Saitama Pref., Mt. Bukozan (Saito & Yashima Aug. 12, 1971, TUSG). Tokyo Pref., Mt. Takamizusan (Watari Aug. 10, 1938, TI); Mt. Kawanoriyama (Hisauchi 1934, TI); Izu Is., Mikurajima (Ohba 677013, TI). Kanagawa Pref., Yokohama, cult. (Maximowicz in 1862, BM, K); Mt. Tanzawa (Sawada 2116, TI); Hakone, Hutagoyama (Sawada Aug. 28, 1927, TI). Chiba Pref., Mt. Kiyosumi (Tuyama & Takahisa Nov. 9, 1968, TI). Yamanashi Pref., Nishiyatsushiro-gun, SW of Mt. Kenashiyama, alt. 1500 m (Kadota 2597, TI, KYO). Niigata Pref., Higashikanbara-gun, Tsugawa (Yamazaki Aug. 24, 1946, TI); loc. cit., Hutagawa-mura (Ito Aug. 1941, TNS). Toyama Pref., Mt. Tateyama (Faurie Aug. 1913, KYO; Matsumura Jul. 23, 1884, TI). Ishikawa Pref., Hakui-gun, Tsurugiji (Satomi Aug. 8, 1963, TI). Shizuoka Pref., Mt. Ashitaka, Sutugawa, alt. 400 m (Kanai 6416, TI); Mt. Akibayama (Momiya 968, TI); Haibara-gun, Mt. Hakkosan, alt. 300–500 m (Ohba 3524, TI). Nagano Pref., Karuizawa, Tsurudamari (Sato Aug. 1, 1954, TI); Nishi-chikuma-gun, Yamaguchi-mura (Sugimoto Aug. 20, 1961, KAG). Gifu Pref., Ena-gun, Kashibo-mura, Kisogoetouge, alt. 900 m (Kanai Jun. 14, 1958, TI). Aichi Pref., Kitashidara-gun, Shidara-machi, alt. 800 m (Murata 4119, TI). Fukui Pref., Kariomiike—Mt. Sannomine on Mts. Hakusan (Fukuoka & Inamasu 523, KYO). Mie Pref., Komono, Mt. Kamagatake (Kurosawa Sep. 6, 1953, TI). Wakayama Pref., Arita, Yawata (Okamoto 8381, TI). Shiga Pref., Mt. Hieizan (Tagawa 189, KYO, TI). Kyoto Pref., Ashiu (Nakai Jul. 16, 1940, TI); Otokuni-gun, near Konzouji (Yamamoto 163, TI). Osaka Pref., Kawati, Mt. Kongousan (Togasi 59835, TI). Hyogo Pref., Siso-gun, Okutanimura, Onzui National Forest (Tagawa 3974, KYO, TI). Okayama Pref., Kawakami-gun, Takayama-mura (Yoshino Oct. 10, 1909, TI). Hiroshima Pref., Sandankyou (Kanai Oct. 15, 1955, TI). Tottori Pref., Mt. Daisen (Furumi Jul. 29, 1925, TI). Shimane Pref., Itiki-mura, Asayama (Kanai Oct. 11, 1958, TI). Yamaguchi Pref., Jakuchisan, alt. 1000 m (Hara & Kurosawa Oct. 5, 1979, TI). SHIKOKU. Tokushima Pref., Kaihu-gun, Nakakitou-mura (Nikai 1542, TI). Kouchi Pref., Nagaoka-gun, Mt. Kajigamori, alt. 1000 m (Murata 18674, KYO). Ehime Pref., Uwajima,

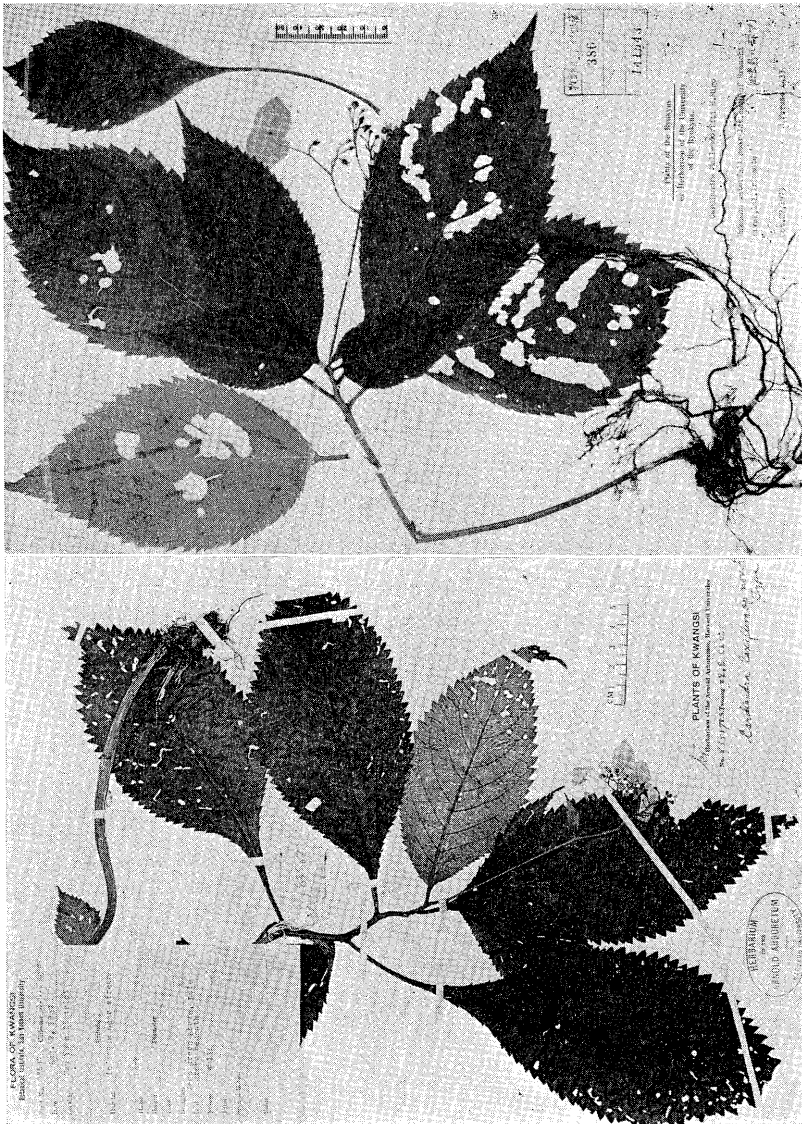


Fig. 7. *Cardiandra alternifolia* subsp. *Moellendorffii*. Upper: Furuse 4433.
 Lower: Chung 83587, type of *C. laxiflora* Li.

Onigajyouyama (Shibuya Aug. 5, 1958, τ_1). KYUSHU. Oita Pref., Mt. Kuju, alt. 1300 m (Sako 2723, KAG). Saga Pref., Mt. Tara-dake, alt. ca 500 m (Tagawa & Iwatsuki 3932, KYO). Nagasaki Pref., in monte Tara (Maximowicz in 1862, K); loc. cit. principatus Oomura (Maximowicz in 1862, BM); Mt. Taradake (Hara Oct. 19, 1941, τ_1). Kumamoto Pref., Mt. Aso (Yabe Aug. 28, 1901, τ_1); Gokansyou, Kureko, alt. 800 m (Sako 1307, KAG). Miyazaki Pref., Iwato (Momiyama Oct. 8, 1958, τ_1); Mt. Wanitsukayama, alt. 800–1000 m (Murata & Murakami 11883, τ_1). Kagoshima Pref., Oguchi, Manedaira (Muramatsu Sep. 20, 1936, τ_1); Aira-gun, Mt. Nagaoyama (Hatusima 29878, KAG); Kimotuki-gun, Uchinouramura (Hurusawa Aug. 3, 1946, τ_1).

f. **formosa** Honda, Pl. Jap. ed. emend. 375 (1975). Type: [Japan] Shikoku, prov. Iyo, Nakahagi (K. Ochi 12, anno 1942, τ_1).

Inflorescences mostly consisting of ornamental flowers.

f. **mirabilis** (Takeda) Sugimoto [Key Herb. Pl. Jap. Dicot. 733 (1965)—H. Ohba in Satake et al., Wild Fl. Jap. Herb. 2: 156 (1982), comb. nud.], stat. nov.

C. alternifolia var. *mirabilis* Takeda in Bot. Mag. Tokyo 24: 65 (1910). Type: [Japan] Nippon, prov. Shinano, in sylvaticis ad pedem montis Shirouma (Y. Numajiri Aug. 15, 1909, τ_1).

Petaloid calyx-lobes 4 or 5, up to 2 cm long.

f. **multiplex** Hayashi in J. Geobot. (Kanazawa) 22: 4 (1974). Type: [Japan] Hondo, prov. Musashi, Mt. Kagenobu (Y. Hayashi Aug. 30, 1973, Herb. Tokyo Univ. Agr.).

Petaloid calyx-lobes double in ornamental flowers.

f. **oppositifolia** (Honda) F. Maekawa in J. Jap. Bot. 25: 158 (1950), ut 'form. dev. *oppositifolia* (Honda)'.
C. alternifolia var. *oppositifolia* Honda in Bot. Mag. Tokyo 44: 318 (1930).

Type: [Japan] Hondo, prov. Shinano, in monte Tateshina (K. Oi 72, anno 1926, τ_1).

Leaves opposite throughout the stem.

subsp. **Moellendorffii** (Hance) Hara et H. Ohba, stat. nov. [Fig. 6C; 7]
 var. **Moellendorffii**.

Hydrangea Moellendorffii Hance in J. Bot. 12: 177 (1874). Type: [China] Kiangsi, near Kiukiang (Moellendorff s. n. in 1860 in Herb. Hance 18601, BM).

Cardiandra alternifolia (non Sieb. et Zucc.) sensu Franch., Pl. David. 1: 126 (1884)—Hemsl. in J. Linn. Soc. Bot. 23: 278 (1887).

C. sinensis Hemsl. in Gard. Chron. 3rd Ser. 33: 82 (1903)—Rehder in Sargent,

Pl. Wilson. 1: 24 (1913)—Chien in Contr. Biol. Lab. Soc. China 3: 47 (1927). Types: [China] Chekiang, Ningpo Mountains (E. Faber no. 1381 in 1888, κ); Western Hupeh (E. H. Wilson 2426 in 1907, κ).

C. alternifolia var. *Moellendorffii* (Hance) Engler, Nat. Pfl.-fam. 2 Aufl. 18a: 201 (1930), ut '*Moellendorffii*'—Hand.-Mzt., Sym. Sin. 7: 441 (1931)—Tsoong in Contr. Inst. Bot. Nat. Acad. Peiping 4: 105 (1936).

C. Moellendorffii (Hance) Migo in J. Jap. Bot. 18: 419 (1942)—Li in J. Arn. Arb. 26: 61 (1945), in nota—Chun in Act. Phytotax. Sin. 3: 108, t. 4 (1954)—Chen et al., Observ. Fl. Hwangshanica 122 (1965)—Inst. Acad. Sin., Icon. Cormophyt. Sin. 2: 112, f. 1953 (1972)—Hatusima et Amano, Fl. Ryukyu 51 (1977), ut '*mollendorffii*'—H. Ohba in Satake et al., Wild Fl. Jap. Herb. 2: 156 (1982).

C. laxiflora Li in J. Arn. Arb. 26: 61 (1945). Type: [China] Kwangsi, Tzu-yuen District (Z. S. Chung 83587, Δ).

Stems 40–60 cm long, nearly glabrous. Leaves petiolate, petioles 1.5–4.5 cm long; lamina herbaceous or membranaceous, pilose above, except on veins glabrous beneath. Inflorescences corymbose, terminal or terminal and lateral, up to 15–20 cm long. Ornamental flowers with 2 (very rarely 3) petaloid calyx-lobes, scattered. Calyx-lobes semiorbicular. Styles 1–1.2 mm long.

Distr. Continental China and the Ryukyu Islands (Iriomote).

Specimens examined. CHINA. Kweichow: Tuyun, alt. 750 m (Tsiang 3812, PE). W. Hupeh: sine loc. specialit. (Wilson 2426, κ, E). Kiansi: In collibus circa Kiukiang (Moellendorff s. n. in 1873, BM); in monte Hangaodsu inter Ningdu et Tjingan (Wang ex Hand.-Mzt. 494, E); Kiukiang (Hemsley in Jul. 1874, κ, BM); Lushan (Schindler 326, BM, E); Kuling, alt. 4000 ft. (Wilson 1545, BM); loc. cit. (Liu s. n., KYO). Chekiang: Ningpo Mts. (Faber 138, κ); Tien Mu Shan (Ching 5033, κ; 5023, E); ibid. (Chien 433, κ); Tien Tai Shan, alt. 3000 ft. (Chiao 14363, E). Anhwei: Wu-yuan (Ching 8884, κ); Chiu Hwa Shan, alt. 600 m (Fan & Li 165, κ); Huang Shan, Yungusi (Zhou 419, PE). Fukien: Liencheng (Lin 4175, PE). Kiangsu: Nanching, Sun Yat Sen Bot. Gard. (Coll. unknown s. n., PE). JAPAN. RYUKYU ISLANDS. Iriomote Isl.: Komidake, alt. 400 m. (Yamazaki Jun. 17, 1971, TI); unknown waterfall near 1st camp of Urauchi river (Furuse 4433, MAK).

var. **binata** F. Maekawa in J. Jap. Bot. 25: 158 (1950), in adnota—Shimizu in *Taiwania* 9: 193 (1962). [Fig. 8, upper]

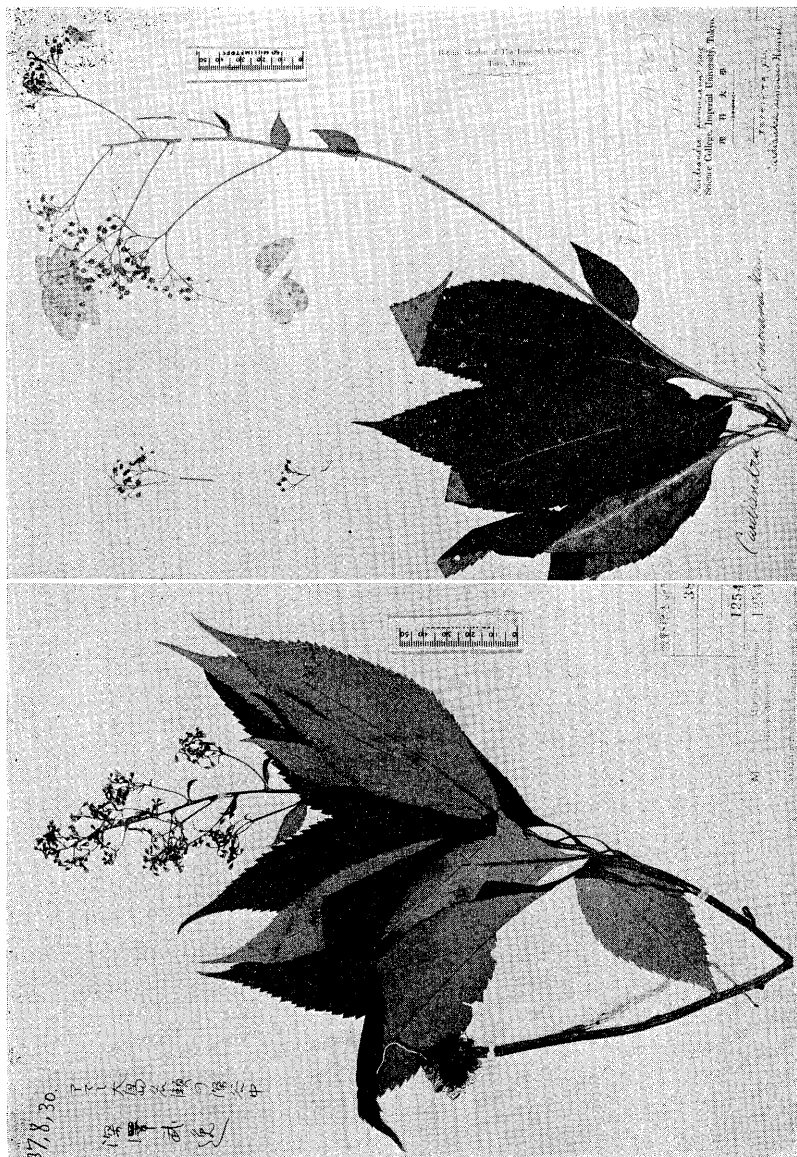


Fig. 8. *Cardiandra alternifolia* var. *binata* (upper) and *C. amamiohsimensis* (lower).
Upper: Nagasawa 714, type of *C. formosana* Hayata. Lower: Fukasawa s.n.

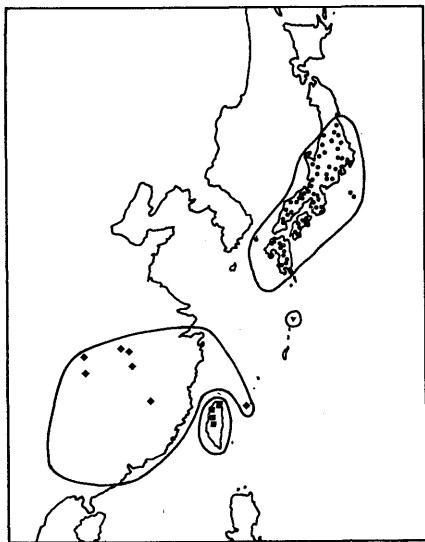


Fig. 9. Distribution map of *Cardiantdra*. *C. amamihoimensis* (▼), *C. alternifolia* subsp. *alternifolia* (●), subsp. *Moellendorffii* var. *Moellendorffii* (◆) and var. *binata* (■).

25(19) : 92 (1908).

Distr. Endemic to Taiwan.

Specimens examined. TAIWAN: loc. sine specialit. (Unknown coll. 114; Unknown coll. s. n. 11); Bunkiko, alt. 1500 m (Faurie 1341, BM); Keitao, alt. 1333 m (Wilson 10867, K); S. Arisan, Kordensha—Tapusha, alt. 3000 ft. (Price 914, K); Mt. Niitaka (Plaice & Kikuchi 914, 11); Pref. Nantu, Feng-shan, Chi-tou, alt. 1200 m (Yamazaki & Yamazaki 83, 11); Nantou Co., Chi-tou to God Tree, alt. 1000 m (Hsu 6129, 11); loc. cit., Chi-tou, alt. 1300 m (Kao 6776, 11); Kagi, Koden (Kawakami & Mori 1735, 11); Taito, Tokeizan (Kawakami & Mori 2201, 11).

Literature cited

Engler, A. 1930. Saxifragaceae. Engler, A., Nat. Pfl.-fam. 2 Aufl. 18a: 74-226 (mainly 200-210). Fedorov, A. A. (ed.). 1969. Chromosome numbers of flowering plants. Acad. Sci. USSR, Leningrad (mainly 664). Hamel, J.L. 1951. Notes préliminaires a l'étude caryologique des Saxifragacées. VI. Bull. Mus. Nat.

C. formosana Hayata in Bot. Mag. Tokyo 20: 55 (1906); in J. Coll. Sci. Univ. Tokyo 30(1) [Mat. Fl. Forms.]: 107 (1911); Icon. Pl. Forms. 2: 10 (1912)—Matsum. et Hayata in J. Coll. Sci. Univ. Tokyo 22 [Enum. Pl. Forms.]: 132 (1906)—Matsum., Ind. Pl. Jap. 2: 172 (1912)—Chun in Act. Phytotax. Sin. 3: 108, t. 5 (1954)—Masamune, Hokuriku J. Bot. 5: back of the front cover of No. 1 (1956)—Li, Woody Fl. Taiwan 239, f. 88 (1963)—Shimizu et Kao in Li et al., Fl. Taiwan 3: 28, pl. 466 (1977), excl. *C. Moellendorffii* et *Hydrangea Moellendorffii* in syn. cit. Type: Taiwan, Tatsuho (S. Nagasawa 714, 11).

C. sinensis (non Hemsl.) sensu Hayata in J. Coll. Sci. Univ. Tokyo

Hist. Paris, 2^e sér. 23: 651-654. Hutchinson, J. 1927. Contributions towards a phylogenetic classification of flowering plants. VI. A. Kew Bull. 1927: 100-107. Wakabayashi, M. 1970. On the affinity in Saxifragaceae s. lato with special reference to the pollen morphology. Act. Phytotax. Geobot. 24: 128-145. Ikuse, M. 1956. Pollen grains of Japan. Hirokawa Pub. Co., Tokyo (mainly 82-85). Ohba, H. 1982. Saxifragaceae. *In* Satake, Y. et al., Wild flowers of Japan, herbaceous plants (Heibonsha, Tokyo) 2: 153-172. (Others are given in the taxonomic treatment.)

* * * *

系統について行った考察結果にもとづいて分類体系を校訂し、各種の記載を行った。オオクサアジサイをクサアジサイの亜種とする見解を提唱した。

□小林義雄：世界の顕微鏡の歴史 (Kobayasi, Y.: The history of the microscopes, especially of Japan) 224pp. 1984. 自家出版. ¥13,000 (送料共). 著者の本業である菌学研究のかたわら、日本とヨーロッパの古顕微鏡 (大量生産に入る以前の顕微鏡) とその製作者、これを使用した人々やその業績などについて、古今の文献を渉猟し、さらに自らの足と眼で確かめてまとめた古顕微鏡物語である。本文は I. 日本の顕微鏡史, II. 日本に現存又は記録に残る古渡顕微鏡, III. 顕微鏡発達史, IV. 顕微鏡による研究成果, V. 顕微鏡雑記の五部からなり、これに和英両文の顕微鏡年表を付す。三十余年にわたる著者の蘊蓄と、多くの文献から選ばれた線画の影印、とりわけ多数の各種古顕微鏡の写真は、この不可視を可視にかえる機器のもつ魅力とそれに惹かれた人と時代をみごとに物語っている。広く研究と機器についても、さまざまに考えさせられる。ただ、撮影上の困難さのためか、被写体がシルエット状になった写真がかなりあるのは、なんとも口惜しい。また、自家出版とはいえ、編集にはプロの手をかりた方がよかったように思われる。それにしても、本書を手にして、誠に敬意と感謝の念を禁じえない。入手には著者 (〒273 船橋市 [redacted]) へ直接に連絡するとよい。 (三浦宏一郎)

□石戸 忠：描く・植物スケッチ 155pp. 1985. 講談社ブルーバックス, 東京. ¥850. 自らの画による検索図鑑など独創的な作品を発表している著者が、植物を知る手段としての植物画の描き方を、多くの実例について解説したもので、これほど懇切なものはまだ無かったと思う。描く順序や注意点が番号つき矢印で一々示され、これから画を描いてみようという人ばかりでなく、分類学専攻者にとっても着眼点の開発や整理に役立つだろう。 (金井弘夫)