

M. SANJAPPA*: **A new species of the genus**
***Indigofera* (Fabaceae) from India**

M. サンジャッパ*: インド産コマツナギ属 (マメ科) の一新種

***Indigofera thothathrii* Sanjappa, sp. nov.**

I. trifoliata L. affinis, sed differt foliis manifeste pinnati-trifoliolatis, foliolis stipellatis, foliolis pedunculis floribusque non glandularibus, calycibus brevioribus, leguminibus angustis, subcylindricis dense adpresse brevi-pubescentibus.

Type: INDIA: Uttar Pradesh, Bharaiich District, Nishangara, near Forest Rest House, 11 Sept. 1956. *H. Pirson* 1412 (Holotype, BLAT; Isotype, CAL).

Erect herbs 40–60 cm tall; stem and branches angular, fine adpressed pubescent. Leaves 3–4 cm long including a petiole of 1.2 cm long, pinnately trifoliolate, alternate; lateral leaflets opposite, 2–2.5×0.8–1.8 cm, obovate or oblanceolate, obtuse at base, rounded and mucronulate at apex, pale and subglabrous above, green and fine adpressed pubescent below; stipules 1–2 mm long, subulate, persistent; petiolules 1–1.5 mm long, pubescent; stipels 1 mm long, subulate, persistent. Racemes 5–10 mm long, congested, axillary, 6–8-flowered. Flowers 4 mm long, yellowish-pink; pedicels short, fine pubescent; bracts 1.3 mm long, lanceolate, fine pubescent without, caducous. Calyx 1.5 mm long, 5-lobed, fine pubescent without, lobes 1.1 mm long, subulate, acute. Standard 3.5 mm long, ovate, obtuse and mucronulate at apex, thinly adpressed puberulous without; wings 2.5 mm long, obliquely-oblong, shortly clawed at base, obtuse at apex, glabrous; keels 3.5 mm long, shortly spurred on sides, fine pubescent without; stamens diadelphous (9+1). Ovary 2.5 mm long, thinly fine pubescent, 6–8-ovuled; style 1 mm long, glabrous; stigma capitate. Pods 18–20×2.5 mm, pendant along-side rachis, linear, subcylindric, straight, shortly apiculate, densely short-adpressed pubescent, glandular, sutures narrow with obscure wings on both sides, valves round, not torulose, 6–8-seeded; endocarp not spotted. Young seeds cylindrical, truncate on one or both ends, smooth. Mature seeds not seen.

Distribution: So far known only from type locality; expected to occur in adjoining parts of Nepal.

* Botanical Survey of India, P. O. Botanic Garden, Howrah-711103, India.

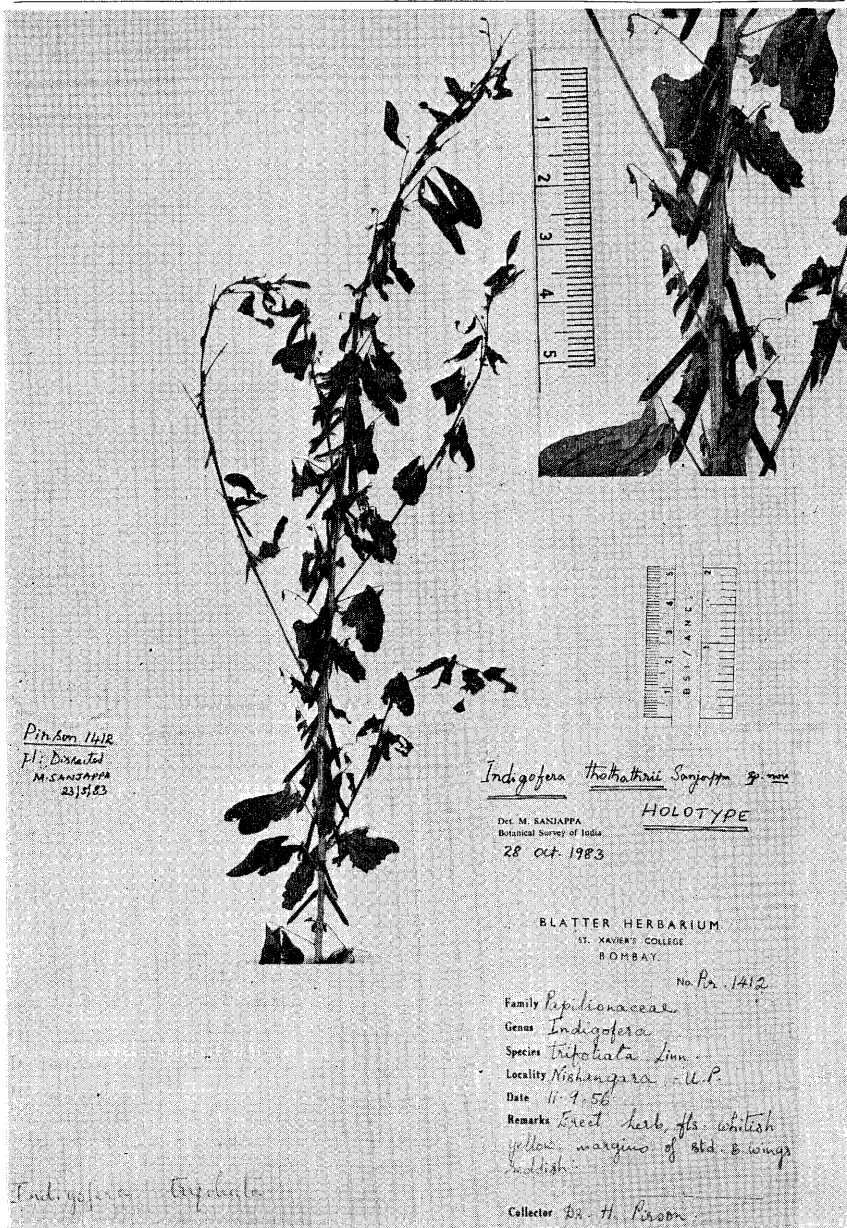


Fig. 1. *Indigofera thothathrii* Sanjappa. Holotype (BLAT).

Fls. & Frs. : August - October.

Notes: *Indigofera thothathrii* Sanjappa very closely resembles *Indigofera trifoliata* L. var. *trifoliata* and var. *nepalensis* Ohashi, but differs from them in several characters which are presented in Tab. 1.

Tab. 1. Differences between *Indigofera thothathrii* and its allied taxa.

<i>I. thothathrii</i>	<i>I. trifoliata</i> var. <i>trifoliata</i>	<i>I. trifoliata</i> var. <i>nepalensis</i>
1. Branches stout, angular, with densely adpressed minute hairs.	Branches stout, terete, glabrescent.	Branches slender, terete, glabrescent.
2. Leaves distinctly pinnate.	Leaves usually digitate, rarely tending towards pinnate type.	Leaves digitate.
3. Leaflets, peduncles, calyx, corolla and style devoid of glands.	Leaflets, peduncles, calyx, corolla and style always glandular.	Leaflets, peduncles, calyx, corolla and style always glandular.
4. Stipels present, persistent.	Stipels absent.	Stipels absent.
5. Calyx (1.5 mm long) and corolla white hairy.	Calyx (1.5-2 mm long) and corolla usually brown hairy, rarely mixed with white hairs.	Calyx and corolla usually brown hairy.
6. Filaments 3 mm long.	Filaments 6-7 mm long.	Filaments 6-7 mm long.
7. Pods 18-20×2.5 mm, blackish brown, obscurely winged, with densely adpressed minute hairs; valves rounded, never torulose.	Pods 12-23×2-4 mm, deep brown, prominently broad winged, glabrescent; valves faintly to prominently torulose.	Pods 8-10×1 mm, light brown, scarcely winged, glabrescent; valves apparently torulose.
8. Seeds 6-8 per pod.	Seeds 4-8 per pod, 1.5-2×1-1.5 mm.	Seeds 2-4 per pod, 1×0.5 mm.

The species is named in honour of Dr. K. Thothathri, Joint Director, Botanical Survey of India, in appreciation of his contributions to the study of Indian legumes.

The author wishes to thank Director, Botanical Survey of India, for encouragement and facilities. He is indebted to Prof. (Mrs.) S. M. Almeida, St. Xavier's College, Bombay, for providing facilities to work at BLAT and to Dr. N. C. Majumdar, Botanical Survey of India, Howrah, for latinising the diagnosis.

* * * *

インド Uttar Pradesh 州からコマツナギ属の新種 *Indigofera thothathrii* Sanjappa を記載する。本種は *I. trifoliata* L. に似るが、その特徴と区別点は Tab. 1 に示す。