

朝比奈泰彦<sup>\*</sup>: 地衣類雑記 (§§ 252-253)Yasuhiko ASAHINA<sup>\*</sup>: Lichenologische Notizen (§§ 252-253)

§ 252. *Usnea ceratina* Ach.; Zahlbr. Cat. Lich. Univ., p. 619 (1810); Motyka, Monograph, p. 365 (1936); Asahina, Lich. Jap., vol. III, p. 103 (1956), sub *U. roseola* Vain. p.p. et Pl. XXI, Fig. 1 and 2; *ibid.*, p. 107, sub *U. creberrima* Vain. et Pl. XXII, Fig. 1, 2, and 3.

Thallus 5-10-20 cm long, prostrate or pendulous, grayish-white, afterwards brownish, opaque. Base ca. 1.2 mm thick, principal stem very short, not constricted, primary and secondary branches virgate, terete, flexuose, gradually attenuate towards the apices, chiefly dichotomously branched, dispersed throughout the total length with minute, often rugously arranged, afterwards sorediosely bursting verruculae which are transformed to white crateriform soralia in the middle part of the branches. Perpendicular branchlets very rare. Cortex 50-200 $\mu$  thick, rather hard, with incised inside; medulla 120-300 $\mu$  thick, hyphae dense, in the exterior part with rosy pigment; axis 300-500 $\mu$  thick, amounting 35-50% of diameters of branches.

Reaction: Med. K-, P-. Containing usnic and diffractaic acids.

Up to the present we have had some doubtful records about the occurrence of *U. ceratina* Ach. in Japan. Formerly the present writer misidentified several specimens of *U. ceratina* partly as *U. creberrima*, partly as *U. roseola*, and partly as *U. subroseola*, so that following corrections must be carried out to the plates of "Lichenes of Japan", vol. III.

Pl. XXI. Fig. 1....*U. ceratina* Ach., Fig. 2....*U. ceratina* ssp. *incurviscens* (Arn.) Mot., Fig. 3....*U. roseola* Vain.; Pl. XXII. Figs. 1 and 2....*U. ceratina* Ach., Fig. 3....*U. ceratina* Ach. ssp. *incurviscens* (Arn.) Mot.

*Usnea ceratina* Ach. は欧州でも北米でも可なりの普通種であるがこれが日本に産する記録は不完全のものが若干あるのみであった。筆者の日本之地衣 第三には時に *U. roseola* Vain. と或る時には *U. creberrima* Vain. と誤解されて記載された。従てその附図に関しては 欧文欄にある様な訂正を必要とする。又日本国内の分布は現在

<sup>\*</sup> National Science Museum (Natural History Institute), Hyakunin-cho 3-23-1, Shinjuku-ku, Tokyo. 国立科学博物館.

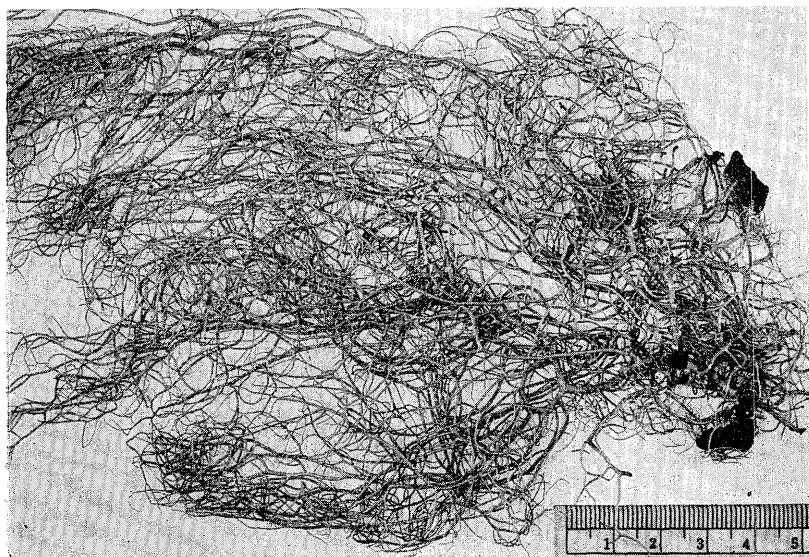


Fig. 1. *Usnea ceratina* Ach. from Japan.

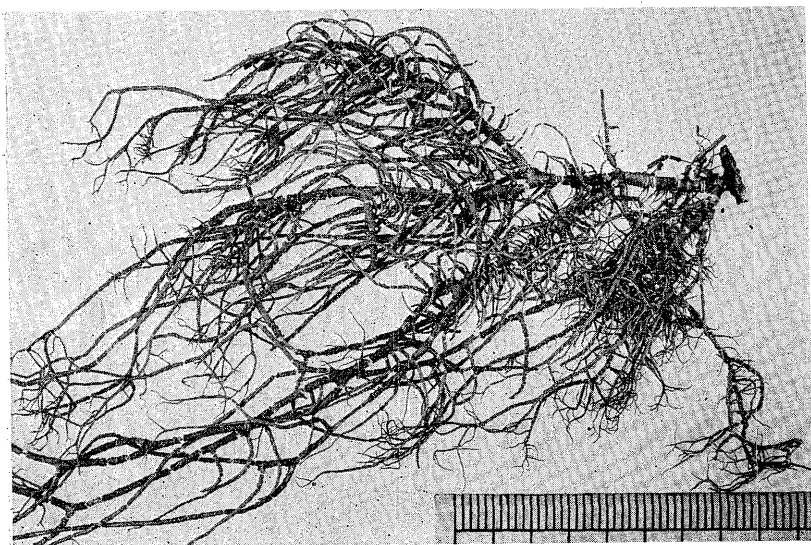


Fig. 2. *Usnea croceorubescens* Vain.

は陸前が最北で、更に南下して関東諸山岳地帯、富士山麓をへて畿内から丹波、紀州高野山、中国諸地及び四国の東部に広がって居る普通種である。

§ 253. *Usnea croceorubescens* Vain.

Some time ago the writer<sup>1)</sup> identified the Japanese lichen *Usnea croceorubescens* Vain. with North American *U. mutabilis* Stirt. Motyka stated in his description of *U. croceorubescens* as well as of *U. mutabilis*, the thalline dimensions to be ca. 5 cm long. In the author's ample collection there are several specimens, which attain the length of 20 cm. Their basal stems are 1.5 mm thick and provided with prominent articulations (Fig. 2).

Motyka expressed his opinion, that the specific name "croceorubescens" is inadequate, because it seems to be induced by the thalline color "glaucescenti-rubescens", which is in reality caused by the improper preservation in the herbarium. The present writer is of opinion that "croceorubescens" is the color of the medulla as Vainio himself expressed in his original description.

The chemical contents of *U. croceorubescens* as well as of *U. mutabilis* are not known. However, chemical features of these two species<sup>1)</sup> are so unique, that there exists no doubt that they contain the same substances: dark colored crystal druses and colorless figures with irregular circumferences of a frothy substance.

先頃筆者<sup>1)</sup>は日本産の *Usnea croceorubescens* Vain. は北米産の *U. mutabilis* Stirt. と同一物であると発表した。Motyka の記載によると此の両者は何れも体長 5 cm 程度となって居るが筆者の所持する多数の標本の中には体長 10 cm 位のものも稀でなく、往々 20 cm に達するものがある。又基部の太さも巾 1.5 mm のものがある。又 Motyka の解説によると此の種名は全体の色から誘導されたとあるがこれは原著者の隨層の記載から来たものである。又 *U. croceorubescens* の含有成分はウスニン酸以外は不明であるが、筆者の所謂 *materia rubra* と称する放射簇晶および本体は不明であるが泡沫状の雲形模様物質との出現で、両者の同一である事に間違いないものと思う。

1) J. J. B. 40: 174. 1965. Fig. 5.