

M. P. NAYAR*: **Three new species of *Poikilogyne***
(**Melastomataceae**) from New Guinea

M. P. ナヤール*: ニューギニア産 *Poikilogyne* 属
(ノボタン科) の 3 新種

Poikilogyne neglecta Nayar, sp. nov. (Fig. 1)

Frutex. Rami teretes vel subquadrangulares, dense glanduloso-hirti, setis 0.5-1 mm longis. Folia ovata, 4-7 cm longa, 2.5-4.5 cm lata, basi cordata vel subcordata, apice acuta, margine ciliato-serrulata, supra et subtus hirta, 7-nervia, venulis principalibus subtus prominentibus, nervulis transversalibus distinctis, subcoriacea, petiolis 1.8-4 cm longis, dense glanduloso-hirtis. Inflorescentia terminalis, paniculata, 5-12 cm longa, dense hirta; bractee lanceolatae vel subulatae, 0.8-1.2 mm longae; pedicellus 5-8 mm longus, hirtus. Calycis tubus campanulatus, 4-5 mm longus, 3.5-4 mm latus, dense setoso-puberulus, setis 0.6-0.9 mm longis; limbus dentatus, dentibus breviter late triangularibus. Petala 5, ovato-oblonga, 10-12 mm longa, 3.5-4.5 mm lata. Stamina 10, aequalia, filamentis 3.5-4 mm longis, antheris oblongis vel lanceolato-obtusis, 3.5 mm longis, 1-poris, connectivo non producto, dorso in calcar 1 mm longum exeunte, antice inappendiculato. Stylus 10-12 mm longus, apice incrassatus. Capsula cylindrica 8-9 mm longa, 5.5-6.5 mm lata, 10-costata, hirta. Semina cuneata, 0.5-0.6 mm longa.

New Guinea: West New Guinea, Anggi-Gira, Bivak, 1850 m., (Boswezen BW 2002, Jan. 7, 1955-type in L).

The plant is closely allied to *Poikilogyne rugosa* Nayar, but differs in the nature of leaves, pubescence and shape of calyx-lobes. In *P. rugosa* the pubescence consists of furfuraceous tomentum and 3-4 mm long bristles; whereas in *P. neglecta* the tomentum is puberulous with short glandular hairs. In *P. rugosa* the leaves are rugose and the calyx-lobes are triangular (3 mm long); while in *P. neglecta* the leaves are not rugose, but hirsute and the calyx-lobes are short and wide triangular (0.5-0.8 mm long).

* Central National Herbarium, Botanical Survey of India, Botanic Garden P. O., Howrah-3, Calcutta, India.

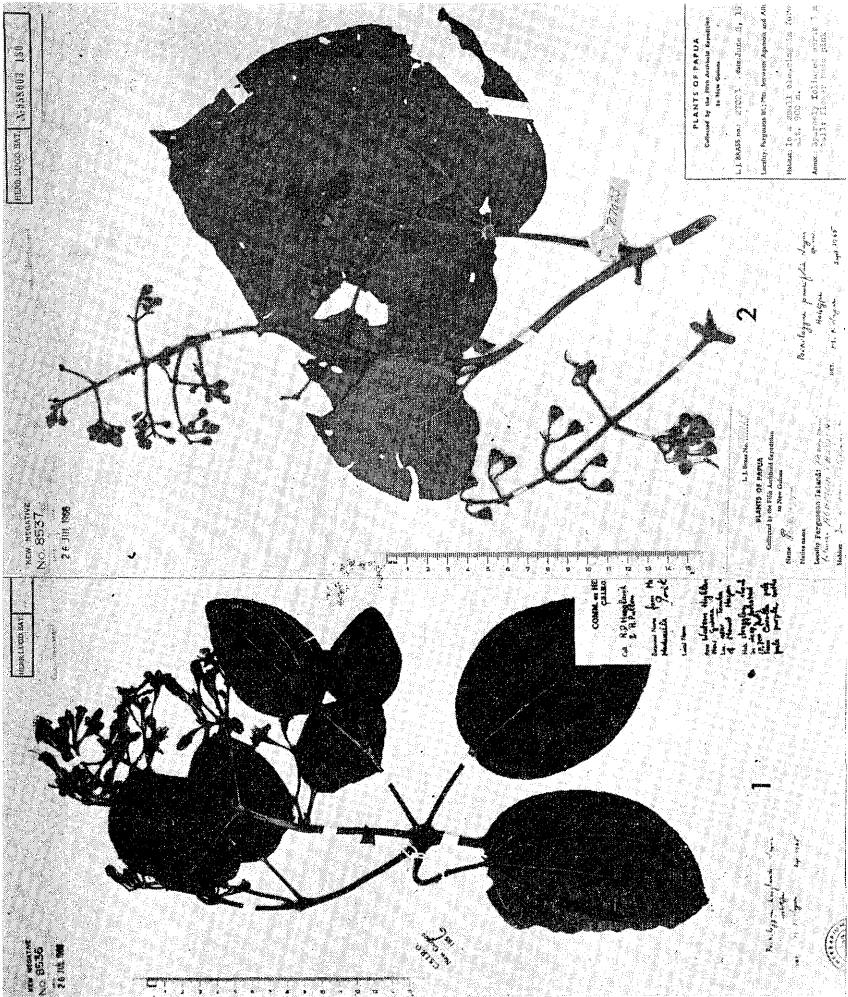


Fig. 2. 1. *Poikilogyne hooglandii* Nayar. Holotype. 2. *Poikilogyne paucifolia* Nayar. Holotype.

Western Highlands Dist., c. 2600 m., (R. D. Hoogland & R. Pullen, no. 6077, Aug. 29, 1956-type in L).

Poikilogyne hooglandii is allied to *P. ledermannii* Mansf., but differs in having long petiole (3-6.5 cm long), larger calyx-tube (7.5-8.5 mm long) and ovate-rotundate leaf with rotundate base and rotundate-obtuse apex ; whereas

in *P. ledermannii* the petiole is shorter (2-3.5 cm long), the calyx-tube is shorter (4 mm long) and the leaf is ovate-elliptic with narrow apex and subcordate base.

Poikilogyne paucifolia Nayar, sp. nov. (Fig. 2-2)

Frutex, 3 m altus (teste collectore). Rami juniores angulati, dense setosi et puberuli, vetustiores subquadrangulares, parce setosi. Folia ovato-cordata, 10-20 cm longa, 8-18 cm lata, basi cordata, abrupte acuto-acuminata, margine dentata, supra glabra, subtus juniora glabrata vel puberula, 7-9-nervia, venulis transversis distinctis, chartacea; petiolis 3-8 cm longis, setosis et parce puberulis. Inflorescentia paniculata, terminalis, 20-25 cm longa, setoso-puberula; bracteolae subulatae 1-1.5 mm longae; pedicellus 3-5 mm longus, dense setoso-farinosus, setis 2-2.5 mm longis. Calycis tubus obconicus, 4.5-5 mm longus, supra 5-5.5 mm latus, dense setoso-farinosus, setis 1.5-2 mm longis; limbus obsolete 5-dentatus vel subdilatus. Petala 5, ovata, 6-7 mm longa, 5-6 mm lata. Stamina 10, aequalia, filamentis 3 mm longis, antheris oblongo-lanceolatis, 3.5 mm longis, 1-poris, dorso in calcar 0.5 mm longum exeunte, antice inappendiculatis. Stylus 6-7 mm longus, glaber. Capsula obconica, 6-7 mm longa, 5-6 mm lata, 10-costata, setoso-farinoso. Semina cuneata 0.4-0.5 mm longa, numerosa.

New Guinea: Papua, Fergusson Island, Mts. between Agamoia and Ailuluai, 900 m (L. J. Brass, no. 27023, Jun. 8, 1956-type in L).

Poikilogyne paucifolia is allied to *P. rubro-suffusa* Ohwi but differs in having setose farinose branches, inflorescence and larger flowers; whereas in *P. rubro-suffusa* the branches and inflorescence are glabrous or glabrate and the flowers are comparatively smaller.

Acknowledgements I wish to express my gratitude to Sir George Taylor, the former Director, Royal Botanic Gardens, Kew, for all facilities during my stay at Kew from 1961-67. I am greatly indebted to Prof. Dr. C. G. G. J. van Steenis, Director, Rijksherbarium, Leiden and to Dr. R. C. Bakhuizen van den Brink jr. for their hospitality and help during my visit to Leiden in 1965.

* * * *

ノボタン科の *Poikilogyne* 属はボルネオ、ニューギニアに分布し、十数種知られている。ライデンの Rijksherbarium に所蔵されている標本を調べた所、ニューギニアから3種類新種が発見されたので報告する。