

## Notulae de Hepaticis Japonicis (VI).\*

auctore S. HATTORI.

服部新佐: 日本産苔類雜記(其六)

49) **Bazzania coreana** (STEPHANI) S. HATTORI, comb. nov. (Fig. 21).  
*Mastigobryum Coreanum* STEPHANI, Spec. Hepat. VI, 470 (1924).

Planta mediocris vel minor, plus minus rigida, flavo-rufescens, in rupibus dense prostrata. Caulis ad 3 cm longus, 0.28 mm in diametro, regulariter longeque furcatus, flagellis parvis, brevibus. Folia caulina imbricata, recte patula, parum concava, in plano ovato-oblonga, latiuscula, parum asymmetrica, 1~1.1 mm longa, medio 0.6~0.7 mm lata, margine antico e basi haud ampliata longe arcuato, postico substricto, apice recte truncato, 0.3 mm lato, emarginato-tridentato, dentibus parvis, acutis. Cellulae apicales tenerae, ca. 18 $\mu$  in diametro, parietibus tenuibus, trigonis parvis, basales 36~42  $\times$  22~24 $\mu$ .

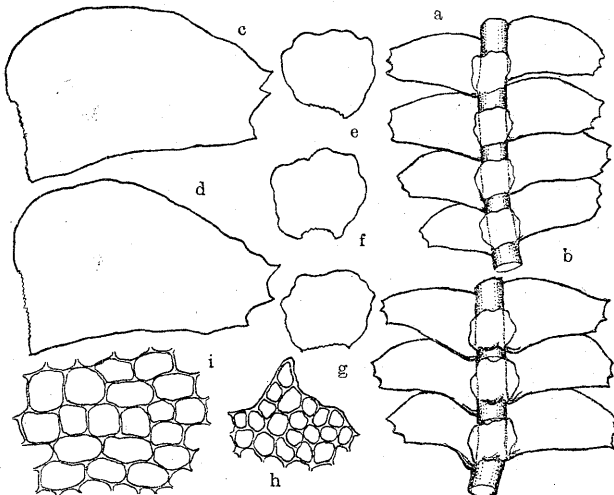


Fig. 21. *Bazzania coreana* (STEPH.) S. HATTORI.

a, b. 莖ノ一部, 腹面觀 (×15). c, d. 莖葉 (×35). e~g. 莖腹葉 (×35). h. 葉端ノ1齒牙 (×145). i. 葉基部ノ細胞 (×145). 圖ハ no. 89 (FAURIE 採集) = 依ル.

\*) 本研究ハ文部省科學研究費ノ補助ニ依リ遂行セルモノデアル。

metientes, parietibus tenuibus, trigonis majusculis, acutis. Amphigastria caulina parva, caule parum latiora, transverse inserta, adpressa, subquadrata, 0.31 mm longa, 0.33 mm lata, apice leviter repanda, angulis rotundatis; cellulae hyalinae, leptodermes, rectangulares,  $30\mu$  longae,  $15\mu$  latae.

Nom. Nippon. *Tyôsen-mukadegoke* (IHSIBA 1930).

Spec. exam. Corea: Kaksipaoe (FAURIE, no. 89, 24. Aug. 1906, det. STEPHANI in Herb. Univ. Imp. Kyôto.).

Distr. Endemica.

50) **Bazzania oshimensis** (STEPHANI) HORIKAWA in Journ. Sci. Hiroshima Univ. Ser. B, Div. 2, II, 197 (1934), sine descr. (Fig. 22).

*Mastigobryum oshimense* STEPHANI, Spec. Hepat. III, 466 (1908).

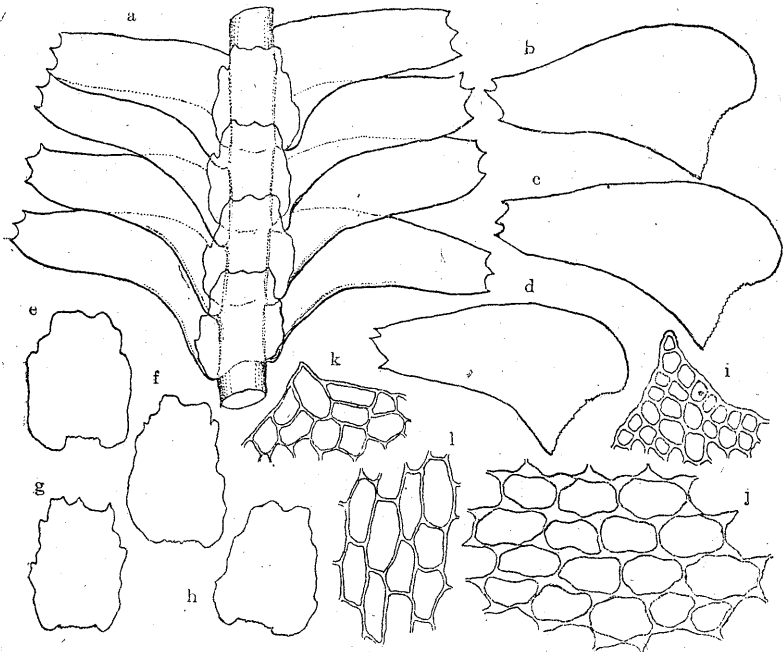


Fig. 22. *Bazzania oshimensis* (STEPH.) HORIKAWA.

a. 莖ノ一部, 腹面觀 ( $\times 15$ ). b~d. 莖葉 ( $\times 15$ ). e~h. 莖腹葉 ( $\times 15$ ). i. 葉端ノ1齒牙 ( $\times 145$ ). j. 葉基部ノ細胞 ( $\times 145$ ). k. 腹葉頂端ノ一部 ( $\times 145$ ). l. 腹葉基部ノ細胞 ( $\times 145$ ). 圖ハ no. 639 (FAURIE 採集) = 依ル.

Planta major, rigida, flavo-virens, sicca brunnescens, in cortice laxe caespitans. Caulis ad 7 cm longus, 0.45~0.5 mm in diametro, regulariter repetito-furcatus, flagellis validis, numerosis. Folia caulina imbricata, apicibus liberis, subrecte patula, leviter decurva, in plano longe ovato-oblonga, leviter falcata, 2.2~2.4 mm longa, basi 1.1~1.2 mm lata, margine antico e basi rotundato-ampliata late arcuato, postico $\pm$ sinuato, apice porrecto, truncato, 0.35~0.4 mm lato, tridentato, dentibus validis, triangulatis, acutis, medio validiore, sinubus excisis. Cellulae apicales 22~24 $\times$ 15~18 $\mu$ , parietibus parum incrassatis, trigonis parvis, basales 55~60 $\times$ 28~36 $\mu$  metientes, parietibus tenuibus, trigonis magnis, acutis, plus minus confluentibus. Amphigastria caulina maxima, imbricata, adpressa, subtransverse inserta, tenera, in plano subrectangularia, subduplo longiora quam lata, 1.2~1.3 mm longa, basi 0.8~0.85 mm lata, apice parum angustiora vel aequilata, leviter lobata (lobis obtusis), erosula, marginibus lateralibus parum repandis, raro angulatis; cellulae leptodermes, rectangulares, pallidae.

Nom. Nippon. *Ôsima-mukadegoke* (IHSIBA 1930).

Spec. exam. Ôshima in Liukiu (FAURIE, no. 639, Jul. 1900, det. STEPHANI in Herb. Imp. Univ. Kyôto.).

Distr. Endemica.

51) **Bazzania ovifolia** (STEPHANI) S. HATTORI, comb. nov. (Fig. 23).

*Mastigobryum ovifolium* STEPHANI, Spec. Hepat. III, 464 (1908).

Planta mediocris, pallide flavo-virens, sicca plus minus brunneola, in cortice dense prostrata. Caulis ad 3 cm longus, 0.3 mm in diametro, validus, olivaceus, regulariter furcatus, flagellis brevibus. Folia caulina imbricata, recte patula, subplano-disticha, basi antica breviter inserta, in plano late ovalia, subsymmetrica, 1.2~1.3 mm longa, basi 0.9~1 mm lata, apice parum oblique truncato, 0.4 mm lato, tridentato, dentibus parvis, porrectis, acutis, sinubus lunatis, substrictis. Cellulae apicales 20~24 $\mu$  in diametro, parietibus parum incrassatis, trigonis majusculis, basales 36~40 $\times$ 26~28 $\mu$  metientes, trigonis majusculis, plus minus confluentibus. Amphigastria caulina magna,  $\pm$ imbricata, caule subtriplo latiora, subrecte patula, in plano late rotundato-quadrata, 0.6~0.65 mm longa, 0.8~0.85 mm lata, apice fere breviter 4-lobata (lobis obtusis) sed saepicule irregulariter repanda vel dentata; cellulae ut in foliis.

Nom. Nippon. *Tamagoba-mukadegoke* (IHSIBA 1930).

Spec. exam. Prov. Kai: in monte Komagatake (FAURIE, no. 1747, Sept.

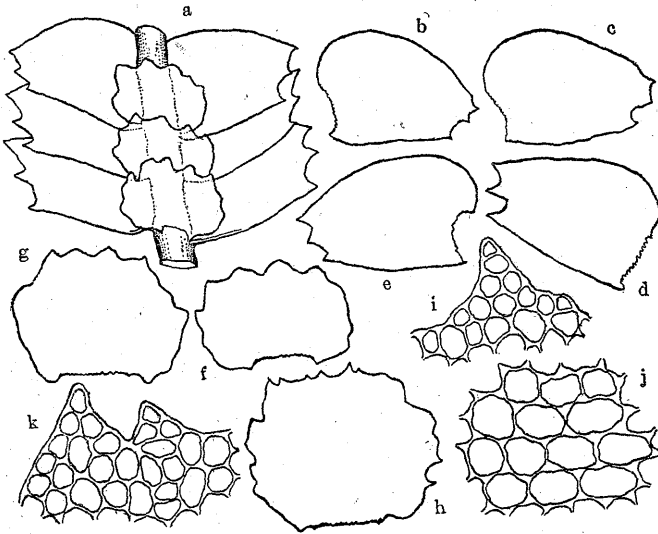


Fig. 23. *Bazzania ovifolia* (STEPH.) S. HATTORI.

a. 莖ノ一部, 腹面觀 (×15). b~e. 莖葉 (×15). f~h. 莖腹葉 (×30). i. 葉端ノ1齒牙 (×145). j. 葉基部ノ細胞 (×145). k. 腹葉頂端ノ一部 (×145). 圖ハ no. 1747 (FAURIE 採集) = 依ル.

1905, det. STEPHANI in Herb. Univ. Imp. Kyōto).

Distr. Endemica.

52) ***Bazzania vastifolia*** (STEPHANI) S. HATTORI, comb. nov.

(Fig. 24).

*Mastigobryum vastifolium* STEPHANI, Spec. Hepat. III, 503 (1908).

Planta mediocris, rigida, virens, aetate brunnescens, in cortice dense caespitosa. Caulis 3 cm longus, 0.3 mm in diametro, crassus, olivaceus, parum furcatus, flagellis paucis, brevibus. Folia caulina parum imbricata, recte patula, basi antica ad medium inserta, in plano late ligulata, asymmetrica, ca. 1.4 mm longa, basi 1.1~1.2 mm lata, margine antico e basi ampliata late arcuato, postico substricto, apice late truncato, 0.6~0.7 mm lato, tridentato, dentibus latiuscule triangulatis, acutis, sinubus lunatis, substrictis, saepicule erosulis. Cellulae apicales 24~28 $\mu$  in diametro, parietibus validis, trigonis majusculis, basales 40~50 $\times$ 30~36 $\mu$  metientes, parietibus tenuibus, trigonis magnis, acutis. Amphigastria caulina magna, subtransverse inserta, contigua,

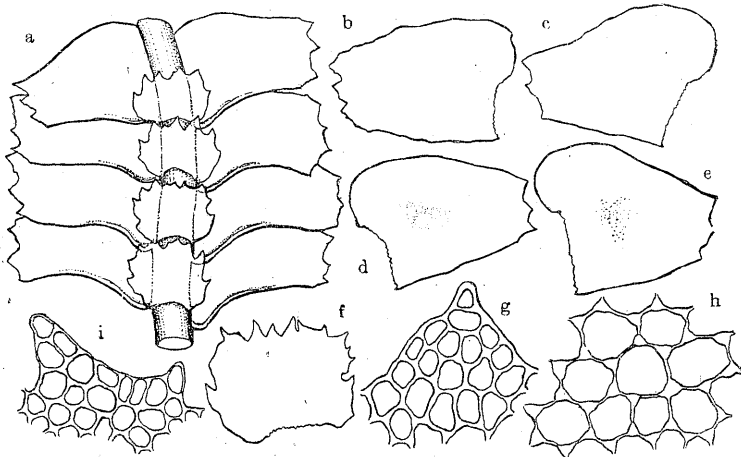


Fig. 24. *Bazzania vastifolia* (STEPH.) S. HATTORI.

a. 莖ノ一部, 腹面觀 (×15). b~e. 莖葉 (×15). f. 莖腹葉 (×30). g. 葉端ノ1齒牙 (×145). h. 葉基部ノ細胞 (×145). i. 腹葉頂端ノ一部 (×145). 圖ノ no. 1871 (FAURIE 採集) = 基ク.

caule plus duplo latiora, apice plus minus decurva, in plano quadrata, 0.45~0.5 mm longa, 0.7~0.75 mm lata, apice 5~7 inciso-lobata, lobis triangulatis, acutis, irregularibus; cellulae ut in foliis.

Nom. Nippon. *Sitaba-mukadegoké* (IHSIBA 1930).

Spec. exam. Prov. Ugo: Kita-akita-gun, Yatate-mura, Zimba (FAURIE, no. 1871, Oct. 1905, det. STEPHANI in Herb. Univ. Imp. Kyôto.).

Distr. Endemica.

53) ***Calypogeia verruculosa*** S. HATTORI, spec. nov. (Fig. 25).

Sterilis; mediocris, e viridi flavo-olivacea, inferne brunnescens, in humis rupibus vel terra depresso-caespitosa. Caulis prostratus, crassus, olivaceus vel brunneolus, 15~25 mm longus, 0.3 mm in diametro, cum foliis 2 mm latus, parum ramosus. Folia caulina parum imbricata, sed saepe contigua vel remota, oblique patula, valde concava, apice ± arcte decurvo, dorso caulem 1/2~2/3 tegentia, basi ad medium oblique inserta, in plano trigono-ovata, 1.15~1.3 mm longa, 0.8~1 mm lata, apice acuta sed saepicule bidentata vel obtusa. Cellulae apicales 30~35 × 28 $\mu$ , mediae 40~45 × 30~35 $\mu$ , basales 60~75 × 30 $\mu$  metientes, parietibus tenuibus, trigonis majusculis, acutis, cuticula

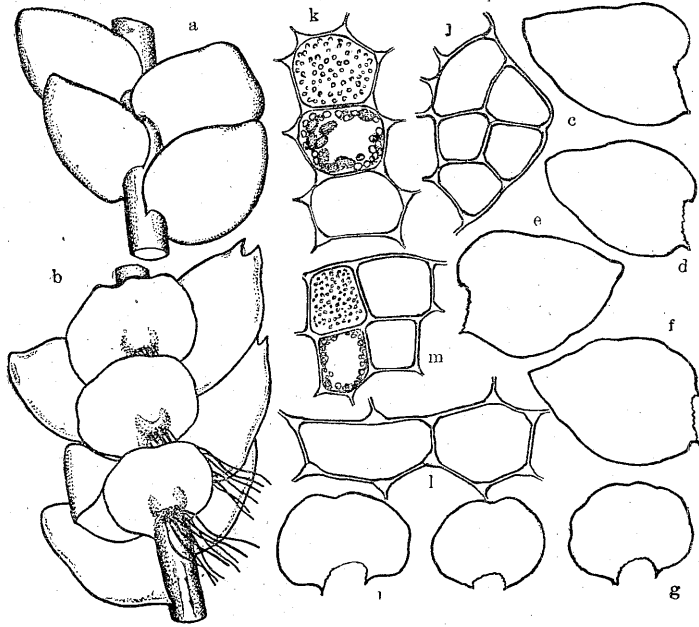


Fig. 25. *Catypogea verruculosa* S. HATTORI.

a. 莖ノ一部, 背面觀 (×16). b. 同前, 腹面觀 (×16). c~f. 莖葉 (×16). g~i. 腹葉 (×16). j. 葉頂部ノ細胞 (×265). k. 葉中部ノ細胞, 上方ノ細胞ハ表皮ノ小疣狀突起ヲ示シ, 中央ノモノハ於テハ油様體 (大形) 及ビ葉綠粒 (小形) ヲ示ス (×265). l. 葉基部ノ細胞 (×265). m. 腹葉頂端ノ細胞, 表皮ノ小疣狀突起 (上方ノ細胞) 及ビ内容物 (下方ノ細胞) ヲ示ス (×265). 圖ハ no. 1112 = 基ク.

dense verruculosa. Amphigastria caulina contigua vel remota, subplana, adpressa, late reniformia, 0.6~0.67 mm longa, 0.9~1 mm lata, apice subtruncata vel plus minus biloba vel retusa, basi sinuatim inserta, radicellis numerosis, e basi amphigastriorum ortis; cellulae amphigastrii ut in folii. Cetera desunt.

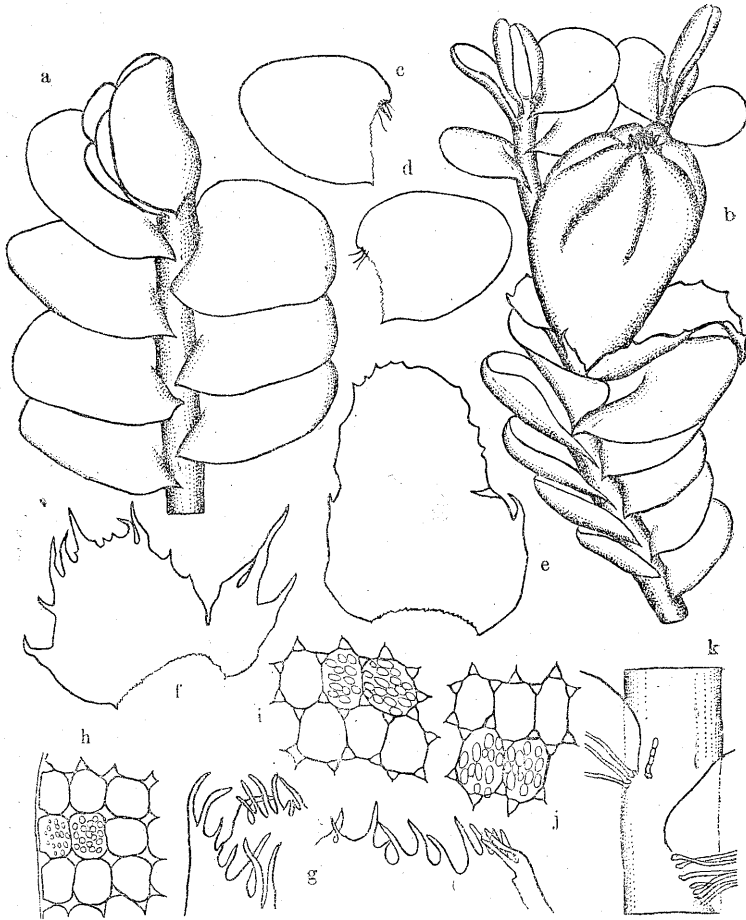
Nom. Nippon. *Takane-horagokemodoki* (nov.).

Spec. exam. Prov. Sinano: Minami-idumi-gun, mt. Zyôendake—Kamikôti (S. HATTORI, no. 1112—Typus, 20. Aug. 1941 in Herb. Mus. Sci. Tokyo.).

Distr. Honsyû.

54) **Jamesoniella nipponica** S. HATTORI, spec. nov. (Fig. 26).

Dioica; majuseula, flavo-virens, inferne brunnescens, in humis rupibus,

Fig. 26. *Jamesoniella nipponica* S. HATTORI.

- a. 莖ノ上部, 背面觀 (×15). b. 同前, 花被ヲ有スルモノ (×15). c, d. 莖葉 (×15).  
 e, f. 苞葉 (×15). g. 花被口部ノ刺毛, 平面觀 (×38). h. 葉端ノ一部 (×240). i.  
 葉中部ノ細胞 (×240). j. 葉基部ノ細胞 (×240). k. 莖ノ一部, 腹面觀 (×38).  
 圖ハ no. 875 = 基ク.

raro cortice dense caespitosa. Caulis crassus, olivaceus vel brunneolus, ad 3 cm longus, 0.3 mm in diametro, cum foliis 2.4~2.9 mm latus, subsimplex, radicellis validis, hyalinis, numerosis. Folia caulina imbricata, subrecte patula, plus minus cauli a latere adpressa, vix decurrentia, ovata, 1.2~1.3 mm

longa, 1~1.1 mm lata. Cellulae apicales  $24\sim 26 \times 18\sim 22\mu$ , mediae  $26\sim 34 \times 24\sim 26\mu$ , basales  $30\sim 36 \times 22\sim 24\mu$  metientes, parietibus tenuibus, trigonis magnis, acutis; cuticula dense verruculosa. Amphigastria caulina minima, filamentosa, 4~5-cellularia, mox deleta. Gynoecia in caule terminalia, saepius innovata; folia floralia caulinis majora, ovato-ligulata, irregulariter spinata vel angulato-dentata. Amphigastrium florale magnum, oblongum, profunde 2~3-lacinatum, laciniis longis, setaceis, folio uno latere coalitum. Perianthia magna, exserta, obovoidea, 2.2 mm longa, 1.4 mm lata, superne 5~7-plicata, plicis obtusis, inflatis, ore contracto, dense spinoso. Androecia in caule terminalia, raro mediana, bracteis multi-jugis, confertissimis, basi saecatim inflatis.

Nom. Nippon. *Miyama-urokogoke* (nov.).

Spec. exam. Prov. Uzen: Nisi-murayama-gun, Asahi-kôsen (S. HATTORI, no. 875—Typus, 24, Jul. 1941 in Herb. Mus. Sci. Tokyo.).

Distr. Honsyû.

55) **Marsupella parvitexta** STEPHANI, Spec. Hepat. II, 26 (1901).

(Fig. 27).

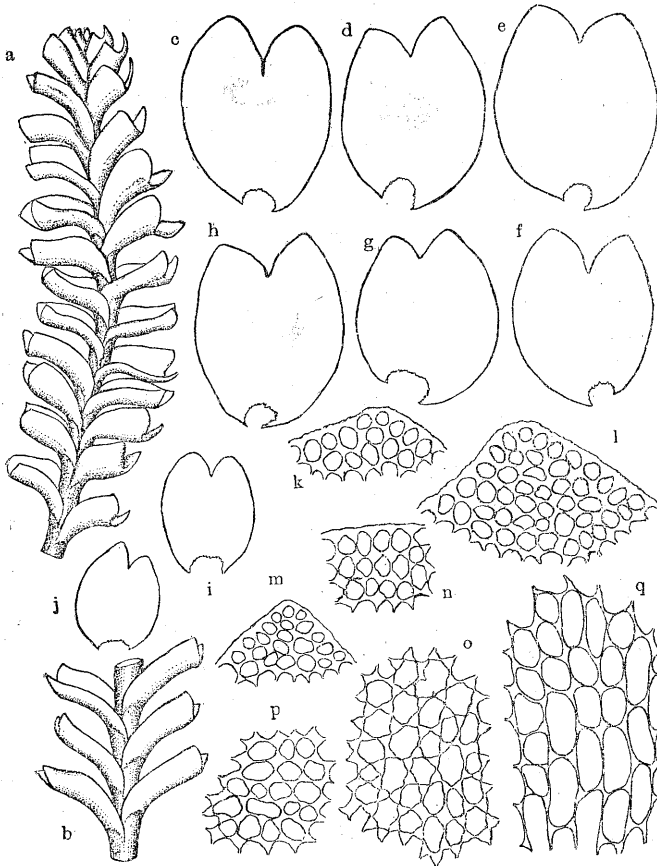
Planta medioeris, fusco-olivacea, in rupibus dense depresso-caespitosa. Caulis 10~15 mm longus, 0.16~0.2 mm in diametro, e caudice repente erectus, parum ramosus, cum foliis 1.1~1.3 mm latus, basi flagelliferus, flagellis validis. Folia caulina remotiuscula, e basi breviter vaginante subrecte patula, conduplicatim concava, carina plus minus arcuata, in plano ovalia, 0.8~0.9 mm longa, 0.7~0.75 mm lata, apice ad 1/4 acute inciso-biloba, lobis ovato-trigonis, subacutis obtusiuscule, fere aequalibus sed saepicule antico  $\pm$  angustiore, basi antico parum decurrentia. Cellulae minimae, apicales 7~10  $\times$  6~8 $\mu$ , mediae 15~17  $\times$  10~11 $\mu$ , basales 25~30  $\times$  12~14 $\mu$  metientes, trigonis magnis, quadratim confluentibus, basi medioeribus. Reliqua desunt.

Nom. Nippon. *Koamime-turuurokogoke* (YASUDA 1911); *Koamime-mizogoke* (IHSIBA 1930).

Spec. exam. Prov. Tosa: Agawa-gun, in monte Tehazu-yama (YOSHINAGA, no. 22, 25, Sept. 1898, det. STEPHANI sub *Marsupella tubulosa* STEPH. in Herb. YOSHINAGA).

Distr. Sikoku:



Fig. 27. *Marsupella pervitexta* STEPH.

a. 莖ノ上部, 背面觀 (×15). b. 莖ノ一部, 腹面觀 (×15). e~j. 莖葉 (×30). k~m. 葉ノ裂片頂端 (×300). n. 葉緣ノ一部 (×300). o, p. 葉中部ノ細胞 (×300). q. 葉基部ノ細胞 (×300). 圖中 b, i~j, m, p ハ no. 25 (吉永氏採集), 他ハスベテ no. 22 (吉永氏採集) = 基ク.

56) **Frullania usamiensis** STEPHANI in Bull. Herb. Boiss. V, 91 (1897); Spec. Hepat. IV, 351 (1910). (Fig. 28).

Dioica; majuscula, olivacea vel fusco-rufa, flaccida, in rupibus vel cortice dense prostrata. Caulis 3~4 cm longus, 0.2 mm in diametro, nigrescenti-olivaceus vel fuscus, irregulariter pinnatim ramosus, ramis primariis 1~1.5

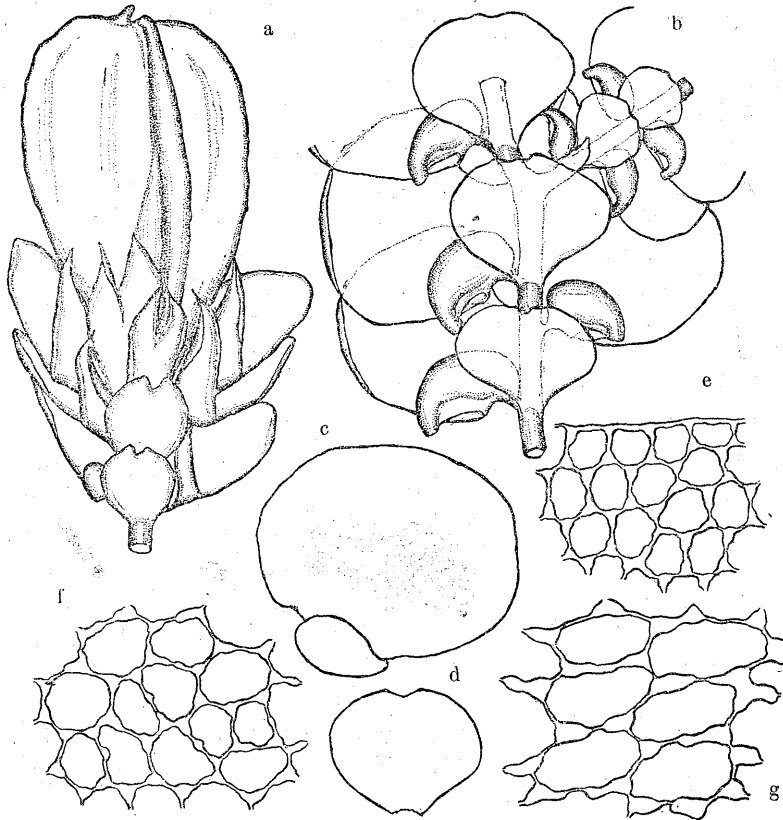


Fig. 28. *Frullania usamiensis* STEPH.

a. 雌花, 腹面觀 (×21). b. 莖ノ一部, 腹面觀 (×21). c. 葉 (×21). d. 腹葉 (×21). e. 葉縁ノ細胞 (×333). f. 葉中部ノ細胞 (×333). g. 葉基部ノ細胞 (×333). 圖ハ no. 2835 ヲ使用セリ.

mm longis. Folia caulina dense imbricata, recte patula, concava, apice anguste decurva, antice caulem superantia, in plano late oblonga vel obovata, 1.6 mm longa, 1.3 mm lata, apice subtruncata vel late obtusa, basi antica rotundata, exappendiculata. Cellulae apicales  $16\sim 17\mu$  in diametro, trigonis majusculis, mediae  $42\times 32\mu$ , trigonis majusculis, parietibus tenuibus sed in medio saepicule nodulose incrassatis, basales  $52\times 29\mu$  metientes, trigonis magnis, subnodulosis. Lobulus oblongus, duplo latior quam longus (0.3~0.33 mm longus, 0.6~0.65 mm latus), vertice late rotundatus, apice breviter

rostratus, rostro  $\pm$  decurvo, carina conjunctionis a caule subrecte patula. Amphigastria caulina magna, subtransverse inserta, e obcuneata basi late reniformia, 0.6 mm longa, 0.8~1 mm lata, apice minute emarginata (lobis obtusissimis), raro subtruncata vel ad 1/8 inciso-bidentula. Gynoeceia in ramis terminalia, saepe uno latere innovata; folia floralia bijuga, intima elliptica, subacuta, integerrima, lobulo profunde soluto, vix brevior, lanceolato, plano vel plus minus canalitulato, integerrimo. Amphigastrium florale intimum lobulo aequilongum, liberum, ad medium inciso-bifidum, lobis subplanis, integerrimis anguste triangulatis, porrectis, acutis. Perianthia obovata, alte triplicata, plica sublevi, rostro parvo. Androeceia in ramis brevissimis terminalia, capitata, bracteis ad 4-jugis.

Nom. Nippon. *Usami-frullanigoke* (YASUDA 1911); *Usami-yasudegoke* (IHSIBA 1930).

Spec. exam. Prov. Tikuzen: in monte Hukuti-yama (S. HATTORI, no. 2835, 6. Sept. 1939 in Herb. Mus. Sci. Tokyo.).

Distr. Honsyû.

49) **ちよりせんむかでごけ** ハ從來只一度朝鮮ヨリ報告サレ、其産地モ原記相文末尾ニ“Hab. Corea.”トアルノミノ疑問種デアツタガ、先年京都帝大理學部植物學教室ヲ訪レタ際小泉源一教授ノ好意ニ依テ同教室所藏ノ標本ヲ研究シ其ノ正體ヲ把ム事ガ出來タ。尙以下ニ記スル3種ノ *Bazzania* モ其折研究ノ機ヲ得タモノデアル。同教授ニ對シテ厚ク謝意ヲ表スル。本種ハ *B. ceylanica* (MITT.) NICHOLS. ニ最モ近ク、只葉形、腹葉等ニ依リ僅カニ區別セラレル。從ツテ將來朝鮮産ノ標本多數ヲ研究スレバ兩種ハ互ヒニ連續スル可能性ガアル。

50) **おほしまむかでごけ** ハ琉球特産デアツテ長方形ノ腹葉ヲ有スル著シイ種デアル。腹葉ノ構造其ノ他ヨリシテ *B. albicans* STEPH. ト同群ニ入ラレルモノデアルガヨリ強大デアル。本種モ未ダ圖示セラレテ居ラズ、且ツ記載モ亦原記相文アルノミデアツタ。

51) **たまごばむかでごけ** ハ本邦ノ高山乃至亞高山ニ廣ク分布シテ居ル様デアル。本種ト後出ノしたばむかでごけハ腹葉ノ細胞ガ葉細胞ト同様な構造ヲナスモノデ、前述2種ヨリ確然ト分ケル事ガ出來ル(前述2種ノ腹葉ハ薄膜透明デアル)。本種ハ卵狀ヲナス葉及ビ莖ヨリ斜メ(時ニ略々直角)ニ出、頂端ハ短4裂(裂片ハ鈍頭)スル腹葉ニ依テ特徴ヅケラレル。本種及ビ次ノしたばむかでごけモ亦原記相文ノミノ疑問種デアツタ。

52) **したばむかでごけ** ハ *B. trilobata* (L.) GRAY ニ最モ近縁ヲ有スルガヨリ小形デアリ腹葉頂端ノ切込ミモ不規則デアル。又一方前述たまごばむかでごけニモ類似スルガ、葉ハ廣舌形デ頂端廣ク、腹葉ハヨリ莖ニ接シ頂端ハ齒牙縁デアリ、植物體ハ強大デアル。

53) **たかぬほらごけもどき** (新稱) ハ *C. rigida* HORIKAWA (新高山特産) ニ似ルガ

後者ハ葉細胞小形デ細胞表面ハ平滑デアリ(記相文=“cuticula levis”トアリ)、腹葉モ小サイ。又 *C. remotifolia* NICHOLS. (in MAZZETTI, Simb. Sinic. V, 22, Abb. 8. 1930) モ本種=近イヤウデアアルガ細胞ハ遙カ=小サク cuticula =就テ特=記載ナキ故平滑ナリト判断サレル。尙本種ノ葉細胞内=ハ葉綠粒ノ外=ピンク色ノ大キイ油様體數箇宛ヲ含有シ、細胞膜及ビ角隅ハ帶黃ピンク色ヲ呈スル。種名ハ細胞表皮ノ小疣狀凸起ヲ示シ、和名ハ本種ガ本州ノ高山乃至亞高山地帯=産スル事ヨリシテ名付ケタ。

54) **みやまらうとごけ**(新稱)モ本州ノ高山=分布スル。*J. verrucosa* HORIKAWA (in Journ. Sci. Hiroshima Univ. Ser. B, Div. 2, II, 146. 1934). =最モ近イガ、後者ハヨリ小形デアリ(長サ14 mm、幅1.6 mm)、又葉細胞ノ大キサヲ比較スル=頂部=於テ直径16 $\mu$ ニシテ本新種ヨリ遙カ=小ナルモ基部37 $\times$ 26 $\mu$ ヲ算シ却ツテ稍=大トナル。又細胞角隅ノ肥大モ後者=於テ遙カ=著シク、殊=頂部、縁部=於テ然リデアアル(“Cellulae...; margine rectangulatis, trigonis fere majore, dein optime limbata.”トアリ)。本種ノ假根ハ葉ノ腹縁基部ヨリ東ヲナシテ生ズルガ次第=其附近ヨリモ生ジ初メルノデ、コノ性質ハ若イ部分=於テ最も容易=認メ得ル。尙葉細胞角隅ハ帶ピンク黄色ヲ呈シ表皮ハ密=小疣狀凸起ヲ生ズル。莖葉ハ餘リ偏側性ヲ示サズ、相當=展開スルモノモ多イ。

55) **こあみづつるうとごけ**ハ上述原記相文ノ外之=關シタ報文ガナイ疑問種デアッタガ、最近吉永虎馬氏(高知)ヨリ拜借シタ標本=依テ之ヲ明カニスル事ガ出來タ。同氏ノ好意=對シテ深く感謝スル次第デアアル。即チSTEPHANI=依テ *M. tubulosa* STEPH.ト同定サレタ手筈山産標本(吉永、no. 22 及ビ 25)ヲ研究シタ所、該材料ハ *M. tubulosa*ノ記相文ヲ満足セズ却ツテ本種ノ原記相文=全ク一致シタ。*M. tubulosa*ハ西曆1897年=發表サレタモノデアアルガ、STEPHANIハ初メ本品ヲ該種=アテ後(西曆1901年)*M. parvixata*ナル新種ヲ作り之ヲ分離シタモノカト想像サレル。

56) **うさみやすてごけ**ハ歐文ノ部=記シタ2文獻ノ他=記載文ハ勿論見ルベキ報文モナイ疑問種デアッタ。從來本州ノミ=知ラレ(確實ナル産地不明)、九州ヨリハ初メテノ記録デアアル。本種ハ相當=變化=富ム種デアツテ植物體ノ色ハ帶黃オリ=ブ色ヨリ暗赤褐色=互リ、葉ノ下片ノ大キサモ相當=動クガ、基部ガ殆ド截形ヲナシテ附屬部ノナイ莖葉、及ビ接續部ガ長ク且ツ莖ヨリ略=直角=出ル幅廣キ葉下片、及ビ倒楔形ノ基部ヨリ廣イ腎形ヲナシ頂端ハ僅カ=凹頭又ハ短2齒又ハ殆ド截形ヲナス莖腹葉=依リ容易=識別サレル。

(東京科學博物館植物學部)