

## 日本植物時報（其三）

佐竹義輔

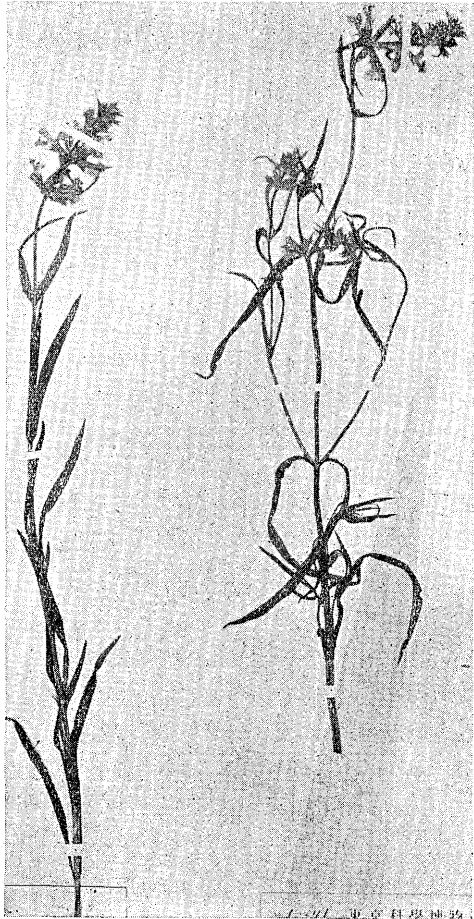
Yosisuke SATAKE: Fragmentary News from the Herbarium of the Tokyo Science Museum (III).

## 9) ひめいぬごま (新稱)

滿洲、龍江省鎮東縣興農合作社高野太郎作氏カラ寄贈サレタ標本ノ中ニいぬごまノ一種ガアツタ。葉ガ線形デ毛ガ少ナク葉柄ガナイノガ特徴デアル。シベリヤ方面カラいぬごま屬ノ種ガ相當記載サレテキルガ、ドレニモ吻合シナイヤウデアリ、標本ガ見ラレヌノデ、一應 *Stachys Takanoi* トシテ記載シテ置ク。

***Stachys Takanoi*** SATAKE, sp. nov.

Caulis tetragonus, glaber vel parcissime deorsum aculeatus, in nodis hispidus, usque 30-50 cm altus, inferiore 2 mm latus. Folia opposita, linearia, sessilia, 4-7 cm longa, medio 3-4 mm lata, apicem sensim angustata, margine integra vel remote serrulata inferne hispidula, supra glabra costis impressis, subtus glabra costis prominentibus et sursum hispidulis, inferiora sensim minora, floralia



*Stachys Takanoi* SATAKE, type × ca.  $\frac{1}{3}$

bracteaeformia vix calyce longiora. Verticillastri 4-6-florati. Flores 12-14 mm longi, brevissime pedicellati, calycibus tubulosis 10-nervatis in nervis hispidis apice profunde aequaliter 5-dentatis dentibus subulatis spinosis subdivaricatis. Corollae purpurascens, glabratae vel puberulae, calyce duplo longiores, tubis cylindricis calycibus paulo exsertis extus subglabris intus piloso-annulatis, limbis bilabiatis, labiis superioribus erectis obovato-oblongis concavis, extus et margine densius hirsutis saepe glandulosis, inferioribus patentibus trilobatis glabratis, lobo medio maximo apice rotundato lobis lateralibus oblongis. Stamina perfecta 4, subaequilonga, labio superiore aequantia, antheris 2-ocularibus oculis parallelis, filamentis medio densius ciliatis. Stylus filiformis, 1 cm longus glaber, apice bifidus, ovario 4-partito, partibus oblongis.

Nom. Jap. *Hime-inugoma* (nov.).

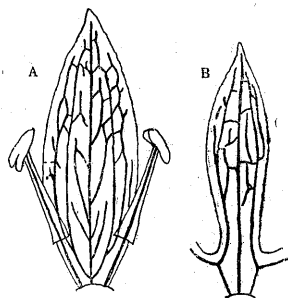
Hab. Manchukuo: prov. Lung-chiang [龍江省] Chên-tung-hsien [鎮東縣] Chiêu-t'ai [九臺] (T. TAKANO, Jul. 1940, n. 13271—type in Herb. Tokyo Sei. Mus.)—Êr-ching [二井] (T. TAKANO, Jul. 1940, n. 13272, 13273).

#### 10) まつだせんぶり (新稱)

とうざんせんぶり (*Swertia tozanensis* HAYATA) = 似テ、葉ガ狭ク先端尖リ、花ガ大形デ、萼ノ裂片ハ網狀脈ヲ有スルノデ新種ト考ヘル。松田英二氏ガ能高山デ採ラレタノガ基準標品デ *Swertia Matsudai* HAYATA (未發表) トシテ東大、腊葉庫 = 所藏サレテ居ル。

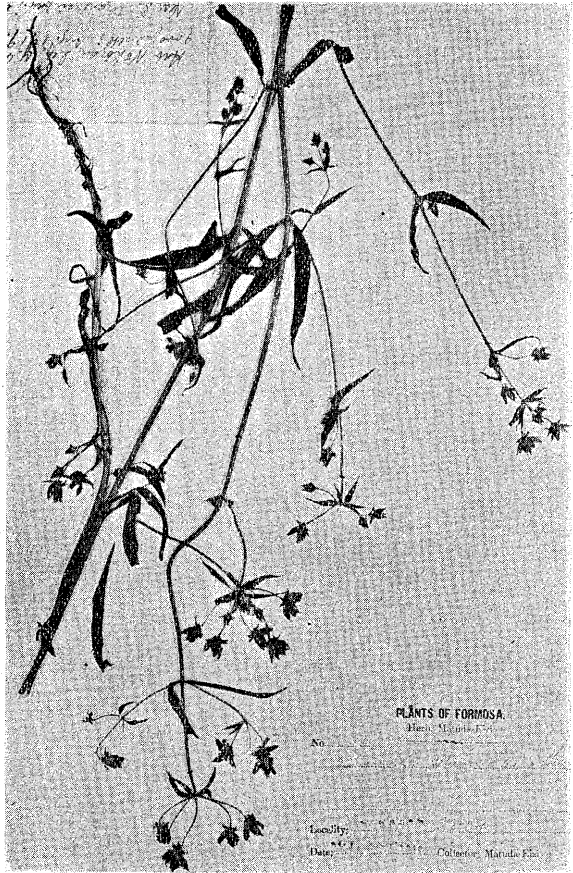
***Swertia Matsudai*** HAYATA in schedl.

Herba erecta, annua? usque 80 cm alta. Caulis glaber, subteres, leviter 4-striatus, 2.5 mm in diametro. Folia opposita, petiolata vel sessilia, lanceolata vel lanceolato-linearata, cum petiolis 3-6 cm longa, 4-7 mm lata, inferiora basi longe attenuata, superiora sessilia, apice acuta vel acutissima, leviter curvata, glabra, 3-nervata, venulis reticulatis. Flores terminales vel axillares, racemosi, racemis paucifloratis, pedicellis 1.5-2 mm longis, striatis. Calyx 5-partitus segmentis ovato-lanceolatis vel lanceolatis, apice acuminatis,



*Swertia Matsudai* HAY.  
A. Petal  $\times 5$ . B. Sepal  $\times 6$ .

4-5 mm longis, 1 mm latis, 3-nervatis, venulis apicem anastomosis, nervis lateralibus basi connatis, tubo 1 mm longo. Corolla rotata, profunde 5-lobata, lobis oblongis apice acutis, margine leviter undulatis, usque 7.5 mm longis, 3 mm latis, 5-nervatis, venulis anastomosis, prope marginem medio 2-maculatis, maculis orbiculari-ellipticis, glabris, tubo 1.5 mm longo. Stamina 5, tubi apicem affixa, filamentis complanatis 3 mm longis, antheris oblongis 1.5-2 mm longis apice acutis basi 2-lobatis. Ovarium oblongum, 5-6 mm longum, apice



*Swertia Matsudai* HAYATA, type  $\times$  ca.  $\frac{1}{2}$

attenuatum, stigmatibus 2-fido, sessili. Capsula et semina ignota.

Nom. Jap. *Matuda-senburi* (nov.).

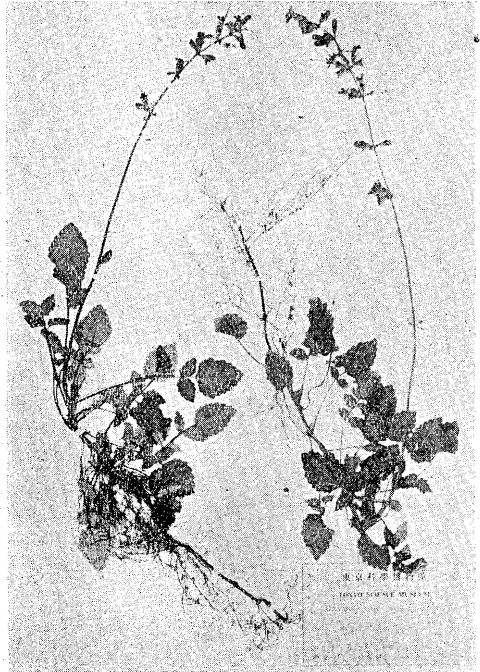
Hab. Taiwan: in monte Nokoazan (E. MATUDA, Aug. 1919—type in Herb. Tokyo Imp. Univ.).

#### 11) はひたむらさう (新稱)

たじまたむらさう (*Salvia omerocalyx* HAYATA) = 近イガ、莖ノ下部長ク地上ニ臥シ、短絨毛密生シ、雄蕊ノ葯隔ノ基部ニ毛ヲ有スルノデ其變種ト認メタ。越前黒河國有林内デ田代善太郎氏ガ採集サレタモノデアル。

**Salvia omerocalyx** HAYATA var. **prostrata** SATAKE, var. nov.

Caulis basi longe prostratus in nodis radicans et foliatus densius hirtellus, superiore erectus scapiformis dense pubescens pilis raro glanduligeris. Folia 7-11 cm longa, longe petiolata, petiolis dense hirtellis 3-6 cm longis supra sulcatis, laminis 3-5-pinnatisectis, foliolo terminali petiolulatis ovato 2-3 cm longo 1.5-2.5 cm lato apice obtuso basi rotundato vel truncato margine 5-7-crenato supra glabro vel scabrido subtus glabro glanduloso-punctato in nervis hirtello, foliolis lateralibus multo minoribus oblongis basi cuneatis breve petiolulatis; petioluli et rachis dense hirtelli. Scapi obtusotetragoni, 25-35 cm longi dense



*Salvia omerocalyx* var. *prostrata* SATAKE,  
type  $\times$  ca.  $\frac{1}{2}$ .

pubescentes pilis raro glandulosis. Verticillastri remoti, 4-6-florati, bracteis minutis oblongo-ovatis dense pubescentibus. Flores patento-ascendentes breve pedicellati, pedicellis ad 2 mm longis dense pubescentibus. Calyx tubuloso-campanulatus, 6-7 mm longus, bilabiatus, extus pubescens, labio superiore integro vel apice ad summum brevissime 3-dentato, 5-nervato, labio inferiore apice 2-dentato, dentibus deltoideis acuminatis. Corolla calyce duplo longior, tubo incluso vel subexerto intus medio piloso-annulato, limbo bilabiato, labio superiore erecto, oblongo, inferiore majore patento 3-lobato, lobo medio late obovato apice retuso, lobis lateralibus oblongis, extus albo-hirsuto. Stamina inferiora perfecta 2; filamenta 2.5-3 mm longa, connectivis basi pilosis apicem glabris, superioribus 9 mm longis labiis longe superantibus apice loculiferis loculis oblongis 2.5 mm longis, inferioribus 2.5 mm longis sterilibus. Stami-

nodia 2, superiora, filiformia ad 1 mm longa. Stylus filiformis 20 mm longus glaber, ovario glabro 4-partito, partibus oblongis glabris.

Nom. Jap. *Hai-tamuraō* (nov.).

Hab. Honsyū: prov. Etizen, Kurokawa (Z. TASIRO, June 9, 1936, n. 5676 —type in Herb. Tokyo Sci. Mus.).

Near to *Salvia omerocalyx* HAYATA, but differs from it in having prostrate stem and pilose connectives.

12) にひたかそくしんらん (新稱)

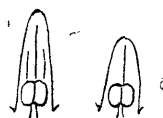
昭和16年10月27日新高山デ採集シタモノデ、そくしんらん=似テ、花ガ小形、花冠裂片ハ卵狀長橢圓形デ葯ヨリ2倍半長ク、根生葉ノ細イモノデアアル。

***Aletris spicata*** FRANCHET var. ***micrantha*** SATAKE, var. nov.

A typo differt floribus minoribus segmentis perianthii ovato-oblongis antheris 2.5-plo longioribus, trinervatis, nervis lateralibus fere indistinctis, foliis radicalibus fere linearibus trinervatis ad 25 mm latis.

Nom. Jap. *Niitaka-sokusinran* (nov.).

Hab. Taiwan: prov. Tainan, in monte Niitaka (R. IMAZEKI et Y. SATAKE, Oct. 27, 1940, —type in Herb. Tokyo Sci. Mus.).



A B  
A. *Aletris spicata*  
B. var. *micrantha*  
(花冠裂片ノ比較)

13) あをひえぼすげ (新稱)

ひえぼすげ=似テ囊果ガ綠色デ、光澤ノナイモノデアアル。臺灣、臺中州八仙山デ採集シタモノデアアル。

***Carex baccans*** NEES var. ***pallida*** SATAKE, var. nov.

Utriculis triquetet ovato-obovatis pallidis, nec purpureo-ferrugineis nec nitidis.

Nom. Jap. *Ao-hiebosuge* (nov.).

Hab. Taiwan: prov. Taityū, mt. Hassenzan (R. IMAZEKI & Y. SATAKE, Oct. 22, 1940 —type in Herb. Tokyo Sci. Mus.).