

## Observationes ad Plantas Asiae Orientalis (XX).\*

Hiroschi HARA.

原 寛: 東亞植物考 (其二十)

124) **Conioselinum nipponicum** HARA, sp. nov.

*C. univittatum* (non TURCZ.) sensu MAXIMOWICZ in Mém. Biol. IX, 251 in adnota (1873) pro parte—YABE, Rev. Umbel. Jap. in Journ. Coll. Sc. Imp. Univ. Tokyo XVI, Art. 4, 72, pl. II, fig. 42 (1902)—MATSUMURA, Ind. Pl. Jap. II-2, 433 (1912) excl. pl. Simsii—HARA in Bot. Mag. Tokyo L, 369 (1935).

Rhizoma crassum. Caulis erectus 40–80 cm altus striatus glaber. Folia glabra; petiolus foliorum inferiorum mediorumque longus basi vaginato-dilatatus, foliorum superiorum inflato-vaginatius; lamina ambitu triangularis 3-ternato-pinnatifida tenuis; lobis primariis longe petiolulatis terminalibus ambitu triangularibus lateralibus ambitu ovato-triangularibus apice longe acuminato-attenuatis ternatis, lobis secundariis terminalibus petiolulatis lateralibus breviter petiolulatis pinnatis, pinnulis inferioribus sessilibus superioribus basi ad rachem cuneatim decurrentibus omnibus oblongis vel anguste ovatis apice longe attenuatis pinnatifidis, lobis pinnatifidis vel laciniato-serratis, laciniis ultimis oblongis acuminatis. Bractee involucrales nullae vel paucae lineari-lanceolatae margine albo-scariosae ad

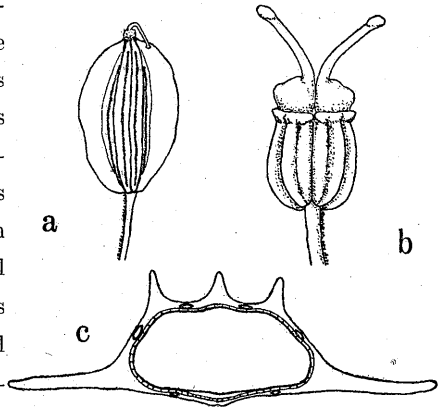


Fig. 52. みやませんきう

a. 果實 (×4). b. 雌蕊 (×12).

c. 分果ノ横断面 (×15).

\* Contribution from the Laboratory of Systematic Botany (Prof. T. NAKAI) of the Botanical Institute, Faculty of Science, Tokyo Imperial University.

The expence of this research was partly defrayed from the Scientific Research Expenditure of the Department of Education.

[Journ. Japan. Bot. XVII, no. 11, Nov. 1941]

2 cm longae. Radii 13-25 intus minute papilloso usque ad 4.5 cm longi in fructu ad 7 cm longi. Bractee involuclatae ca. 10 subulato-lineares margine anguste scariosae saepe floris superantes ad 1.5 cm longae. Umbellulae multiflorae. Pedicelli graciles intus scabri usque ad 1 cm longi. Ovaria ovoidea glabra sub anthesin 0.6-1 mm longa. Calycis dentes obsoleti vel minuti breviter triangulares. Petala alba obcordata intus medio costata apice inflexa longe acuminata basi breviter unguiculata 1.5-2 mm longa ac lata. Filamenta subulata alba ca. 2.5 mm longa apice primo inflexa; antherae primo 0.5 mm longae olivaceo-brunneae demum atrobunneae. Stylopodium evolutum globoso-conicum 0.4-0.5 mm altum. Styli ad 1-1.5 mm longi albi, stigmatibus minuto capitato. Fructus elliptici interdum inaequales a dorso compressi glabri 3.5-5 mm longi 2.5-3.5 mm lati; juga lateralia late alata 0.6-1 mm lata jugis dorsalibus 3-4 plo latiora, juga dorsalia anguste alata; vittae valleculae solitariae, commisurae utrinque 1 raro 2.

Nom. Jap. *Miyama-senkyū*.

Hab. Kuriles. Ins. Etorohu: Syamanbé (K. KONDO, Jul. 14-5, 1927).

Hokkaido. Prov. Kitami: mt. Syari-dake (H. HARA, Aug. 10, 1931). Prov. Isikari: mt. Daisetū (T. NAKAI, Aug. 1928; H. HARA, Aug. 17, 1931); Sōunkyō (T. NAKAI, Aug. 1928; H. HARA, Aug. 16, 1931); secus fl. Toyohira, Sapporo (MATSUMURA, Aug. 9, 1899; T. NAKANO, Aug. 1892); mt. Yūbari (G. KOIDZUMI, Aug. 1916). Prov. Hidaka: Samani-sandō (TOKUBUCHI, Aug. 22, 1892); mt. Apoi (T. NAKAI, Aug. 1928; H. HARA, Aug. 11 & 28, 1933).

Honsyū. Prov. Mutu: mt. Iwaki (S. TAMAKI, Aug. 4, 1914; S. SAITO, Sept. 5, 1927). Prov. Rikutyū: Kuzakai (G. TOBA, no. 639, Jun. 20, 1931—typus); mt. Hayatine (S. SAITO, Aug. 24, 1923); mt. Sukawa (S. SAITO, Aug. 31, 1927). Prov. Iwaki: mt. Asahi-dake (T. SAITO, Aug. 26, 1936); mt. Azumasan (G. NAKAHARA, Aug. 30, 1904); Ose-numa (G. NAKAHARA, Aug. 20, 1904). Prov. Simotuke: mt. Sirane (leg. ?, Sept. 30, 1879); Konsei-tōge, Nikkō (MATSUMURA, Oct. 3, 1895); Sirasugahara, Nikkō (H. ITŌ, 1931); Tadenoumi, Nikkō (MATSUMURA, Oct. 4, 1895). Prov. Kai: Daibosatu-tōge (T. KOSAKA, Sept. 4, 1936). Prov. Sinano: mt. Asama (T. ODAI, Aug. 1940); mt. Ontake (J. NIKAI, no. 2192, Aug. 13, 1911), inter Norikura et Kaminotanbo (K. HISAUTI, no. 1790, Aug. 22, 1936). Prov. Etyū: mt. Tateyama

(leg. ?, Aug. 1916).

Dist. S. Kuriles, Hokkaido et Honsyu.

This plant is characterized in having thin leaves with long-acuminate pinules, well-developed stylopodium, broad lateral wings of fruits and solitary vallecular vitta.

125) **Primula Kawasimae** HARA, sp. nov. (Sect. Farinosae).

*P. borealis* (non DUBY) sensu MIYABE et TATEWAKI in Trans. Sapporo Nat. Hist. Soc. XIV, 78 (1935)—SUGAWARA, Ill. Fl. Saghal. IV, 1520 & 1521 (1940).

Folia efarinosa; radicalia exteriora anguste obovata vel oblonga margine minute serrata basi ad petiolem ca. 2 mm latum transientia 8–12 mm longa 2–4.5 mm lata; interiora angustiora oblonga vel lineari-oblonga obtusa vel acutiusecula margine eroso-denticulata interdum pauce laciniato-dentata basi ad petiolem angustioremsensim cuneato-attenuata cum petiolo 1.5–3 cm longa 2.5–6 mm lata. Scapus gracilis 3–10 cm longus efarinosus 1–3-floris. Bractee subulato-lanceolatae pedicello multo breviores 2–5 mm longae, basi dilatatae 0.5–1.3 mm latae vulgo haud saccatae fere efarinosae. Pedicelli graciles 6–9 mm longi glabri. Calyces turbinato-campanulati 3–5 mm longi 2.5–3 mm crassi saepe fusco-purpurascetes fere efarinosi basi haud saccati ad medium 5-fidi in fructu 4.5–6 mm longi; lobi lanceolati vel oblongo-lanceolati breviter acuti 2–2.8 mm longi ca. 1 mm lati. Corollae lilacinae, oculo luteo, ad 1.5 cm in diametro; tubus calyce longior 6–7 mm longus; lobi obovati apice ad 1/3 bifida basi cuneato-angustati 4–5 mm lati. Stigma floris feminei vel apices antherae floris masculi fauce corollae paullo exserta. Capsulae cylindricae calyce aequilongae vel paullo exsertae 4–5.5 mm longae.

Nom. Jap. *Kawasima-kozakura* (MIYABE et TATEWAKI, 1935).

Hab. Sachalin. Distr. Sikka: in monte Kawasima-yama, Tirie-gun (TATEWAKI & TAKAHASHI, no. 22724, Jun. 21, 1936—typus in Hb. Tokyo et Hb. Hokkaido Imp. Univ.; no. 22779, Jun. 23, 1936); *ibid.* (S. SUGAWARA Aug. 3, 1935 in Hb. Hokk. Imp. Univ.); Tirikoro (M. KAWASIMA, Jun. 16, 1935 in Hb. Hokk. Imp. Univ.); Hunadomari (M. KAWASIMA, Jul. 16, 1935 in Hb. Hokk. Imp. Univ.).

f. **albiflora** (TATEW.) HARA, f. nov.

*P. borealis* f. *albiflora* TATEWAKI, in sched. Hb. Hokk. Imp. Univ.

Corollae albae.

Nom. Jap. *Sirobana-kawasima-kozakura* (nom. nov.).

Hab. Sachalin. Distr. Sikka: in monte Kawasima-yama (TATEWAKI & TAKAHASHI, no. 22780, Jun. 23, 1936—typus in Hb. Hokk. Imp. Univ.).

This plant differs from *P. borealis* DUBY by having narrower and distinctly serrate leaves which are gradually attenuate to the petiole, and bracts and calyces less saccate at the base.

*P. mistassinica* MICHAUX of N. America is very near to this species, but has less conspicuously serrate leaves, and long-exserted capsules.

126) **Apocynum Basikurumon** HARA, sp. nov. (Sect. Veneti).

*A. venetum* (non L.) sensu MAKINO in Bot. Mag. Tokyo XX, 90 (1906)—MATSUMURA, Ind. Pl. Jap. II-2, 506 (1912)—MIYABE et KUDO in Trans. Sapporo Nat. Hist. Soc. IX-1, 67 (1924).

*A. venetum* L. var. *Basikurumon* HARA, mss.

Rhizoma crassum. Caulis 25–80 cm altus erectus rubescens glaber ramosus, ramis divaricato-ascendentibus vulgo alternatis. Folia caulis primarii vulgo subalternata, ramorum subopposita, petiolis 1–4 mm longis, oblonga vel anguste oblonga apice rotundata vel obtusa mucronulata basi late cuneata vel subrotundata margine denticulato-scabra 2–5 cm longa, 7–15 mm lata glabra. Inflorescentia terminalis paniculata. Bracteae lineari-lanceolatae caducae. Pedicelli ad apicem parce minute pilosi. Calycis tubi minute pilosi; lobi ovato-oblongi breviter acuti 1.8–2 mm longi ca. 0.7 mm lati extus minutissime pilosi margine parce ciliolati. Corollae purpureo-rubrae 6–7.5 mm longae extus minutissime papillosae; tubus anguste campanulatus apice ca. 2.5 mm in diametro intus basi appendicibus 5 triangulatis acuminatis praeditus; lobi elliptici apice rotundati 3–3.4 mm longi. Stamina tubo corollae breviora ca. 3 mm longa; filamenta ca. 1.3 mm longa intus parcesissime pilosa; antherae basi sagittatae, auriculis paullo conniventibus; connectiva apice acutissima. Discus perigynus 5-lobatus. Ovaria fere glabra; stigma fusi-forme.

Nom. Jap. *Basikurumon* (nom. vernæ. Ainu), Osyoro-sô (MIYABE et KUDO 1924).

Typus. Hokkaido. Prov. Siribesi: Kabuto-iwa, Osyoro (H. HARA, Jul. 22, 1941).

*A. Basikurumon* is the eastern-most representative of *A. venetum*-group. It differs from the plants of this group in Korea, Manchuria and China by having nearly glabrous ovaries, sparsely hairy pedicels and oblong calyx-lobes which are sparsely ciliate.

I can not approve of WOODSON's opinion that *A. venetum* L. should be regarded as a separate genus, *Trachomitum*, from *Apocynum* which is represented by *A. cannabinum* L.

127) **Trigonotis Nakaii** HARA, sp. nov. (Sect. Radicantes).

?*Omphalodes sericea* (non MAXIM.) sensu PALIBIN, Consp. Fl. Korea. II, 15 (1900)—MORI, Enum. Pl. Corea. 297 (1922).

?*Eritrichium radicans* (non DC.) sensu PALIBIN, l. c. 16 (1900).

*Trigonotis radicans* (non GÜRKE nec MAXIM.) sensu KOMAROV, Fl. Mansh. III, 325 (1905) pro parte—NAKAI, Fl. Korea. II, 106 (1911) pro major. part.; Rep. Veg. Chiisan 43 (1915); in Bot. Mag. Tokyo XXXI, 217 (1917) pro major. part.; Rep. Veg. Diamond Mts. 183 (1918); Fl. Sylv. Korea. XIV, 18 (1923) pro major. part.—MORI, l. c. 298 (1922)—OHWI in Acta Phyto. et Geobot. VI, 116 (1937)—KITAGAWA, Lineam. Fl. Mansh. 373 (1939).

?*Omphalodes sericea* MAXIM. var. *koreana* BRAND in ENGLER, Pfl.-reich IV-252, Ht. 78, 105 (1921).

Perennis. Caulis ascendens 15-40 cm altus glabrescens pilis adpressis parcissime conspersus, post anthesin apice elongatus decumbens radicans atque ramos axillares elongatos emittens. Folia radicalia longe petiolata; petioli ad 8 cm longi glabrescentes basi dilatati; laminae late ovatae apice rotundatae vel obtusae breviter mucronulatae basi rotundato-cordatae utrinque pilis adpressis obtectae 1.5-5 cm longae 1-2.8 cm latae, aestate vel autumno saepe magnae; folia caulina inferiora radicalibus similia late ovata, ovata vel oblongo-ovata saepe acutiuscula, superiora sensim minora oblongo-ovata vel ovato-lanceolata acuta basi rotundata breviter petiolata. Inflorescentiae

foliatae laxae. Flores extra-axillares. Pedicelli erecto-patentes graciles ad 2 cm longi adpresse strigoso-pilosi. Calyces 5-fidi adpresse strigoso-pilosi; lobi oblongo-lanceolati acutiusculi 3-4 mm longi 1.2-1.5 mm lati. Corollae caerulescentes 8-13 mm in diametro; tubi 1.5-1.8 mm longi intus basi barbati; lobi patentes rotundato-obovati usque ad 5 mm longi 4.5 mm lati; fornices crassi trapeziformes apice leviter emarginati. Stamina 5, supra medio tubi inserta; filamenta brevissima; antherae oblongae ca. 0.8 mm longae. Stylus 1 mm longus glaber, stigmatibus capitato. Nuculae tetragonae stipitatae minute pilosae; facies superior triangulari-ovata apice acuminata ca. 2.5 mm longa.

Nom. Jap. *Tyôsen-kamebasô* (NAKAI 1917), *Ô-kamebasô* (NAKAI 1915).

Hab. Kyusyu. Prov. Higo: Kozyô-mura, Aso-gun (H. KÔZUMA, Mai. 29, 1927).

Korea. Prov. Keinan: mt. Tiisan (T. NAKAI, Jun. 30, 1913; T. MORI, Aug. 1912). Prov. Zennan: mt. Hakuyôzan (T. NAKAI, Mai. 3, 1913, fl.). Prov. Keiki: Hokukanzan (T. MORI, Mai. 16, 1910, fl.—typus; K. Jô, Mai. 5, 1912, fl.); Nanzan, Keizyô (K. Jô, Mai. 21, 1911, fl.; N. OKADA, Jun. 3, 1909, fl.; T. UCHIYAMA, Jul. 18, 1902); Kôryô (T. NAKAI, Apr. 26, ?, fl.). Prov. Kôgen: mt. Kongô (T. UCHIYAMA, Aug. 18, 1902); Uti-kongô (M. KOBAYASI, Aug. 2, 1932). Prov. Kôkai: Tyôzankan (T. NAKAI, no. 13395, Aug. 6, 1929). Prov. Heinan: Heizyô (T. UCHIYAMA, Sept. 12, 1902). Prov. Heihoku: Hakuhekizan (T. ISIDOYA, Jun. 25, 1912, fl.). Prov. Kannan: Unsenrei (T. NAKAI, no. 15657, Aug. 16, 1935, fr.).

Manshuria. Antô (M. KITAGAWA, Mai. 21, 1932, fl.); Kikaho (M. KITAGAWA, Jun. 8, 1932, fl.).

This species differs from *T. radicans* (TURCZ.) STEVEN by having adpressed hairs on all parts of the plant.

I have named this plant in honour of Prof. T. NAKAI who published the detailed revision of Japanese species of this genus in 1917.

*Omphalodes aquaticica* BRAND (1915) was based on the same specimen from Korea, FAURIE no. 349, as the type of *Trigonotis sericea* OHWI (1936) which is identical with *T. radicans*. But the specimen, 'Soul (GOTTSCHÉ)', cited by BRAND at the same place may belong to *T. Nakaii* HARA.

128) **Trigonotis radicans** (TURCZ.) STEVEN in Bull. Soc. Nat. Moscou XXIV-1, 603 (1851).

*Myosotis radicans* TURCZANINOW in Bull. Soc. Nat. Moscou XI-1, 97 (1838) nom. nud.; XIII, 258 (1840).

*Eritrichium radicans* (TURCZ.) DC., Prodr. X, 128 (1846)—LEDEBOUR, Fl. Ross. III, 154 (1847)—TURCZANINOW, l. c. XXIII-1, 516 (1850)—TRAUTVETTER et MEYER, Fl. Ochot. 70 (1856)—MAXIMOWICZ, Prim. Fl. Amur. 203 (1859)—REGEL, Tent. Fl. Ussur. 107, t. IX, f. 4-8 (1861)—MAXIMOWICZ in Bull. Acad. Sc. St.-Pétersb. XVII, 448 (1872)—HERDER in Ac. Hort. Petrop. I, 544 (1873).

*Trigonotis radicans* (DC.) MAXIMOWICZ in Mém. Biol. XI, 273 in nota (1881); in Bull. Acad. Sc. St.-Pétersb. XXVII, 506 in nota (1882)—NAKAI, Fl. Korea. II, 106 (1911) pro minor. part.

*Trigonotis radicans* DC. ex GÜRKE in ENGLER, Pfl.-fam. IV-3a, 121 (1897)—KOMAROV, Fl. Mansh. III, 325 (1905) pro parte.

*Omphalodes aquatica* BRAND in FEDDE, Rep. Sp. Nov. XIII, 545 (1915); in ENGLER, Pfl.-reich IV-252, Ht. 78, 110 (1921).

*Trigonotis sericea* OHWI in Journ. Jap. Bot. XII, 328 (1936); in Acta Phyt. et Geobot. VI, 117 (1937)—KITAGAWA, Lineam. Fl. Mansh. 373 (1939).

Nom. Jap. *Ke-rurisô* (YABE, 1912); *Hai-kamebasô* (YABE, 1912, pro syn.); *Tairin-kamebasô* (OHWI 1936).

Specim. Exam. E. Dauria: ad fl. Argun (TURCZANINOW in Gray Herb.); Amur (MAXIMOWICZ in Gray Herb.); Primorskaja: prope urb. Wladiwostok (Herb. Fl. Ross. no. 2362 in Gray Herb.).

Korea. Prov. Kannan: Tinganhô (T. NAKAI, Jun. 11, 1909).

Dist. E. Dauria, Amur, Ussuri, Ochotsk, Manshuria, Korea et Kyusyu.

var. **sericea** (MAXIM.) HARA, comb. nov.

*Omphalodes sericea* MAXIMOWICZ in Bull. Acad. Sc. St.-Pétersb. XVII, 453 (1872)—FRANCHET et SAVATIER, Enum. Pl. Jap. I, 337 (1875)—MATSUMURA, Ind. Pl. Jap. II-2, 527 (1912)—BRAND, l. c. 104 (1921).

*Trigonotis sericea* (MAXIM.) JOHNSTON in Journ. Arnold Arbor. XVIII, 25 (1937).

Nom. Jap. *Kinuge-kamebasô* (nom. nov.).

Hab. Kyusyu. Prov. Bungo: Kundsho-san (MAXIMOWICZ, Iter sec. 1863, fl.—isotypus in Gray Herb.). Prov. Higo: Koikeno, Namino-mura, Aso-gun (Z. TASIRO, Aug. 12, 1926, no. 39172, 39173 & 51705 in Mus. Sci. Tokyo).

129) **Symplocarpus foetidus** (L.) NUTTALL, Gen. N. Amer. Pl. I, 106 (1818) (ut *foetida*)—HOOKER in Bot. Mag. t. 3224 (1833)—KUNTH, Enum. Pl. III, 84 (1841)—SCHOTT, Gen. Aroid. t. 90 (1858); Prodr. Aroid. 420 (1860)—ENGLER in DC., Monogr. Phan. II, 212 (1879)—KRAUSE in ENGLER. Pfl.-reich IV-23 B, 151, f. 2 (1908)—MARIE-VICTORIN in Contr. Lab. Bot. Univ. Montréal No. 19, 31, f. 10-12, 14-19 (1931), Fl. Laurent. 844, f. 321 (1935).

*Dracontium foetidum* L., Sp. Pl. ed. 1, 967 (1753).

*Pothos foetidus* (L.) MICHAUX, Fl. Bor.-Amer. II, 186 (1803).

*Spathyema foetida* (L.) RAFINESQUE, Med. Rep. Hex. 2, V, 352 (1808)—BRITTON & BROWN, Ill. Fl. U. S. & Canad. I, 363, f. 881 (1896); ed., 2, 445, f. 1117 (1913)—HOUSE, Wild Fl. N. Y. I, 41, pl. 5 (1923).

*Pothos Putorii* BARTON, Fl. Virg. 60 (1812).

*Ictodes foetidus* (L.) BIGELOW, Amer. Med. Bot. II, 41, t. 24 (1818).

var. **latissimus** (MAKINO) HARA, var. nov.

*Symplocarpus foetidus* (non SALISBURY) sensu MAXIMOWICZ, Prim. Fl. Amur. 266 (1859)—MIQUEL, Ann. Mus. Bot. Lugd.-Bat. II, 202 (1866)—FR. SCHMIDT, Reis. Amur.

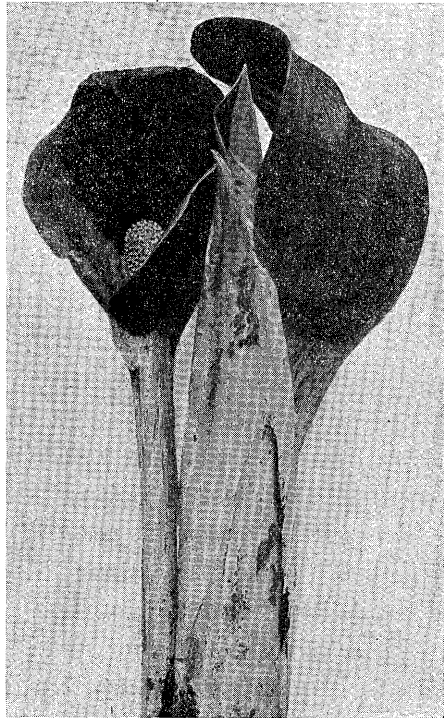


Fig. 53. ざぜんさう  
*Symplocarpus foetidus* NUTTALL  
var. *latissimus* HARA.



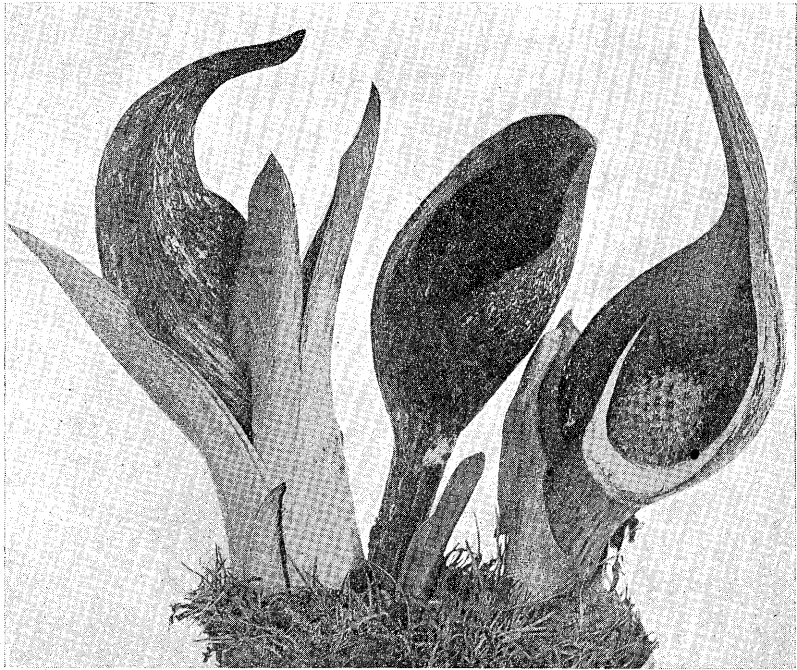


Fig. 54. あめりかざんせんきう、右端ノ花ハ佛紹苞ノ一部ヲ切り去リ、  
肉穂花序ヲ示シタモノ

*Symplocarpus foetidus* (L.) NUTTALL  
(HOUSE, Wild Fl. N. Y. I, pl. 5 = ヌル).

u. Sachal. 178 (1868)—FRANCHET et SAVATIER, Enum. Pl. Jap. II, 9 (1876)—  
ENGLER, l. c. (1879) quoad pl. asia.—KOMAROV, Fl. Mansh. I, 413 (1901);  
III, 810 (1907)—MATSUMURA, Ind. Pl. Jap. II-1, 173 (1905)—KRAUSE, l. c.  
(1908) quoad pl. asia.—KOIDZUMI in Journ. Coll. Sc. Imp. Univ. Tokyo  
XXVII, Art. 13, 30 (1910)—MIYABE et MIYAKE, Fl. Saghal. 502 (1915)—  
KUDO, Rep. Veg. N. Saghal. 77 (1924)—SEKIMOTO in Journ. Jap. Bot. VI,  
(322)—(328) (1929) cum phot.—KOMAROV et KLOB.-ALISOVA, Key Pl. Far  
East. Reg. USSR. I, 330, t. 100. 2 & 101. 1 (1931)—MIYABE et KUDO, Fl.  
Hokk. & Saghal. III, 280 (1932)—TERAZAKI, Nippon-syokubutu-zuhu fig. 421,  
422 (1933)—KUSENEVA in Fl. URSS. III, 481, t. 26. 2 (1935)—HARA in Bot.  
Mag. Tokyo LII, 399 (1938).

*Symplocarpus renifolius* SCHÖTT ex MIQUEL, l. c. (1866) in nota, nom.

provisor.

*Spathyema foetida* f. *latissima* MAKINO in Zissai-engei XXVI-6, 574 (1940) in jap.; Ill. Fl. Nippon 778, f. 2334 (1940) in jap.

*Symplocarpus foetidus* f. *latissima* MAKINO, 11. cc. (1940) pro syn.

Spathae sub anthesi late apertae leviter convolutae ad apicem sensim attenuatae apice inflexae. Folia rotundato-cordata—cordata basi profunde cordata. Planta minus foetida.

Nom. Jap. *Zazensô*.

Typus. Honsyu. Prov. Simotuke: Iwasaki, Otiai-mura (H. HARA, Mar. 30, 1941).

Dist. Honsyu, Hokkaido, S. Kuriles, Sachalin, Korea, Ussuri et Amur.

During the spring of 1939 and 1940 I had opportunities for observing the 'Skunk Cabbage' in the field in Massachusetts, U.S.A., and I secured a range of specimens preserved in alcohol as well as in the dried state. This spring I have collected the corresponding plant in Simotuke Province of Honsyu, and a careful comparison with my American materials convinces me that the two races agree perfectly in such floral characters as spadix, perianths, stamens and pistils, and that they therefore belong to the same species. Among the differences which I have noted in the Japanese plant are a more open spathe tapering gradually towards the apex and less inrolled at the margin, broad leaves deeply cordate at the base, and a less pronounced fetid odour.

Taking into consideration the extensive and interrupted geographical distribution, I conclude that the Asiatic plant should properly be treated as a variety of the American.

The Japanese plant is especially variable in the size and colour of the inflorescence, the peduncles being 7 to 20 cm long, and the spathe 8 to 20 cm long, 5 to 12 cm in diameter, in colour blackish-red-purple (f. *purpureospatha* MAKINO), or light yellow with dark purple spots (f. *maculatospatha* MAKINO), or rarely pale green without any purple markings (f. *viridispatha* MAKINO).

124) みやまぜんきり 日本ノ植物 = *Conioselinum univittatum* TURCZ. ノ學名ヲ最初ニ用ヒタノハ MAXIMOWICZ (1873) 氏デアル。併シ彼ハコノ時 *C. univittatum* ガ日

本北部=屢ミアリ、箱根=迄分布シテキルト述ベタダケデ、みやませんきうヲ指シタカドウカ頗ル疑問デアル。殊ニみやませんきうハ箱根ニハ産シナイシ、又 MAXIMOWICZ 氏自身函館ヲ採集シタからふとにんじんノ標本ニモ *C. univittatum* ト手書シテキルカラ、少クトモ數種ノ混合デアル。ソレガ矢部博士ノ Rev. Umbel. Jap. 以後みやませんきうニ *C. univittatum* ノ學名ガ當テラレ今日ニ及ンデキル。*C. univittatum* TURCZ. ノ學名ニ最初ニ記載ガツケラレタノハ Bulletin de la Société Impériale des naturalistes de Moscou XVII, 735 (1844) デバイカル地方ノ植物ニ基イテキル。TURCZANINOW 氏ヤ LEDEBOUR 氏ハ果實ノ油管ノ數以外ハ歐洲ノ *C. Gmelini* (BRAY) STEUD. (*C. Fischeri* WIMM. et GRAB.) ト大差ナイ事ヲ認メテキルガ、みやませんきうハ *C. Gmelini* ヨリ葉羽片ノ先端ガ長ク尖リ花柱基ハ著シク隆起シ果實ノ側翼ハ背面ノ翼ヨリ遙カニ幅廣ク葉ノ切レ方モアライノガ普通デアル。又みやませんきうノ類似品ハ朝鮮、滿洲、沿海州、樺太等ニ産セズ、ソノ分布區域ハ全ク孤立シテキテ、バイカル産ト同一トハ考ヘラレナイノデ、ココニ新種トシテ *C. nipponicum* HARA ト命名スル。千島(ウルupp、擇捉島)、北海道(利尻島、禮文島、北見、釧路、十勝、石狩、日高、膽振、後志)、本州北中部ノ山地ニ産シ、葉形ハ變化シ小羽片ノ疎密、終裂片ノ缺刻ノ深淺等ニヨリ可成リ異ツテ見エル形ガアル。樺太、千島、北海道、本州北部ノ海岸ニ生ズル同屬ノからふとにんじん (*C. kamtschaticum* RUPR.) ハ本種ニ比シ、丈低ク強壯、葉質稍厚ク、葉羽片先端ハ短カク尖リ、繖梗太ク、子房ハ大、果實モ細長ク背面ノ翼ノ發達ガヨイ、又北米ノ *C. Benthami* (WATS.) FERNALD モからふとにんじんニ近イモノデみやませんきうトハ異ナル。

125) **かはしまごぞくら** シベリヤ東部、アラスカノ寒地ニ産スル *Primula borealis* DUBY ニ近イガ、葉形ヲ異ニシ、葉縁ノ鋸齒モ顯著デアリ、小苞ヤ萼ノ基部ガ囊狀ニ膨ラム事ハ少ナイ。又北米ノ *P. mistassinica* MICHAX にも似テキルガ、葉縁ノ鋸齒著シク、蒴果ガ短カイ點ヲ區別サレノデ、新種トシテ *P. Kawasimae* HARA ノ學名ヲ與ヘル。

126) **ばしくるもん** (おしよろさう)。歐亞大陸ニ分布スル *Apocynum venetum* 分布ノ最東端ニアル形デアル。朝鮮、滿洲、支那産ノモノハばしくるもんト異ナリ、子房ニ密毛ガアリ、小花梗ニモ毛多ク、萼裂片ハ概ネ短カク卵形、小縁毛ヲ有スル。ばしくるもんハ常ニ海岸ニ産シ、北海道デハ今迄ニ後志、<sup>オシヨロ</sup>石狩、<sup>マシケ</sup>濱増毛及ビ奥尻島ニ知ラレ、本州越後彌彦山麓ノモノハ未ダ花ノアル標本ヲ見ナイノデ確カデナイ。又 MIQUEL 氏ヤ FRANCHET, SAVATIER 兩氏ガ引用シタ伊藤圭介翁ノ標本モ本種カ否カ明カデナイ。

127-28) **てうせんかめばさう・けるりさう** (たいりんかめばさう)。てうせんかめばさうハ今迄 *Trigonotis radicans* TURCZ. トシテ知ラレ、コレニ極メテ近縁デ莖中部以下、葉柄ノ毛ハ開出又ハ反捲スルモノガ近年 *T. sericea* OHWI ト名付ケラレタ。MAXI-

MOWICZ 氏ガコノ類ヲ検討シタ際 *T. radicans* ノ記載ニ 'adpresso pubescens' ト書キ、又てうせんかめばさうガ朝鮮、滿洲デハ普通ナノデカク考ヘラレタノハ當然デアツタ。而ルニ私ガ Gray Herbarium デ TURZANINOW 氏ヤ MAXIMOWICZ 氏採集ノ *T. radicans* ノ標本ヲ見ルト、意外ニモ莖中部以下葉柄ニ立毛ヲ有シ、*T. sericea* OHWI ニ一致スルノヲ知ツタ。REGEL 氏モ Tentamen Florae Ussuriensis t. IX, f. 4-8 デ矢張り立毛ノアル形ヲ圖解シテキル。即チ *T. radicans* TURCZ. ハ アムールヲ中心トシテ ダブリヤ東部、ウスリーニ分布シ、滿洲朝鮮ニハ稀ニ見出サレル植物デアリ和名ハけるりさうガ古イ。一方全體ニ平伏毛ノミヲ有シ、朝鮮滿洲ニ多ク九州ニモ稀ニ産スルてうせんかめばさうハ反ツテ未記載ノ植物デアリ、*T. Nakaii* HARA ト命名スル。又 MAXIMOWICZ 氏ガ九州豊後九重山デ自ラ採集シタ *Omphalodes sericea* MAXIM. ナルモノハ JOHNSTON 氏ノ指摘シタ如ク *Trigonotis* デアリ、*T. radicans* ニ似テ全體更ニ毛ノ多イ形デアルノデソノ多毛變種トスルノガ妥當デアルト思フ。尙 *Omphalodes aquatica* BRAND (1915) ハ *T. sericea* OHWI (1936) ト同一番號ノ標本ニ基イタモノデけるりさうデアルガ、BRAND 氏ガ同處ニ引用シテキル京城産ノ標本ハてうせんかめばさうデアラウ。てうせんたびらこハ花序ニ苞葉少ク、花ガ小形デアルガ、てうせんかめばさうトノ關係ハ更ニ材料ヲ集メテ研究スル必要ガアルト思フ。

129) **ざぜんさう** 最近牧野先生ハざぜんさうハ外國ノモノト異ナリ葉ガ廣潤デアルトイフ理由デソノ一品種ト見做サレタ。東亞ト北米東部トイフ二ツノ遠ク離レタ分布區域ヲモツ植物ガ全ク同一カ否カハ私モ渡米前カラ特ニ注意シテキタ問題ノ一デアツタ。昭和十四年及十五年ニ私ハ米國東部ノ原野ヤ林中デ春ノ魁トシテ怪奇ナ花ヲ地上ニ擡<sup>フバサミ</sup>ゲル本種ヲ充分觀察スル機會ニ恵マレ、多クノ標本モ採集シタ。今春ハ下野文挾附近デ關本平八氏ノ御案内デ我がざぜんさうヲ現地デ調べ、米國産ト精細ニ比較スル事ガデキタ。ソノ結果肉穗花序、花被、雌雄蕊等ノ性質デハ兩者ガ驚ク程ヨク一致シ、種類ヲ分ツ事ガ不可能ナノヲ知ツタ。又葉ノ形ハ變化シ、米國産ト全ク同一形ノモノモアツテ、コレダケデハ區別點トナラナイ。唯佛焰苞ガざぜんさうデハ幅廣ク開口シ縁邊僅カニ内卷スルノミデアルガ、米國産デハ縁ガ著シク内へ卷キ込ミ外カラハ肉穗花序ガ見エナイ(第 53, 54 圖參照)。コノ特徴ハ安定シテキルト思ハレタガ、尙念ノタメざぜんさうノ花ノ寫眞ヲ Gray Herbarium ノ FERNALD 教授ニ送リ意見ヲ求メタ處、カクノ如キ形ノ苞ヲ有スルモノハ米國デハ見ラレズ自分モ地方的變種トシテ區別スル事ニ養成スルトノ返事ヲ得タ。本種ハ米國デハ スカンク、キヤベッジト呼バレ惡臭ノ代表デアル スカンクノ名ヲ冠シテ人ニ嫌ハレ、私モ本種ヲ採集シテ自動車内ニ持ち込ミ臭クテ居タマラナカッタ苦イ經驗ヲ持つテキルガ、ざぜんさうハソレ程臭ガ強クナイ様ニ感ジラレル。以上ノ事實ヨリざぜんさうノ學名ヲ *Symplocarpus foetidus* (L.) NUTTALL var. *latissimus* HARA ト定メル。

## Index plantarum in partibus I—XX descriptarum.

<b>Acer</b>				<b>Cerastium</b>			
— <i>nipponicum</i> HARA	14	50		— <i>Ianthes</i> WILLIAMS	17	18	
<b>Acomastylis</b>				— <i>Takedae</i> HARA	12	337	
— <i>calthifolia</i> F. BOLLE	17	20		<b>Chamaesyce</b> S. F. GRAY	11	509	
— var. <i>nipponica</i> HARA	17	21		— <i>humifusa</i> PROKH.	11	509	
<b>Aconitum</b>				— var. <i>glabra</i> HARA	11	510	
— <i>tonense</i> NAKAI	12	792		— var. <i>pilosa</i> HARA	11	510	
<b>Adenophora</b>				— <i>hyssopifolia</i> SMALL	11	511	
— <i>petrophila</i> HARA	11	826		— <i>maculata</i> SMALL	11	511	
<b>Alchemilla</b>				— <i>pilulifera</i> SMALL	11	512	
— <i>japonica</i> NAKAI et HARA	13	177		<b>Chrysosplenium</b>			
<b>Angelica</b>				— <i>album</i> MAXIM.	14	516	
— <i>trichocarpa</i> HARA	11	624		— var. <i>stamineum</i> HARA	14	517	
<b>Apocynum</b>				— <i>Delavayi</i> FRANCH.	17	20	
— <i>Basilkurumon</i> HARA	17	634		— <i>glossophyllum</i> HARA	17	19	
<b>Arisaema</b>				— <i>macrostemon</i> MAXIM.	14	517	
— <i>Thunbergii</i> BLUME	11	821		— var. <i>atrandrum</i> HARA	14	517	
— <i>Urashima</i> HARA	11	822		— var. <i>calicitrappa</i> HARA	14	517	
— var. <i>monostachyum</i> HARA				— var. <i>shiobarensis</i> HARA	14	518	
	11	823		<b>Circaea</b>			
<b>Aruncus vulgaris</b>				— <i>caulescens</i> NAKAI	10	588	
— var. <i>laciniatus</i> HARA	9	513		— var. <i>glabra</i> HARA	10	590	
<b>Aster</b>				— var. <i>pilosula</i> HARA	10	589	
— <i>Miqueliana</i> HARA	12	338		— var. <i>robusta</i> NAKAI	10	589	
<b>Astilbe</b>				— <i>cordata</i> ROYLE	10	593	
— <i>kiusiana</i> HARA	14	49		— <i>erubescens</i> FRANCH. et SAV.			
<b>Betula</b>					10	592	
— <i>apoiensis</i> NAKAI	10	227		— <i>Kitagawae</i> HARA	10	595	
<b>Bupleurum</b>				— <i>Maximowiczii</i> HARA	10	599	
— <i>yesoense</i> NAKAI	9	515		— var. <i>viridicalyx</i> HARA	10	600	
<b>Caldesia</b>				— <i>mollis</i> SIEB. et ZUCC.	10	596	
— <i>reniformis</i> f. <i>natans</i> HARA	9	520		— var. <i>ovata</i> HARA	10	598	
<b>Cardamine</b>				— <i>Pricei</i> HAYATA	10	588	
— <i>kiusiana</i> HARA	14	516		<b>Clematis apiifolia</b>			
				— var. <i>bitermata</i> MAKINO	17	119	

<b>Clinopodium L.</b>	11	101	<b>Erigeron</b>		
— <i>chinense</i> O. KUNTZE.	12	38	— <i>heterotrichus</i> HARA	11	827
— — subsp. <i>glabrescens</i> HARA	12	43	<b>Eubotryoides HARA</b>	11	626
— — subsp. <i>grandiflorum</i> HARA	12	39	— <i>Grayana</i> HARA	11	627
— — var. <i>grandiflorum</i> HARA	12	39	— — var. <i>glabra</i> HARA	11	628
— — var. <i>parviflorum</i> HARA	12	41	— — — f. <i>lasiocarpa</i> HARA	11	628
— — — f. <i>albiflorum</i> HARA	12	42	— — — var. <i>glaucina</i> HARA	11	631
— — — f. <i>setilobum</i> HARA	12	42	— — — f. <i>hypoleuca</i> HARA	11	632
— — var. <i>shibetchense</i> KOIDZ.	12	43	— — var. <i>parvifolia</i> HARA	11	631
— <i>confine</i> O. KUNTZE	11	101	— — var. <i>oblongifolia</i> HARA	11	629
— <i>Fauriei</i> HARA	11	106	— — — f. <i>leiocarpa</i> HARA	11	629
— — var. <i>japonicum</i> HARA	11	106	— — — f. <i>Tschonoskii</i> HARA	11	630
— <i>macranthum</i> HARA	11	110	— — var. <i>pruinosa</i> HARA	11	630
— <i>minimum</i> HARA	11	109	— — — f. <i>psilocarpa</i> HARA	11	630
— <i>multicaule</i> O. KUNTZE	11	103	— — var. <i>venosa</i> HARA	11	630
— — var. <i>latifolium</i> HARA	11	104	— — var. <i>yezoensis</i> HARA	11	628
— — var. <i>Taquetii</i> HARA	11	104	— — — f. <i>lissocarpa</i> HARA	11	629
— <i>sachalinense</i> KOIDZ.	11	105	<b>Euphrasia</b>		
<b>Conioselinum</b>			— <i>yezoensis</i> HARA	12	165
— <i>nipponicum</i> HARA	17	631	<b>Filipendula</b>		
<b>Coronopus</b>			— <i>yezoensis</i> HARA	10	235
— <i>Wrightii</i> HARA	17	340	<b>Galarhoeus HAWORTH</b>	11	382
<b>Cuscuta</b>			— <i>adenochlorus</i> HARA	11	383
— <i>australis</i> R. BROWN	17	121	— <i>ebracteolatus</i> HARA	11	384
— <i>chinensis</i> LAMARCK	17	120	— <i>Esula</i> RYDBERG	11	384
<b>Didickea</b>			— <i>helioscopius</i> HAWORTH	11	385
— <i>japonica</i> HARA	13	605	— <i>Jolkinii</i> HARA	11	385
<b>Diplomorpha</b>			— <i>Lathyrus</i> HAWORTH	11	385
— <i>capitellata</i> HARA	13	178	— <i>pekinensis</i> HARA	11	386
<b>Draba</b>			— <i>sendaicus</i> HARA	11	388
— <i>Nakaiana</i> HARA	11	622	— <i>Sieboldianus</i> HARA	11	388
— <i>ussuriensis</i> POHLE	9	513	— — var. <i>montanus</i> HARA	11	388
<b>Elatostema</b>			— <i>togakusensis</i> HARA	11	389
— <i>Yosiei</i> HARA	14	515	— <i>Watanabei</i> HARA	11	389
			<b>Galium</b>		
			— <i>Kinuta</i> NAKAI et HARA	9	518

— var. <i>bracteatum</i> NAKAI et HARA	9	520	<b>Myosotis</b>	— <i>sylvatica</i> HOFFMANN	12	164
— var. <i>viridescens</i> NAKAI et HARA	9	519	<b>Orthodon</b>	— <i>hirtum</i> HARA	12	44
— <i>Nakaii</i> KUDO	9	517	<b>Persicaria</b>	— <i>amblyophylla</i> HARA	12	336
<b>Gentiana</b>			— <i>pubescens</i> HARA	17	335	
— <i>Yabei</i> TAKEDA et HARA	13	600	— var. <i>acuminata</i> HARA	17	335	
<b>Geranium</b>			— <i>Yokusaiana</i> NAKAI	17	337	
— <i>shikokianum</i> MATSUM.	12	37	— f. <i>albiflora</i> HARA	17	338	
— var. <i>kai-montanum</i> HONDA et HARA	12	38	— var. <i>laviflora</i> HARA	17	338	
— var. <i>yamatense</i> HARA	12	38	<b>Pleuropteropyrum</b>			
<b>Habenaria linearifolia</b>			— <i>Nakaii</i> HARA	10	231	
— var. <i>brachycentra</i> HARA	9	520	<b>Primula</b>			
— <i>yezoensis</i> HARA	11	512	— <i>Kawasimae</i> HARA	17	633	
<b>Heleocharis laeviseta</b>			— f. <i>albiflora</i> HARA	17	634	
— var. <i>major</i> HARA	14	521	<b>Pulsatilla</b>			
— <i>major</i> HARA	11	820	— <i>sachalinensis</i> HARA	13	173	
<b>Hemerocallis</b>			<b>Rhododendron</b>			
— <i>vespertina</i> HARA	17	127	— <i>Mayebarae</i> NAKAI et HARA	11	825	
— <i>yezoensis</i> HARA	14	520	— <i>Miyazawae</i> NAKAI et HARA	11	823	
<b>Hydrocotyle</b>			— <i>reticulatum</i> D. DON			
— <i>maritima</i> HONDA	17	344	— var. <i>glabrescens</i> NAKAI et HARA	11	824	
— <i>nepalensis</i> HOOKER	17	342	<b>Rorippa</b>			
— <i>ramiflora</i> MAXIM.	17	344	— <i>nikkoensis</i> HARA	12	338	
<b>Jussiaea</b>			— <i>sublyrata</i> HARA	11	623	
— Sect. <i>Nematopyxis</i> HARA	17	342	— f. <i>longicarpa</i> HARA	11	624	
— <i>Greatrexii</i> HARA	17	342	— f. <i>obtusula</i> HARA	11	624	
<b>Lobelia</b>			<b>Salix</b>			
— <i>chinensis</i> LOUREIRO	17	22	— <i>hidaka-montana</i> HARA	9	512	
— f. <i>lactiflora</i> HARA	17	23	<b>Salvia</b>			
— f. <i>plena</i> HARA	17	23	— <i>isensis</i> NAKAI	14	51	
— <i>Hancei</i> HARA	17	23	<b>Sanguisorba</b>			
<b>Loxocalyx ambiguus</b>			— <i>chlorantha</i> NAKAI	10	234	
— var. <i>laciniatus</i> HARA	12	167	— <i>hakusanensis</i> var. <i>coreana</i> HARA	10	235	
<b>Mitella</b>			— <i>sitchensis</i> C. A. MEYER	10	232	
— <i>Makinoi</i> HARA	14	519				
— <i>Yoshinagae</i> HARA	14	518				

— var. <i>bracteosa</i> HARA	10	233	— <i>stenophyllum</i> MAXIM.	12	169
— var. <i>pilosa</i> HARA	10	233	— <i>stoloniferum</i> BUCH.-HAMILT.	12	339
— var. <i>riishirensis</i> KUDO	10	233	— var. <i>coreanum</i> HARA	12	341
— var. <i>typica</i> HARA	10	233	— var. <i>macrocarpum</i> HARA	12	340
<b>Saxifraga</b>			— <i>yamatense</i> MAKINO	12	171
— <i>cherlerioides</i> D. DON	13	174	<b>Spergularia</b>		
— var. <i>rebunshirensis</i> HARA	13	174	— <i>marina</i> var. <i>asiatica</i> HARA	17	24
— f. <i>laxa</i> HARA	13	175	— <i>salina</i> var. <i>asiatica</i> HARA	13	171
— var. <i>togakushensis</i> HARA	13	175	<b>Symplocarpus</b>		
<b>Scirpus</b>			— <i>foetidus</i> NUTTALL	17	638
— <i>nipponicus</i> MAKINO	9	520	— var. <i>latissimus</i> HARA	17	638
<b>Scutellaria</b>			<b>Syringa</b>		
— <i>abbreviata</i> HARA	13	604	— <i>reticulata</i> HARA	17	21
— <i>amabilis</i> HARA	13	602	— var. <i>macrophylla</i> HARA	17	21
— <i>brachyspica</i> -NAKAI et HARA	12	793	— var. <i>mandshurica</i> HARA	17	22
— <i>kiusiana</i> HARA	12	795	— var. <i>Tatewakiana</i> HARA	17	22
— f. <i>albiflora</i> HARA	12	797	<b>Trigonotis</b>		
— var. <i>discolor</i> HARA	12	797	— <i>Nakaii</i> HARA	17	635
— <i>Kurokawae</i> HARA	13	603	— <i>radicans</i> STEVEN	17	637
— <i>Maekawae</i> HARA	12	798	— var. <i>sericea</i> HARA	17	637
— var. <i>pubescens</i> HARA	12	799	<b>Utricularia</b>		
— <i>Muramatsui</i> HARA	12	799	— <i>yakusimensis</i> MASAMUNE	17	122
— <i>parvifolia</i> KOIDZ.	14	52	— f. <i>albida</i> HARA	17	123
— var. <i>glabra</i> HARA	14	53	<b>Valeriana</b>		
— var. <i>pilosella</i> HARA	14	52	— <i>amurensis</i> P. SMIRNOV	17	127
— var. <i>vulgaris</i> HARA	14	52	— f. <i>leiocarpa</i> HARA	17	127
— f. <i>alba</i> HARA	14	52	— <i>Fauriei</i> BRIQUET	17	123
— f. <i>ilacina</i> HARA	14	52	— var. <i>dasycarpa</i> HARA	17	126
— <i>tsusimensis</i> HARA	13	601	— var. <i>sachalinensis</i> HARA	17	126
<b>Solanum</b>			— var. <i>typica</i> HARA	17	124
— <i>megacarpum</i> KOIDZUMI	11	825	— f. <i>coreana</i> HARA	17	125
<b>Sparganium</b>			<b>Veronica senanensis</b>		
— <i>glomeratum</i> LAESTAD.	12	167	— var. <i>pubescens</i> HARA	9	517
— var. <i>angustifolium</i> GRAEBN.	12	169	— var. <i>yesoalpina</i> KOIDZ.	9	516
— <i>japonicum</i> ROTHERT	12	170	<b>Youngia</b>		
— <i>Kawakamii</i> HARA	14	53	— <i>formosana</i> HARA	14	53
			— <i>gymnopus</i> HARA	14	53