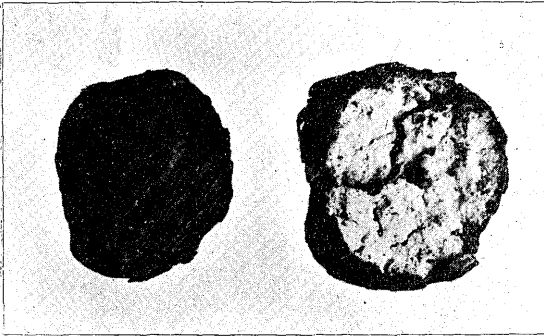


テ、北米産品ノ *P. Cocos* ト同種デアルト断定シテシマツタノデ、殘ルハ邦産ノ茯苓ノミトナツタ。載氏等ハ日本産品モ亦同種ラシイト推定シテキル。



第 2 圖 北米産 *Poria Cocos*.

私ハ先年滯佛中ニ歐洲ノ *P. Cocos* ヲ研究シ、邦産ノ茯苓ト同種デアルトコトヲ知り得タ。勿論、子實體ヲ見得ナイノデ確言ハデキナイガ、確カニ同種デアル。北米産品ハ WEBER 氏ノ好意デ比較研究シ得タガ、ヤハリ同種ト断定シ得ルヨウニ思フ。コレハ解剖學的ノ

比較ニ基イタモノデアルカラ、幾分カ不安デアツタガ、昨夏幸ニモ十餘年ノ苦勞ガ報イラレテ邦産茯苓ノ子實體ヲ發見シタ。子實體形成ノ狀況モ北米産品ト差ガナク、菌種モ永年性 *Poria* デアルカラ、イヨイヨ彼我産品ハ同種デアルトノ信念ヲ固メタ。孢子ノ色、形ハ同様デアルガ、大サハ邦産品ハ $7.5-9 \times 3 \mu$ デアリ、北米産品ハ $7-8 \times 3.5-4 \mu$ デアル。コノ差ハ同種ト断定シテ差支ガナイ。菌叢ノ色ハちよこれト色デ之モ彼我産品相同ジイ。私ハ邦産茯苓ハ歐米産品ト同種デアツテ、學名ハ *Poria Cocos* WOLF トナスベキモノト信ズル。

Contributiones ad Dendrologiam Nipponiæ Australis (III)

auctore

SUMIHIKO HATUSIMA

初島住彦：日本南方木本植物資料 (其三)

24) *Psychotria liukiensis* HATUSIMA, sp. nov. (Fig. 1)

? *Psychotria homalosperma* (non A. GRAY) MATSUMURA in Tokyo Bot. Mag. XV (1901) 16.

* Contribution from the Laboratory of Dendrology of the Forestry Institute, Department of Agriculture, Kyusyu Imperial University.

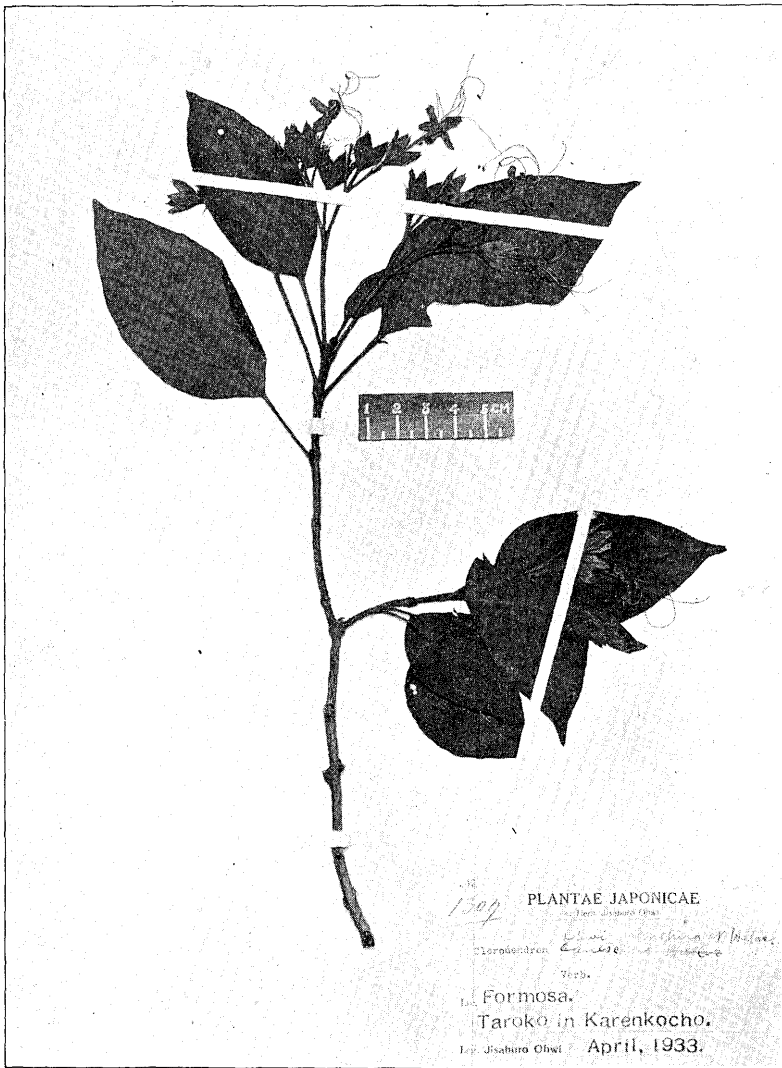


Fig. 1. *Psychotria liukiensis* HATUSIMA. Typus.

Frutex, rami et ramuli validiuseculi glabri 3-5 mm in diametro. Folia opposita oblonga v. elliptica rarius obovato-elliptica tenuiter coriacea 11-17 cm longa 6-7 cm lata, apice breve cuspidato-acuta, basi cuneato-acuminata ad petiolum 1.5-2 cm longum abeuntia, margine integra, utraque pagine glabra

in siccitate infra rubro-brunnescens, costa supra impressa subtus elevata, venis primariis lateralibus utroque latere costæ 8-12 (plerumque 10-12) angulo 30°-40° a costa egressis prope margine arcuato-unitis, reticulis obsoletis, stipulis interpetiolaribus triangularibus 6 mm longis 3-4 mm latis. Cymæ terminales vel subterminales glabræ 6 cm longæ 7 cm latæ supra medium trichotome ramosæ, pedunculis 2.5-3.5 cm longis 4 mm in diametro, ramis primariis (radiis umbellatum) 3, 1.5 cm longis, ramis secundariis (pedicellis) subsessilibus 4-5 fasciculatis. Flores ignoti. Fructus subsessili dense glomerati ellipticus v. ovato-ellipticus 8-9 mm longus 5-6 mm latus apice rotundatus basi obtusus longitudinaliter sulcatus 2-pyrenus, pyrenis plano-convexis dorso longitudinaliter profunde 5-sulcatis. Albumine carnosio margine plus minus ruminato.

Nom. Nipp. *Nagami-botyôji*.

Hab. Liukiu: Syuri, Okinawajima (leg. Z. TASHIRO, Jun. 1, 1924, fr. Typus); ins. Iriomote-jima (leg. R. KANEHIRA, Dec. 30, 1933, fr.)

Very near *Psychotria cephalophora* MERRILL (= *P. kotoensis* HAYATA) from Botel Tabago island and the Philippines, but distinguishable from it by its ramose inflorescences and much shorter petioles. This resembles also *Psychotria rubra* (LOUR.) POIR. (= *P. Reevesii* WALL.), but is separable from it by its much broader oblong leaves, more stouter infructescences with much larger elliptic subsessile fruits and its much narrower triangular stipules.

25) **Rubus sacrosanctus** (§ *Anoplobatus*) HATUSIMA, hybrid. nov.

(*Rubus hirsutus* THUNBERG) × (*Rubus kyusianus* KOIDZUMI = *R. trifidus* THUNBERG × *R. dulcis* KOIDZUMI) ?

Frutex erectus ramosus ad 2 m altus. Caulis rugosis 5-10 mm in diametro. Ramis apicis purpureo-rubrescentibus glanduloso-hirsutis 3 mm in diametro remote aculeolatis, aculeis deorsum recurvis 4 mm longis basi dilatatis. Folia ramulorum sterilium trifoliolata longe petiolata, stipulis ad basin petioli insertis parvis lineari-lanceolatis circ. 1 cm longis 1 mm latis. Petiolis 5-7 cm longis glanduloso-setuloso-hirsutis remote aculeolatis; foliolo terminali vulgo petiolulato, rhombeo-elliptico vel rhombeo-ovato basi cuneato apice acuminato margine argute duplicato-mucronato-serrato 10-12 cm longo 5-7 cm lato, ut-

raque pagine primo hirsuto et pauce glanduloso-punctulato demum subglabro vel ad costas venas hirsuto ; petiolulo 5–8 mm longo. Foliolis lateralibus subsessilibus oppositis oblique ovatis basi oblique rotundatis 8–9 cm longis 5–6 cm latis 2-lobatis, lobis exterioribus minoribus ovato-triangularis 1–3 cm longis 1–2 cm latis. Folia ramulorum floriferorum minoribus trifoliolata, stipulis ad basin petioli dispositis lanceolatis vel oblongo-lanceolatis 1–1.2 cm longis 1–2 mm latis extus glanduloso-setuloso-hirsutis; petiolis circ. 4–4.5 cm longis: foliis terminalibus subsessilibus rhombeo-ovatis 5–6.5 cm longis 1–2 cm latis, lateralibus oblique ovatis 4–4.5 cm longis 2–2.5 cm latis basi oblique rotundatis apice acuminatis margine duplicato-serratis. Flores ad apicem ramulorum lateralium hornotinorum solitarii interdum in racemosum dispositi ; racemis 1–2 floratis, pedicellis circ. 2 cm longis 0.8 mm latis setoso-hirsutis, cupla calycis circ. 8 mm in diametro, lobis oblongo-triangularibus 4–5 mm latis 13–15 (rarius 19) mm longis apice longe caudato-acuminatis, caudis 5–7 mm longis extus glanduloso-setoso-hirsutis intus albo villosis Petala alba late ovata vel ovato-rotundata apice obtuso-rotundata basi mucronato-rotundata 2 cm longa 1.5 cm lata. Stamina ∞ ad marginem calycis cuplæ inserta, filamentis in longitudine variabilibus, exterioribus longioribus circ. 5 mm longis complanatis ; antheris 0.6 mm longis 0.4 mm latis : receptaculum carpellorum rotundatum 3 mm longum pilosum; carpellis glabris; stigmati 2 mm longis ; stigma obliquum 2-lobatum.

Nom. Nipp. *Oni-kusaitigo*.

Hab. Kiusiu : in urbis Hukuoka (leg. S. HATUSIMA, Maio 3, 1935, fl. Typus); ibid. (leg. S. HATUSIMA, Nov. 23, 1936, st. Typus).

The present plant is closely allied to *Rubus Nishimuranus* KOIZUMI from the Bonins, but differs from it in the less indumentum, its dense glandular-hairs having pilose hairs on the stems and petioles, its somewhat larger flowers with much larger petals and longer sepals with long linear tails, and also its less prickly stems and petioles.

26) **Clerodendron Ohwii** KANEHIRA et HATUSIMA, sp. nov. (Fig. 2).

Frutex, rami subtetragoni cinerascetes brevissime cinereo-pubescentes. Ramulis subtetragonibus fusco-tomentosis oppositis. Folia opposita chartacea

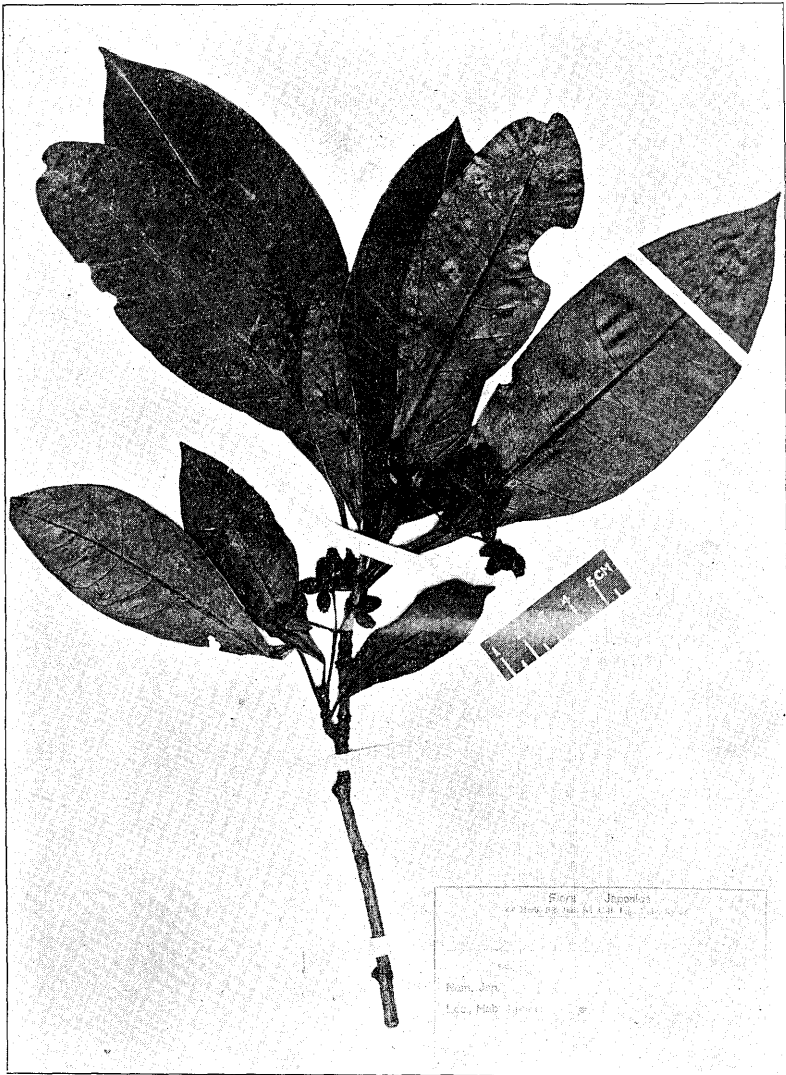


Fig. 2. *Clerodendron Ohwi* KANEHIRA et HATUSIMA. Typus.

ovato-elliptica v. elliptica v. elliptico-oblonga 7-11 cm longa 3-5 cm lata apice acuta v. acuto-cuspidata, basi cuneata v. obtusa margine repandato-integra costa supra haud elevata infra elevata, venis primariis lateralibus utrinque latere 4-5, a costa angulo 50° egressis ad marginem arcuato-unitis, utrinque

fusco-tomentellus, petiolis 2–2.5 cm longis fusco-tomentosis. Cymæ terminales v. subterminales ramosæ 8 cm longæ 5–7 cm latæ fusco-tomentosæ, ramis dichotome furcatis, bracteis linearibus 4–8 mm longis, pedunculis primariis 3–4.5 cm longis 1–1.2 mm diametro, secundariis 1.5 cm longis 1 mm diametro, pedicellis 1–1.2 cm longis. Calyx obovato-campanulatus 1.3–1.5 cm longus apice 5-lobatus extus pubescens intus glabrescens, lobis triangularibus 5–6 mm longis 4 mm latis. Corolla tubuloso-campanulata 2.5 cm longa supra sparsissime pilosa, tubo tenuissimo 2 cm longo 1.5 mm lato, limbo campanulato 5-lobato, lobis ovato-ellipticis vel ovato-oblongis apice obtusis 7–9 mm longis 4–5 mm latis margine integris ciliolatis. Stamina 4 tubi fauce affixa, filamentis 3–4 cm longis filiformis glabris longe exsertis, antheris oblongis 2 mm longis 1 mm latis. Ovarium oblongo-globosum 1.5 mm longa, stylo 4 cm longo apice brevissime 2-lobato.

Nom. Nipp. *Birôdo-kusagi*.

Hab. Formosa : Taroko, Karenkotyô (leg. J. OHWI, Aprili 1933, no. 1307).

This is near *Clerodendron Vanoverberghii* MERRILL from Luzon, but differs from it in having much narrower leaves with shorter petioles, smaller inflorescences, much longer calyx and the about twice longer stamens. This also somewhat resembles densely pubescent form of *C. trichotomum*, but is easily distinguishable from it by its smaller flowers with more patent calyx lobes and much stouter pedicels.

27) **Parthenocissus himalayana** PLANCHON var. **rubrifolia** GAGNEPAIN in SARGENT, Pl. Wils. I (1911) 101-REHDER in Journ. Arn. Arb. XV (1934) 22.

Syn. *Vitis inconstans* (non MIQUEL) HENRY, List. Pl. Formos. (1896) 28.

Vitis rubrifolia LÉVEILLÉ et VANIOT in Bull. Soc. Agric. Sci. Sarthe LX (1905) 44.

Parthenocissus tricuspidata (non PLANCH.) SASAKI, List. Pl. Formos. (1928) 282.

Nom. Nipp. *Urajiro-natuzuta* (nom. nov.)

Hab. Formosa : mt. Sitiseizan, Prov. Taihoku (leg. J. OHWI, Maio, 1933, no. 2089).

Distr. China occ.

A new addition to the flora of Formosa.

28) **Litsea citriodora** (SIEB. et ZUCC.) HATUSIMA, comb. nov.

Syn. *Litsea citrata* (non BLUME) auct. jap.

Benzoin citriodorum SIEBOLD et ZUCCARINI, Fl. Jap. Fam. Nat. II (1846) 206, n. 711.

Aperula citriodora BLUME in Mus. Bot. Lugd. Bat. I (1851) 366-ENGLER in ENGLDR, Bot. Jahrb. VI (1885) 57.

Lindera citriodora HEMSLEY in Journ. Linn. Soc. XXVI (1891) 387-MATSUMURA Ind. Pl. Jap. II-2 (1912) 136, excl. pl. ex Formosa.

Lindera citrata KOIDZUMI in Tokyo Bot. Mag. XL (1926) 343.

Benzoin citrata KOIDZUMI, l. c. in syn.-MASAMUNE, Floristic. Geobot. Stud. Yakusima (1934) 207.

Nom. Nipp. *Aontoji*.

Hab. Kiusiu austr., ins. Amami-ohsima, Okinawa.

29) **Bobua taiwaniana** HATUSIMA, nom. nov.

(*Symplocos taiwaniana* HATUSIMA, mss.)

Syn. *Symplocos adinandrifolia* HAYATA var. *theifolia* HAYATA, Ic. Pl. Formos. V (1915) 95, fig. 24.

Symplocos theifolia (non D. DON) HAYATA, Ic. Pl. Formos. VI (1916).

29.

Bobua theifolia KANEHIRA et SASAKI in Sasaki, List Pl. Formos. (1928) 332.

Symplocos Hayatae MORI in Trans. Nat. Hist. Soc. Formos. XXIV (1934) 193, non GUILLAUMIN in Bull. Soc. Bot. France LXXIX (1932) 121, *syn. nov.*

Nom. Nipp. *Kurarufutagi*, *Kurarahanioki*.

Distr. Formosa.

30) **Diospyros Odasimæ** HATUSIMA, nom. nov.

Syn. *Diospyros Hayatai* (non H. LECOMTE 1928) ODASIMA in Journ. Soc. Trop. Agric. Taihoku VII (1935) 83, *syn. nov.*

Nom. Nipp. *Taiwangaki*.

Distr. Formosa.

31) **Bladhia lentiginosa** NAKAI, Trees & Shrubs Jap. ed. 2 (1927) 283.

var. **rectangularis** (HAYATA) HATSUSIMA, comb. nov.

Syn. *Ardisia rectangularis* HAYATA, Mat. Fl. Formos. V (1911) 324 et Icon. Pl. Formos. VI (1916) 44.

Ardisia crisp var. *Taquetii* LÉVEILLÉ in FEDDE, Repert. X (1912) 374

Ardisia Konishii HAYATA, Icon. Pl. Formos. V (1915) 324.

Bladhia crisp var. *Taquetii* NAKAI, Trees & Shrubs Jap. (1922) 208.

Bladhia lentiginosa var. *Taquetii* NAKAI, Trees & Shrubs Jap. ed. 2 (1927) 185.

Nom. Nipp. *Oh-manryô*.

Distr. Hondô (Prov. Awa), Quelpært, Formosa.

32) **Piper sintenense** HATUSIMA in Acta Phytotax. et Geobot. IV (1935) 210.

Syn. *Piper hispidum* HAYATA, Mat. Fl. Formos. (1911) 234, nec. MARTIUS & GALEOTTI non SWARZ., syn. nov.

Nom. Nipp. *Garambi-gosyô*, *Usuba-futôgadzura*.

Distr. Formosa.

24) **ながみぼちやうじ** *Psychotria liukiensis* HATUSIMA.

一番近いノハ比律賓カラ臺灣ノ紅頭嶼ニ分布スルこうとうぼちやうじデアルガ本種トハ花序ガ分岐シテ圓錐花序トナラヌコト、葉柄ガ半長位シカナイコトデ區別サレル。又琉球、臺灣等ニ最モ普通ナルぼちやうじトハ葉ガ大キク、花序ハ丈夫ニ出來テキテ實ハ彼ノ様ニ球形トナラズ橢圓形ヲ呈シ大サモ二倍位モ大イノデ區別サレル。嘗テ松村博士ガ琉球ノ植物ヲ研究サレタ折小笠原産ノおがさはらぼちやうじガ琉球ニ産スルコトヲ報ゼラレタガソレハ多分本種デナカツタラウカト考ヘル。おがさはらぼちやうじハ一寸似テハキルガ全然別ノ群ニ屬スルモノデアル。

35) **おにくさいちご** *Rubus sacrosanctus* HATUSIMA.

本種ハ福岡市ノ西公園内ニ自生シテキルいちごデ筆者ハくさいちごト最近小泉博士ニヨリ發表セラレタつくしきいちご (*R. kyusianus*) トノ雜種ト考ヘル。葉質、葉形、花序、花ノ大サ形状、小枝、葉柄、花序等ニ於ケル密ナ紫紅色ノ腺毛等ハくさいちごノ特徴ヲ

現ハシテキルガ高さ2米位トナルコト、若葉ハ五枚ノ羽狀葉トナラズ5深裂スルコト等ハつくしきいちごノ特徴ヲ現ハシテキル。此ノつくしきいちごノ正體ニツイテハ筆者多少ノ疑問ヲ持ツテキタノデ現場デ多數ノ個體ニツキ詳細ニ研究シタ結果カぢいちごトクワンせいきいちご (*R. dulcis* Koidz.) 間ノ雜種デアルコトヲツキトメタ。本種モヤハリ西公園内ニ限り生育シ他所ニハ未ダ發見シナイ、シカモくさいいちごト共ニ生育シテキルノデ雜種形成ノ可能性ハ充分ニ考ヘラレルノデアル。次ニ此ノおにくさいいちごガ小笠原産ノ *R. Nishimuranus* Koidz. (にしむらきいちご) ニ極メテ似テキル事實ハ非常ニ面白イ事ト思フ。只異ナル點ハ小笠原産ガ一體ニ白毛ガ多く腺毛ガ少ク、花ガ幾分小サク小枝、葉柄ノ刺ガ少ク多イ位ノモノデ考ヘ方ニヨツテつくしきいちごハにしむらきいちごノ變種トモ考ヘラレル程デアル。以上ノ事實カラ次ノ様ナ考ヘ方モ無理デハナカラウト考ヘル、即チにしむらきいちごハかぢいちご又ハソノ近似種トくさいいちご又ハソノ近似品トノ間ニ出來タ雜種デソノ發生ノ起原ハ非常ニ古イ昔ニ溯ルモノデアル。

(26) **ひろろどくさぎ** *Clerodendron Ohwii* KANEHIRA et HATUSIMA.

本種ハ比島産ノ *C. Vancouverbergii* MERRILL ニ最モ近いガ葉ハ幅狭ク、葉柄モ短カク、花序ハ小サク、萼モ長ク、雄蕊ハ約2倍ノ長サガアルノデ區別サレル。又全株黃褐色ノ密毛ヲ有シクさぎノ密毛型ノモノニモ一寸似テキルガ花ガ小サイコト、花序ノ小枝、花梗等ハ丈夫ニ出來テキルコト、殊ニ萼裂片ハ開イテキルノデー見シテ區別ガ出來ル。一見しらげくさぎニ似タ點モアルガ葉脚、花序其他デ異ナリ全然別種デアル。大井次三郎氏ガ1933年花蓮港廳ノたろこデ採集サレ當教室ニ寄贈セラレタ品デアル。

(27) **うらじろなつづた** *Parthenocissus himalayana* PLANCHON var. *rubrifolia* GAGNEPAIN.

從來臺灣ノつたハ内地ノつた (*P. tricuspidata*) ト同一物ト考ヘラレテキタガ過日大井次三郎氏ヨリ當教室ニ寄贈サレタ品ヲ見ルト若葉デモ三全裂シ裏面ハ白粉デ内地産ト別種ト思ハレタノデ支那産ニ當ツテミルト上説ノ種ト極メテヨク一致シタガ尙念ノタメ REHDER 氏ニ送ツテ支那産ト比較シテモラツタラ間違ナイトノ通知ガアツタ。之デ我國ノつたノ種類ハ2種ニナツタワケデアル。

(28) **あをもじ** *Litsea citriodora* HATUSIMA.

九州南部カラ琉球ニカケテ分布スルあをもじハひまらや地方ヨリ記載セラレタ *Litsea citrata* BL. ト同一物ト考ヘラレテキルガ後者ハ *Litsea Cubeba* PERS. (たいわんくろもじ) ノ異名デアをもじトハ別種デ葉ハ小サク先端ハあをもじノ様ニ長ク尖ラナイ。從ツテあをもじノ學名トシテハ *Benzoin citriodorum* SIEB. et ZUCC. ヲ *Litsea* ニ移シタ *L. citriodora* HATUSIMA ガ正シイ。本種ハ落葉性デー見くろもじ屬ノ様デアルガ葯ハ内向デ2室デナク四室カラナツテキルノデ明カニ *Litsea* 屬デアル。

(29) **くらるふたぎ** *Bobua taiwaniana* HATUSIMA.

Symplocos Hayatae MORI ハ既ニ GUILLAUMIN ガ1932年ニ交趾支那ノ植物ニ命名シ

テキルノデ使用出來ナイ。

(30) **たいわんがき** *Diospyros Odasimæ* HATUSIMA.

Diospyros Hayatai ODAKIMA ハ既ニ7年前ニ H. LECOMTE ガ交趾支那ノ植物ニ同一名ヲ採用シテキルノデ採用出來ナイ。

(31) **おほまんりやう** *Bladhia lentiginosa* NAKAI var. *rectangularis* (HAYATA) HATUSIMA.

おほまんりやうノ學名ハ早田博士ノ方ガ LÉVEILLÉ ノモノヨリ一年早イノデ上記ノ組合セヲヤツタ。近時 REHDER 氏ハ TAQUET ガ濟州島デ採集シ LÉVEILLÉ ガ *Ardisia crispata* var. *Tapuetii* ト命名シタ type specimen ヲ檢シまんりやうト何等區別ナシトシテキルガ此ハ標本上デハ特徴ガツカメナイガ生エテキル現場デハ少クトモ變種トシテノ區別ハ充分アル様デアル。分布ハ安房國、濟州島、臺灣トナツテキルガ恐ラク南支那方面ニモアルモノト考ヘル。

(32) **がらんびこそせう** *Piper sintenense* HATUSIMA.

以前筆者ガ上記ノ學名デ發表シタ品ハ臺灣ノ鈴木重良氏ノ注意ニヨリ再檢ノ結果 *P. hispidum* HAYATA ト同一品ナルコトガワカッタノデ、此處ニ筆者ノ不注意ヲ御詫スル次第デアル。シカシ此ノ *P. hispidum* ナル學名ハ既ニ2~3ノ同一名ガ他ノ國ノ植物ニツケテアルノデヤハリ學名トシテハ筆者ノ名前ガ殘ルコトニナル。

漢藥薏苡仁ノ生藥學的知見（其一）

藤 田 路 一

M. FUJITA: A pharmacognostical study on "Yoku-i-nin" or "I-i-jen" chinese drugs. (I)

薏苡仁ハ現行ノ漢藥中彌々重要ノ地位ヲ占メ、利尿、健胃或ハ滋強劑トシテ頻用サレル。其原植物ハ我邦ニ享保年中支那ヨリ渡來シ、廣ク栽植サレル禾本科ノはとむぎヲ充當スル。

日本植物總覽ハ *Coix* 屬ヲ分類シテ、*Coix Lachryma-Jobi* L. 及ビ其變種タル var. *frumentacea* MAKINO. はとむぎ、しこくむぎ、var. *maxima* MAKINO おにじゆすだま var. *typica* MAKINO たうむぎ、てうせんむぎ並ニ *C. Lachryma-*