

Materials of the Botanical Research towards the Flora of Micronesia (XV)

By

T. HOSOKAWA*

細川隆英：南洋群島植物探究資料（其十五）

Hypserpa (?) *trukensis* HOSOKAWA, *sp. nov.*

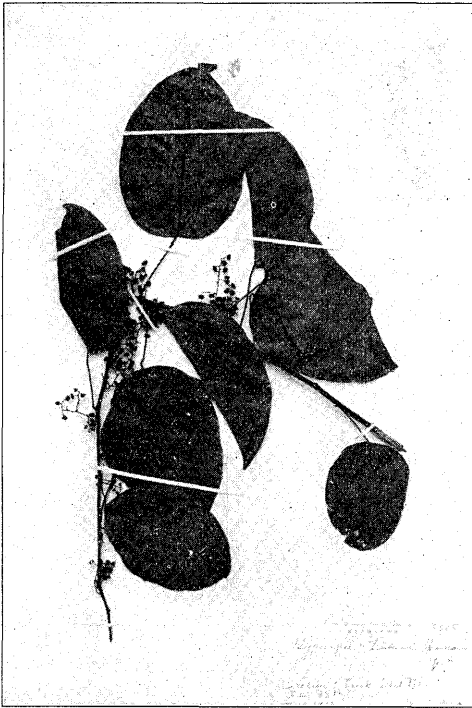


Fig. 10. *Hypserpa*(?) *trukensis* HOSOKAWA, *sp. nov.* (Type specimen, $\times 1/5$)

Frutex alte scandens, caulibus glabris. Folia alterna, glaberrima, petiolata, petiolis basi et apice incrassatis 2-4.5 cm longa; lamina ovata, basi paullo cordata vel truncata, apice curvatoacuta, integra chartaceo-coriacea, reticulata, lucida, subpalmatim 5-nervata, ca. 5.5-11 cm longa ca. 5-8 cm lata. Paniculae δ axillares, ad 5 cm longae; rhachis et pedicelli cinereo-pubescentes; pedicelli 2-5 mm longi. Bractea ovatodeltoidea, acuminata, 2 mm longa 1 mm lata. Sepala 5-6 exteriora bracteoliformia, orbicularia, extus pubescentia 0.5-1.5 mm longa et lata, 6 interiora imbricata, glabra, concava, orbicularia, 2-3 mm longa et lata. Pe-

* Laboratory of Systematic Botany and Plant Oecology, Botanical Institute, Taihoku Imperial University, Taiwan, Nippon.

tala 7 vel 8 incrassata, ovata, plicata, 1-1.5 mm longa 0.7-1 cm lata. Stamina ca. 42-50 in capitulum 2 mm longum congregatim connata, antheris terminalibus connectivis apice truncatis rimis longitudinalibus dehiscentibus.

Flores ♀ et drupæ ignotæ.

Hab. *Caroline*: Truk, in a primary forest at the summit of the islet of Tol (T. HOSOKAWA, no. 8325! VII. 29, 1936—Type in Herb. Taihoku Imper. Univ.).

Vernacular name in Truk, "Tyôtyon."

Droseraceæ

Drosera spathulata LABILL., Nov. Holl. pl. spec. I. (1804). p. 79, t. 106, f. 1; DIELS in ENGL. Pfl.-Reich Heft 26 (1906) S. 83.

Hab. *Caroline*: Palau (no. 7490!).

Distrib. The southern parts of Japan, China, Malaysia. Australia and New Zealand. The species new to Palau.

Connaraceæ

Connarus Gaudichaudii PLANCH. in Linnæa XXIII. (1850) p. 429; G. SCHELLENB. in ENGL. Bot. Jahrb. LIX. (1923) S. 17; KANEHIRA in Bot. Mag. Tokyo XLV. (1931) p. 282, Fl. Micron. (1933) p. 129, f. 44, Enum. Micron. Pl. (1935) p. 325.

Omphalobium Gaudichaudii DC., Prodr. II. (1825) p. 85.

Hab. *Caroline*: Truk, islet Wara (T. HOSOKAWA, no. 8404!).

Distrib. New Guinea, Moluccas, Palau, and new to Truk.

Leguminosæ

Tephrosia mariana DC., Prodr. II. (1825) p. 253; MERR. in Philipp. Journ. Sci. IX. (1914) Bot. p. 90; KANEHIRA, Enum. Micron. Pl. (1935) p. 340.

A. P. De CANDOLLE's original description is as follow:

"*T. Mariana*, suffruticosa erecta, caule tereti villosa, foliolis 4-jugis oblongis superne glabris subtus sericeo-argenteis, infimis cauli approximatis, stipulis lanceolato-elongatis villosis, floribus axillaribus confertis subsessilibus et terminalibus subracemosis, leguminibus strictis erectis villosa-velutinis 10-12-spermis. In ins. Marianis. Foliola 2 poll. fere longa, 4-6 lin. lata. (v. s. sine flor.)"

Planta fruticosa, ad 60 cm alta. Caulis usque dense lanatus, striatus. Stipula subulata, aristata, hirsuta, ad 4 mm longa. Folia imparipinnata, 4-



Fig. 11. *Te phrosia mariana* DC. ($\times 1/5$)

jugata, rhachibus ad 10 cm longis lanatis. Foliola superiora majora, inferiora versus minora, ad 6 cm longa et 2.2 cm lata, elliptico-oblonga, apice rotundata mucronataque, basi cuneato-obtusa, integra, coriacea, supra glabra, subtus dense lanata margine incrassatim dense ciliata. penninervia, nervis primariis ca, 10-15, petiolis ad 2 mm longis dense hirsutis. Racemi brevissimi, axillares vel terminales, confertiflori. Calyx oblique campanulatus, extus dense lanatus, tubo ca. 3 mm longo, 5 lobato, lobis deltoideo-ovatis superioribus brevibus ca. 1.5 mm longis, inferioribus longioribus 3 mm longis apice acuminatis, pedi-

cello ca. 2 mm longo, bractea subulata. Vexillum obovato-orbiculatare, extus ferrugineo-hirsutum, intus glabrum, 2 cm longum, 1.5 cm latum. Alæ oblongæ, membranaceæ, 1.4 cm longæ, 4 mm latæ. Carina falcatisemiorbicularis, 1.6 cm longa 6 mm lata. Stamina diadelphica, 1.4 cm longa, antheris ovatis uniformibus 1 mm longis. Ovarium villosum, lineare, sessile ca. 12-ovulatum, 1.1 cm longum, disco annulare 0.5 mm longo, stylo inflexo complanato introrsum barbato ca. 6 mm longo, stigmatibus terminalibus interioribus capitulatis. Legumen ca. 6 cm longum 6 mm latum, villosum, lineare, apice subrecurvatim apiculatum, ca. 12-spermatum.

Hab. *Caroline*: Truk, on a grassland on Mt. Witipen in islet Wara (T. HOSOKAWA, no. 8440! VIII. 15, 1936).

The original description is based on the specimen collected in the Marianne Islands, probably Guam, and the species is confined only to Truk and Guam (SAFFOR no. 250).

Vernacular name in Truk, islet Wara, "Afarafan."

Morianne ガ type locality デアル本種ガ、ハカラズモ Truk 島ニ産スルコトガ判ツタノデ詳細ナ記載ヲ附記シテオイタ。

Maniltoa SCHEFFER in Ann. Jard. Bot. Buitenzorg I. (1876) S. 20; HARMS in ENGL. & PRANTL Nat. Pfl.-fam. Nachtr. I. (1897) S. 193, Nachtr. III. (1908) S. 149; & in ENGL. Bot. Jahrb. LV. (1919) S. 47.

According to H. HARMS, there are about 15 species of this genus, in which 10 on New Guinea, 2 on the Bismarck Archipelago, and 1 respectively on Java, Fiji and the eastern part of India.

Maniltoa Yokotæ (KANEHIRA) HOSOKAWA, *comb. nov.* (§ *Eumaniltoa*)

Cynometra Yokotai KANEHIRA in Bot. Mag. Tokyo XLVI. (1932) p. 454, Fl. Micron. (1933) p. 134.

Hab. *Caroline*: Truk, islet Tol (R. KANEHIRA no. 1277, T. HOSOKAWA, no. 8301!). Endemic.

Meliaceæ

Dysoxylum abo HOSOKAWA, *sp. nov.*

? " ? *Dysoxylum trukensis* KANEHIRA " Enum. Micron. Pl. (1935) p. 345, *nom. nud.*

Arbor glabra, ad 30 m alta. Folia petiolata, 8-9-jugata, ca. 45 cm longa, petiolis glabris; foliola opposita vel subalterna, brevissime petiolata, petiolis 3 mm longis; lamina obliqua, oblonga, recurvata, ad 15 cm longa et 5 cm lata, basi valde obliqua, rotundata vel obtusa, apice abrupte caudata, cauda ca. 8 mm longa, margine integra, 10-12-penninervis, utrinque glabra. Panicula axillaris, divaricatoramosa, pubescens, pedicellis brevissimis, bracteis parvis deltoideis hirsutis. Calyx brevis, 5-lobatus, lobis orbicularibus rotundatis imbricatis extus hirsutis ciliatisque 1 mm longis ca. 1.3 mm latis. Corolla cylindracea, glabra, 4-5-lobata, lobis recurvatis oblongis apice deltoideoacutis imcrassatis 3.5 mm longis 1.5 mm latis extus versus apicem puberulis, tubo corollæ cum tubo stamineo parte medio connato. Tubus stamineus cylin-

draceus, extus dense pilosus, intus pilosus, 8 cm longus, ad orem irregulariter

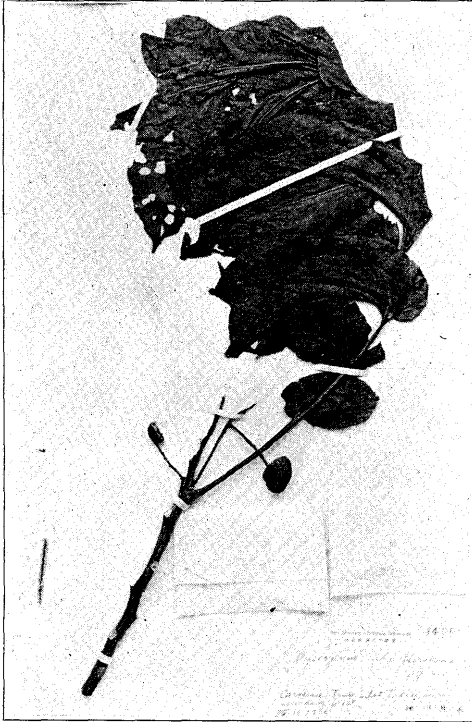


Fig. 12. *Dysoxylum abo* HOSOKAWA, sp. nov. Photograph of the type specimen. $\times 1/5$.

10-dentatus, antheris 8 inclusis sessilibus oblongis 1 cm longis. Discus tubulosocylindræus, ca. 2 mm longus 1 cm in diam. extus glaber, intus puberulus, ad orem 8-dentatus paullo incrassatus. Ovarium parvum, villosum, stylo 8 mm longo apicem versus glabrescente, stigmatè peltato ca. 1 mm in diam. Capsula crasse coriacea, subglobosa, 4-locularis, ad 2 cm longa et crassa, Semina in quoque loculo solitaria.

HAB. *Caroline*: Truk, islet Tadiu, in a secondary forest (T. HOSOKAWA, no. 8400! VIII. 11. 1936—Type in Herb. Taihoku Imp. Univ.) islet Udot, in a primary forest at upper altitudes (T. HOSOKAWA, no. 8357!

VIII. 1, 1936), and also it occurs in a primary forest on islet Fefan and islet Wara. Endemic.

I am inclined to consider the nearest one to the present species may be *D. Bamleri* HARMS described in "K. SCHUMM. & C. LAUTERB. Fl. Deutsch. Schutzg. Süds. (1901) S. 380," which occur on Kaiser Wilhelmsland in New Guinea.

Vernacular name in Truk, "Abo."

Malpighiaceæ

***Ryssopterys timorensis* (DC.) BL.; NIEDENZU in ENGL. Pflanzebr. 93 (1928) S. 283.**

Banisteria Timorensis DC. Prodr. I. (1824) p. 588.

Hab. *Caroline*: Palau, islet Urktable (T. HOSOKAWA, no. 7510!).

Distrib. Malay Archipelago, New Guinea and Palau.

Ryssopterys abutilifolia JUSS.; NIEDENZU in l.c. S. 284.

Ryssopterys Cumingiana (non A. JUSS.) KANEHIRA Enum. Micron. Pl. (1935) p. 345, pro parte.

Hab. *Caroline*: Palau (T. HOSOKAWA, no. 7063!); Truk, islet Trogasi (T. HOSOKAWA, no. 6539!), islet Wara (R. KANEHIRA, no. 1708), (T. HOSOKAWA, no. 1815! islet Tol (T. HOSOKAWA, no. 8299!).

Distrib. New Guinea, Lesser Sunda Islands, Truk and Palau.

Euphorbiaceæ

Aporosa inæqualis PAX et HOFFM. in ENGL. Pfl.-Reich. Heft. 81 (1922) S. 104.

Hab. *Caroline*: Palau (LEDERMANN).

Distrib. Papua, Ceramlaut and Palau.

Croton saipanensis HOSOKAWA, *nom. nov.*

Saipania glandulosa HOSOKAWA, in Trans. Nat. Hist. Soc. Formos. XXV. (1935) p. 28.

Hab. *Marianne*: Saipan (no. 8014!). Endemic.

Mallotus ponapensis HOSOKAWA (§ *Plagianthera*) in Trans. Nat. Hist. Soc. Formos. XXV. (1935) p. 26.

Racemus ♀ axillaris, laxiflorus, dense stellato-pubescent, ad 3 cm longus. Flos ♀: calyx campanulatus, extus dense stellato pubescens, 5-fidus, segmentis lanceolatis. Ovarium subglobosum, subtridymum, dense stellato-pubescent, læve, granuloso-glandulosum, ca. 1 mm altum. Stylus 3, basi leviter connatus, recurvatus, intus plumosus, ca. 3 cm longus.

Hab. *Caroline*: Truk, islet Wara, in a thicket at the top of Mt. Trokken (T. HOSOKAWA, no. 8411! ♀, VIII. 14, 1936).

Distrib. It is confined to Ponape and Truk.

Glochidion Kanehiræ HOSOKAWA, in Trans. Nat. Hist. Soc. Formos. XXV. (1935) p. 22.

Hab. *Caroline*: Truk, islet Tol (T. HOSOKAWA, no. 8300!), islet Wara

(T. HOSOKAWA, nos. 8425 ! 8442 ! 8453 !), islet Uman (T. HOSOKAWA, no. 8482 a!).

Distrib. Endemic on Palau and Truk. The species new to Truk.

Sapindaceæ

The key to the Micronesian species of Allophylus.

§ Inflorescentia simplex, eramosa.

ç Inflorescentia elongata, pubescens, ad 20 cm longa.

..... *A. ternatus* RADLK.

çç Inflorescentia brevis, glabra, ad 6 cm longa. *A. lætus* RADLK.

§§ Inflorescentia ramosa.

ç Foliola late ovata, margine sinuata vel repando-dentata.

..... *A. timorensis* BL.

çç Foliola ovato- vel oblongo-lanceolata integerrima.

..... *A. holophyllus* RADLK.

Allophylus lætus RADLK. in Sitzungsber. Bayer. Akad. XXXVIII. (1908) S. 228, in ENGL. Pflanzenr. 98 (1932) S. 561.

Had. *Marianne*: Saipan (FRITZ), Tinian (T. HOSOKAWA, no. 7793 !).

The species new to Tinian. Endemic.

Allophylus ternatus (FORST.) RADLK. in ENGL. & PRANTL Nat. Pfl.-fam. III.-5. (1815) S. 3 3, in ENGL. Pflanzenr. 98 (1932) S. 572.

Hab. *Caroline*: Truk, islet Udot (T. HOSOKAWA, no. 8345 !), islet Wara (T. HOSOKAWA, no. 8413 !), islet Tol. (T. HOSOKAWA, no. 8297 !).

Distrib. Malay Archipelago, New Guinea, Melanesia, Australia, Caroline (Palau, Yap, Ponape, Kusaie and new to Truk) and Marianne (Rota).

Rhamnaceæ

Smythea lanceolata SUMMERHAYES in Kew Bull. (1928) p. 389.

Ventilago lanceolata TULASNE in Ann. Sci. Nat. sér. IV.-8. (1857) p. 121.

Smythea pacifica SEEM. in Bonplandia IX. (1861) p. 255, X. (1862) p. 35, t. 9, Fl. Vit. (1865) p. 41; K. SCHUMM. & C. LAUTERB. Fl. Deutsch. Schutzg. Süds. (1901) S. 426; C. LAUTERB. in ENGL. Bot. Jahrb. LVI. (1921) S. 524, LVII. (1922) S. 328; KANEHIRA Fl. Micron. (1933) p. 207, fig. 89.

Smythea Dupontii HEMSL. in Journ. Bot. LIV. Suppl. II. (1916) p. 9.

Smythea novo-guineensis SCHEFF. in Ann. Jard. Buit. I. (1876) p. 14.

Smythea Hollungii WEBERB. in ENGL. & PRANTL, Nat. Pfl. fam. III.-5. (1895) S. 400, f. C.D.

Smythea spec. K. SCHUMM. in ENGL. Bot. Jahrb. IX. (1888) S. 207.

Hab. *Caroline*: Truk, islet Tol, in a mangrove swamp (T. Hosokawa, no. 8306 1 VII. 26, 1936).

Distrib. Melanesia, Micronesia, New Guinea and its adjacent islands, Philippines, Malay Archipelago and as far as Seychelles.

The species new to Truk.

Myrtaceae

Eugenia trukensis Hosokawa, sp. nov. (§ *Jambosa*)

Planta persimilis ad *Jambosa synaptoneura* LAUTERB. et K. SCHUM., arborescens, ca. 5m alta. Rami teretes, ramulis tetragonoalatis, alis membranaceis.



Fig. 13. *Eugenia trukensis* Hosokawa, sp. nov. Photograph of the type specimen. $\times 1/5$

Folia opposita, petiolis brevissimis vel sessilibus; lamina lanceolatooblunga, basi cordata vel truncate rotundata, apice obtuse acuminata vel obtusa, utrinque glaberrima, reticulata, penninervis, nervis primariis ca. 10-15, supra viridis, subtus pallidior, ad 17 cm longa et 5.5 cm lata. Cyma axillaris vel terminalis, tamen nec e trunco orta, simplex vel geminata, pendula, ad 11 cm longa pedunculo 4-5cm longo rhacheque terete gracili. Pedicelli 0.5-1 cm longi. Calyx obconico-crateriformis, limbo 4 lobatus, glaberrimus, lobis latissime ovatis submembranceis 2 mm longis 4 mm latis. Petala 4, mox decidua, orbicularia, calyptrata,

ca. 6 mm longa et lata. Stamina numerosa, ca. 1.5 cm longa, antheris ovatis parvis. Stylus 1.5 cm longus. Fructus subglobosus, sanguineus, 2 cm longus, 1.3 cm crassus.

Hab. *Caroline*: Truk, islet Wara, in a primary forest near the top of Mt. Witipen (T. HOSOKAWA, no. 8434! VIII. 15, 1936—Type in Herb. Taihoku Imper. Univ.). Endemic.

Vernacular name in Truk, "Atian."

本種ハ *Jambosa synaptoneura* LAUTERB. et K. SCHUM. = 近似スルモ、一方 Ponape 島産ノ *Eugenia stelechantha* KANEHIRA = モ似ル。後者ト異ル點ハ花序デアアル。

Myrsinaceæ

Discocalyx Mezzii HOSOKAWA, *nom. nov.*

Discocalyx macrophylla MEZ in ENGL. Bot. Jahrb. LVI. (1921) S. 537 [non *Discocalyx macrophylla* MERR. in Philipp. Journ. Sci. V. (1910) Bot. p. 222.]

Hab. *Caroline*: Palau (no. 7452!). Endemic.

Sapotaceæ

Sideroxylon glomeratum VOLKENS in ENGL. Bot. Jahrb. XXXI. (1901) S. 472; MERR. in Philipp. Journ. Sci. IX. (1914) Bot. p. 127; KANEHIRA in Bot. Mag. Tokyo XLV. (1931) p. 339, Fl. Micron. (1933) p. 307 et Enum. Micron. Pl. (1935) p. 388.

Hab. *Marianne*: Agrigan, Pagan, Alamagan, Saipan, Tinian (7812! 7702! 7718!), Rota (7673! 7548!) and Guam. *Caroline*: Yap, Palau (6911! 6918! 7059! 7456!) and Truk.

The species (no. 8449!) is new to Truk, and it is growing in a forest near dry rocky place on Mt. Witipen in the islet of Wara. The species is endemic in Marianne and Caroline.

Asclepiadaceæ

Hoya trukensis HOSOKAWA, *sp. nov.*

Planta ad truncos vel ramos arborum vel fruticum scandens. Caulis filiformis, gracilis, laxe foliatus, teres, glaber. Folia patentia vel erecto-patentia, petiolata, petiolis ca. 1 cm longis glabris; lamina ovata, apice acuminata vel caudato-acuminata vel caudata, basi rotundata, chartacea, utrinque glabra,

supra lucida, 4–5.5 cm longa, 2–2.5 cm lata. Cymus axillaris, umbelliformis, multiflorus, gracilis, pedunculatus, pedunculo ca. 3 cm longo, pedicellis filiformibus tenuibus ca. 1.7 cm longis. Calyx usque ad basin 5-partitus, parvulus, segmentis ovatis hyalinis acutis ca. 2.3 mm longis 1.2 mm latis margine ciliolatis cæterum glabris. Corolla rotata, usque ad medium fere 5-loba, lobis ovato-deltaideis superne dense papilloso-puberulis, versus basin papillosis vel glabratis 4 cm longis 4.5 cm latis. Coronæ squama patens subhorizontalis 2 mm longa 1.5 mm crassa, apice adscendens, crassa, breviuscula, superne ovalis medio leviter concavula, angulo interiore in rostrum acuminata antheris paullo producta, subtus marginibus revolutis sulcata. Anthera deltaidea, appendice hyalino deltaideo-ovato apice acuto. Pollinia oblique obovato-oblong. Stigma vertice pentagonum, medio pyramidatim apiculatum.

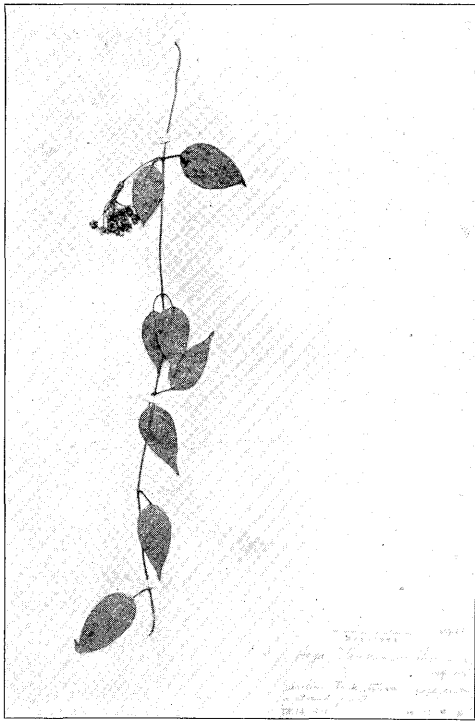


Fig. 14. *Hoya trukensis* HOSOKAWA, sp. nov. Type specimen ($\times 1/5$)

Hab. *Caroline*: Truk, islet Wara, epiphytic on a strand forest (T. HOSOKAWA, no. 8433! VIII. 14, 1936—Type in Herb. Taihoku Imper. Univ.).

I will differentiate the written species with its characteristic leaves from *Hoya Schneei* SCHLTR. which occurs only on Ponape.

Vernacular name in Truk, "Kisfrom."

Dischidia puberula DECNE in DC. Prodr. VIII. (1844) p. 631; MERR. in Philipp. Journ. Sci. IX. (1914) Bot. p. 141; SCHLTR. in ENGL. Bot. Jahrb. LVI. (1921) S. 567.

Hab. *Marianne*: Guam (GAUDICHAUD), Saipan (HÖFER), Rota

(T. HOSOKAWA, nos. 7583 ! 7679!).

The species is new to Rota, and is endemic in Marianne, such islands as mentioned above.

Dischidia Hahlia VOLKENS in ENGL. Bot. Jahrb. XXXI. (1901) S. 473 ; SCHLTR. in l. c. S. 567.

Hab. *Caroline* : Yap (VOLKENS), Palau (T. HOSOKAWA, nos. 6751 ! 7061 ! 7415 !).

The species is new to Palau, and is confined only to Palau and Yap.

Rubiaceæ

Timonius Ledermannii VALETON in ENGL. Bot. Jahrb. LXIII. (1930) S. 305 ; KANEHIRA in Bot. Mag. Tokyo XLV. (1931) p. 350, Fl. Micron. (1933) p. 384, f. 208, et Enum. Micron. Pl. (1935) p. 426.

Hab. *Caroline* : Truk, in a primary mountain forest at the summit of islet Tol (T. HOSOKAWA, no. 8260 ! VII. 25, 1936), Ponape (nos. 5673 ! 5705 ! 5769 ! 5970 !).

It is confined to Ponape and Truk. The species is new to Truk.

Vernacular name in Truk, "Shouri."