

著 Flora of British India VII : 123 (1890) デ印度ニ本種ガ発見サレタコトヲ報ジタ、シカシコノ印度産ハ根莖ニハ披針形ノ鱗片ガ密布シ、花ノ唇瓣ニハ前唇ガ平板狀ヲナスコトナク深く切レ込メシヨウキランニ於ケルガ如キ前方ニ向ヘル距ヲ有シナイ明ラカナ別種デアツテ、KING 及 PANTLING 兩氏ガ Sikkim 産ノモノデ精細ナ圖ト記載ヲ用意シ *Yoania Prainii* KING et PANTLING³⁾ トシテ前人ノ誤リヲ正シタ。唯ソノ Syn. 中ニ前記 BENTHAM 氏ノ圖ヲ引用シテ居ルノハ誤リデ、BENTHAM 氏ニヨレバコノ圖ハ MAXIMOWICZ 氏ガ自ラ長之助翁ノ標本ヲすけつちシテ送ツタモノ、由デアルカラ明ラカニ日本ノモノヲ描イタノデアツテ、腊葉カラノすけつちノタメニ唇瓣ガ甚ダ不得要領ノ形ニナツテ居ツタコトニ起因スルノデアラウ、コレガ第二ノ *Yoania* デアルガソノ特徴カラ云ツテ甚ダ特異ノモノデアリ別屬トスルガヨイカモ知レヌ。後二年ニシテ今度ハ FINET 氏ガ第三ノ種 *Yoania abberans*⁴⁾ ヲ日本カラ記載シタ。ガ實ハ *Yoania* デハナクテまやらん近似ノ種類デアルカラ現在デハ *Pachyrhizanthus abberans* NAKAI⁵⁾ トシテ本屬トハ關係ガナクナツタ。ソノ次ガコノきばなのシヨウキランデ都合三種ガ現在ノ *Yoania* ノ域内ニ含マレテ居ルノデアル。

(昭和十年十一月廿日記)

Observaciones ad Plantas Asiae Orientalis (IX)

auctore

Hiroshi HARA

原 寛：東亞植物考 (其九)

59) ***Geranium shikokianum*** MATSUMURA in Bot. Mag. Tokyo XV, p. 123 (1901)—MATSUMURA, Ind. Pl. Jap. II-2, p. 284 (1912)—NAKAI in Bot. Mag. Tokyo XXVI, p. 259 (1912).

Nom. Jap. *Iyo-fûro* (J. MATSUMURA).

Hab. Honshu : prov. Suruga : in monte Ashitaka (T. SAWADA)—ibid. (K).

³⁾ KING et PANTLING in Annals of Roy. Gard. Calcutta VIII : 175. Pl. 237 (1898)

⁴⁾ FINET in Bull. Soc. Bot. France, XLVIII : 274 t. 9-B (1900).

⁵⁾ NAKAI in Bot. Mag. Tokyo, XLV : 110 (1931).

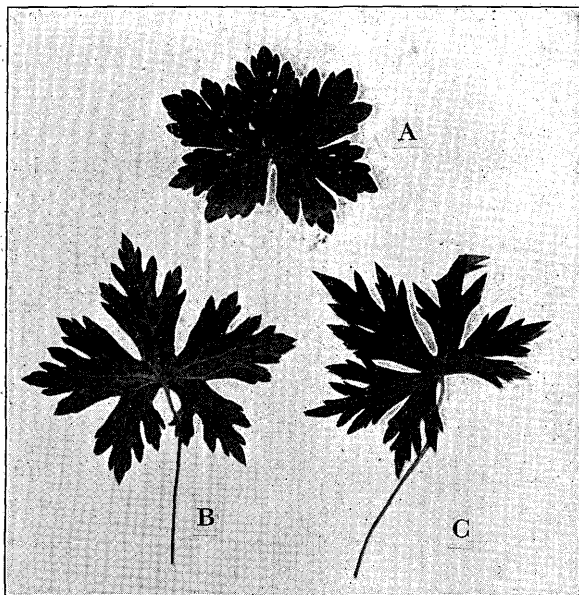


Fig. 26. Leaf of (A) *Geranium shikokianum* MATSUMURA いよふうろ

(B) *G. shikokianum* var. *kai-montanum* HONDA et HARA かひふうろ

(C) *G. shikokianum* var. *yamatense* HARA やまとふうろ

p. 317 (1930).

Nom. Jap. *Kai-fûro* (M. HONDA).

Hab. Honshu: prov. Kai: in monte Mitsu-tôge (K. HISAUCHI—type of *G. kai-montanum*)—ibid. (M. HONDA)—ibid. (Y. SATAKE).

var. **yamatense** HARA, var. nov.

Differt a var. *kai-montanum* lobis foliorum acutioribus densius pubescentibus.

Nom. Jap. *Yamato-fûro* (nov.)

Hab. Honshu: prov. Yamato: in monte Ômine (Z. TASHIRO—Aug. 24, 1929—type)—in monte Shaka-ga-take (S. SUZUKI—Aug. 4, 1935).

HISAUCHI). prov. Hôki: in monte Daisen (T. SAWADA)—ibid. (S. HATTORI). prov. Iwami: in monte Sanbe (T. SAWADA).

Shikoku: prov. Awa: in monte Tsurugi (J. NIKAI). prov. Tosa: in monte Tebako-yama (S. YANO—one type). prov. Iyo: in monte Ishidzu-ehi-san (T. MAKINO—one type).

var. **kai-montanum**

(HONDA) HONDA et HARA, comb. nov.

Syn. *Geranium kai-montanum* HONDA in Bot. Mag. Tokyo XLIV,

60) ***Clinopodium chinense*** O. KUNTZE, Rev. Gen. Pl. II, p. 515 (1891)—MATSUMURA, Ind. Pl. Jap. II-2, p. 538 (1912) quoad pl. ex Liu-kiu et Formosa.

Syn. *Calamintha chinensis* BENTHAM in DC., Prodr. XII, p. 233 (1848)—

MAKINO in Bot. Mag. Tokyo IX, p. [13] (1895)—MATSUMURA et HAYATA, Enum. Pl. Formos. p. 310 (1906)—HANDEL-MAZZETTI in Acta Hort. Gotob. IX, p. 86 & 87 (1934).

Calamintha Clinopodium var. *chinensis* MIQUEL in Ann. Mus. Bot. Lugd.-Bat. II, p. 107 (1865) observatione.

Satureia chinensis BRIQUET in ENGLER, Pfl.-fam. IV-3a, p. 302 (1897)—KUDO in Mem. Fac. Sci. & Agr. Taihoku Imp. Univ. II-2, p. 102 (1929) (*α. parviflora*) pro parte.

Caules foliaque dense pubescentia, pilis albis mollibus. Verticillastri dense glomerati. Bracteæ calyce subæquilongæ. Calyces bracteæque villosi, pilis longis mollibus vulgo partim glandulosi. Corollæ minores.

Nom. Jap. *Okinawa-kurumabana* (Y. TASHIRO).

Hab. Kyushu (Urakami prope Nagasaki, prov. Hizen—F. C. GREATREX; an elapsa?), Liukiu, Formosa et China australis.

C. chinense

subsp. **grandiflorum** (MAXIMOWICZ) HARA, subsp. nov.

var. **grandiflorum** (MAXIMOWICZ) HARA, comb. nov.

Syn. *Calamintha chinensis* BENTHAM var. *grandiflora* MAXIMOWICZ, Prim. Fl. Amur. p. 217 (1859)—HERDER in Bull. Soc. Imp. Natural. Moseou LXI-1, p. 162 (1885) pro parte—KORSHINSKY in Acta Hort. Petrop. XII, p. 377 (1892)

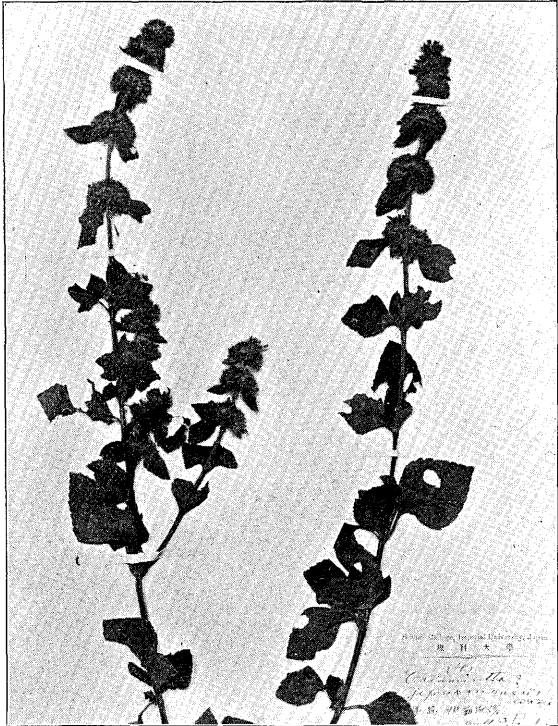


Fig. 27. *Clinopodium chinense* O. KUNTZE
おきなはくるまばな

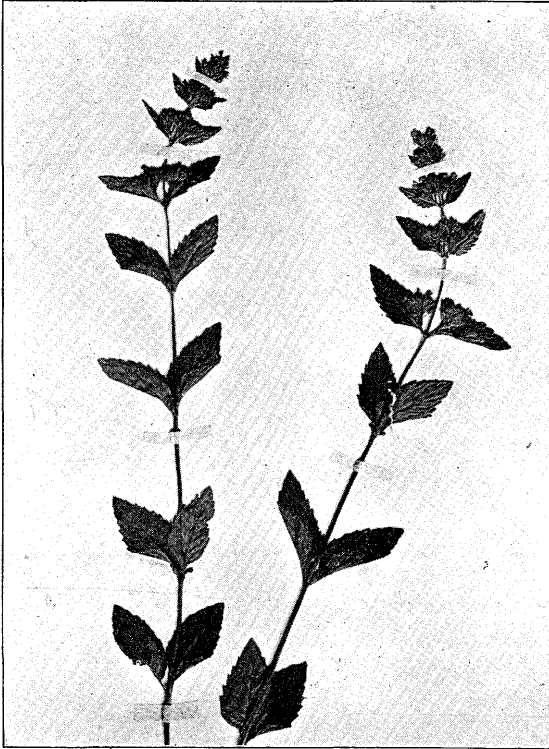


Fig. 28. *Clinopodium chinense* subsp. *grandiflorum*
HARA まんしうくるまばな

Calamintha Clinopodium BENTHAM var. *urticifolia* Hance in Ann. Sci. Nat. ser. 5, V, p. 235 (1866)—HERDER, l. c. in adnota (1885).

Calamintha chinensis (non BENTHAM) PALIBIN, Consp. Fl. Korea. II, p. 27 (1900)—KOMAROV, Fl. Mansh. III, p. 374 (1907).

Satureia chinensis (non BRIQUET) NAKAI, Fl. Korea. II, p. 148 (1911); in Bot. Mag. Tokyo XXXV, p. 193 (1921)—KUDO in Mem. Fac. Sci. & Agr. Taihoku Imp. Univ. II-2, p. 102 (1929) (*α. parviflora*) pro parte.

Calamintha coreana LÉVEILLE in FEDDE, Rep. Sp.

Nov. IX, p. 246 (1911)—NAKAI, Fl. Korea. II, p. 509 (1911).

Calamintha urticifolia HANDEL-MAZZETTI in Acta Hort. Gotob. IX, p. 83 & 86 (1934).

Clinopodium coreanum HARA, mss.

Caules simplices vel breviter ramosi secus angulos retrorso-hirsuti. Folia sæpe majora et argute serrata. Cymæ pedunculatæ subclaxæ. Verticillastri sæpe inter se remoti. Bracteæ calyce subæquilongæ patenter et rigide hirsutæ. Calyces purpurascens, inferne minutissime pubescentes et patenter hirsuti, pilis rigidulis eglandulosis.

Nom. Jap. *Manshû-kurumabana* (nov.).

Hab. Manshuria, Korea et China borealis.

C. chinense subsp. *grandiflorum*

var. **parviflorum** (KUDO) HARA,

comb. nov.

Syn. *Clinopodium vulgare* (non L.)

THUNBERG, Fl. Jap. p. 247 (1784).

Calamintha Clinopodium (non BENTHAM) MIQUEL in Ann. Mus. Bot. Lugd.-Bat. II, p. 107 (1865) saltem pro parte.

Calamintha chinensis (non BENTHAM) FRANCHET et SAVATIER, Enum. Pl. Jap. I, p. 369 (1875).

Clinopodium chinense (non O. KUNTZE) MATSUMURA, Ind. Pl. Jap. II-2, p. 538 (1912) pro parte.

Satureia chinensis (non BRIQUET) KUDO in Journ. Coll. Sci. Imp. Univ. Tokyo XLIII-8, p. 37 (1921); in Mem. Fac. Sci. & Agr. Taihoku Imp. Univ. II-2, p. 102 (1929) — MASAMUNE, Fl. & Geobot. Stud. Yakusima p. 392 (1934).

Satureia chinensis α . *parviflora*

KUDO, l. c. p. 38, t. II, fig. 25, a-c (1921) pro major. part; l. c. p. 103 (1929) pro parte.

Satureia chinensis β . *megalantha* KUDO, l. c. p. 39, t. II, fig. 25, d-f (1921) excl. syn.; l. c. p. 103 (1929) pro parte.

Calamintha polycephala (non VANIOT) HANDEL-MAZZETTI in Acta Hort. Gotob. IX, p. 84 (1934) pro parte.

Caules ramosi vel simplices. Verticillastri subsessiles. Bracteæ calyce subæquilongæ, patenter et rigide hirsutæ. Flores 7-11 mm. longi calycem superantes. Calyces hirsuti, pilis patentibus rigidulis, et inferne minute pubescentes raro glanduloso-pilosi, sæpe purpurascetes.

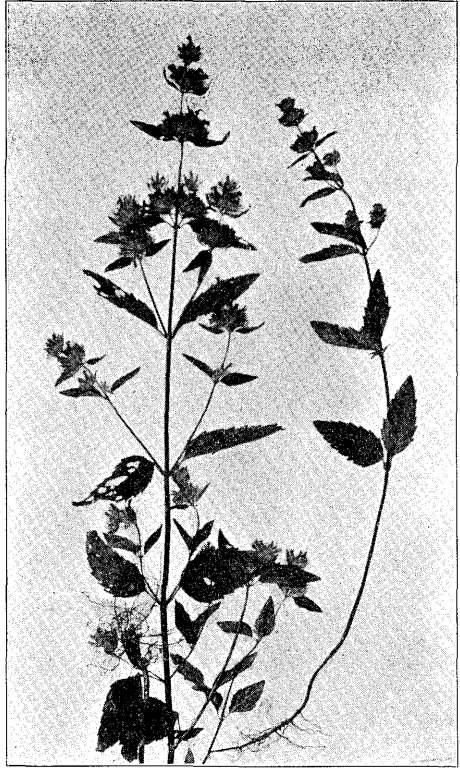


Fig. 29. *Clinopodium chinense* subsp. *grandiflorum* var. *parviflorum* HARA. くるまばな Specimen from Yezo.

Nom. Jap. *Kurumabana*, *Oku-kurumabana* (KUDO).

Hab. Kyushu, Shikoku, Honshu, Yezo, Kuriles australes et Korea.

I adopt the variety-name 'parviflorum' not in KUDÔ's original meaning, but in a wide sense to cover various Japanese forms. Dr. HANDEL-MAZZETTI referred our plants to *Calamintha polycephala* VANIOT (including *C. tsacapanensis* LÉV.) of China, which, however, has smaller flowers than our plant, with bracts conspicuously shorter than the calyx. Our plant is very variable in regard to hairiness of stems and leaves, as Dr. KUDÔ had proposed the name f. *pubescens* and f. *lanata*. In southern Korea a common form seems to be intermediate between this variety and the typical subspecies *grandiflorum*.

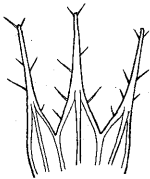


Fig. 30. Upper calyx-lobes of *Clinopodium chinense* subsp. *grandiflorum* var. *parviflorum* f. *setilobum* HARA. ($\times 8$)

f. **albiflorum** HARA, f. nov.

Flores albi. Calyces bracteæque virides.

Ceteri ut in var. *parvifloro*.

Nom. Jap. *Shirobana-kurumabana* (nov.)

Hab. Honshu : prov. Sagami : ZUSHI (Y.

MOMIYAMA—typus). prov. Noto : Usetsu (H. HARA).

f. **setilobum** HARA, f. nov.

Caules vulgo simplices, præsertim superne retrorso-hirsuti. Folia sæpe argute serrata utrinque hirsuta. Verticillastri dense glomerati subsessiles. Bracteæ calyce subæquilongæ minutissime pubescentes et patenter hirsutæ, pilis longis rigidulis. Calyces 7–8 mm. longi leviter curvati minutissime et dense pubescentes et superne patenter hirsuti sæpe purpurascens; lobis apice longe subulatis basi dilatatis margine patenter et rigide hirsutis, superioribus ca. 2 mm. longis, inferioribus ca. 3 mm. longis. Colloræ calycem superantes.

Nom. Jap. *Nikko-kurumabana* (nov.)

Hab. Honshu: prov. Mutsu: in monte Iwaki (J. MATSUMURA—Jul. 24, 1880). prov. Uzen: eire. Hondôji-mura (S. ÔKUBO). prov. Shimotsuke: Senjôgahara, Nikko (H. ITÔ—1931—typus)—Chûzenji, Nikko (H. ITÔ). prov. Kodzuke: in monte Tanigawa (K. HISAUCHI). prov. Musashi: in monte Takao (S. HATTORI). prov. Suruga: in monte Fuji 800 m. (B. HAYATA)—in oppido Setonoya (D. SHIMIDZU). prov. Echizen: in sylva nationale Kurokawa (Z. TASHIRO).

This is only an extreme form with subulate calyx-lobes.

C. chinense subsp. *grandiflorum*

var. **shibetchense** KOIDZUMI in Bot. Mag. Tokyo XLIII, p. 387 (1929).

Syn. *Calamintha umbrosa* BENTHAM var. *shibetchensis* LÉVEILLÉ in FEDDE, Rep. Sp. Nov. IX, p. 322 (1911)—MATSUMURA, Ind. Pl. Jap. II-2, p. 537 (1912); fide Dr. KOIDZUMI.

Satureia chinensis BRIQUET var. *pallescens* NAKAI, Rep. Veg. Diamond Mts. p. 183 (1918) nom. nud.—MORI, Enum. Pl. Corea. p. 305 (1922) nom. nud.

Clinopodium japonicum MAKINO in Journ. Jap. Bot. III-8, p. 30 (1926) pro parte.

Satureia Makinoi KUDO in Mem. Fac. Sci. & Agr. Taihoku Imp. Univ. II-2, p. 105 (1929) pro parte.

Caules foliaque minus pubescentia. Flores interdum minores. Corollæ pallidiores. Calyces bracteæque viridescentes sæpe glanduloso-pilosi. Ceteri ut in var. *parvifloro*.

Nom. Jap. *Yama-kurumabana* (NAKAI 1918), *Yama-kurumabana* (MAKINO 1926), *Yezo-kurumabana* (KOIDZ. 1929), *Awo-kurumabana* (KOIDZ. 1929).

Hab. Yezo, Honshu, Kyushu et Korea.

In accordance with Dr. KOIDZUMI's opinion I retain this name for the glabrescent plant with green bracts and calyces, but I have no specimens conforming with LÉVEILLÉ's original description.

C. chinense

subsp. **glabrescens** (NAKAI) HARA, comb. nov.

Syn. *Clinopodium japonicum* MAKINO in Journ. Jap. Bot. III-8, p. 30 (1926) pro parte.

Satureia ussuriensis f. *robustior* NAKAI in Bot. Mag. Tokyo XLV, p. 133 (1931) excl. syn.

Satureia ussuriensis KUDO var. *glabrescens* NAKAI in Bot. Mag. Tokyo XLV, p. 133 (1931); Kôryô-Shikenrin-Ippan p. 56 (1932).

Nom. Jap. *Ao-miyama-tôbana* (NAKAI 1931), *Ô-miyama-tôbana* (NAKAI 1931).

Hab. Honshu et Korea.

A specimen from Naka-arai-machi near Tokyo which was determined by Dr. MAKINO himself as his *C. japonicum*, agrees perfectly with the type

specimen of *Satureia ussuriensis* var. *glabrescens*. It is a peculiar form with glabrescent stems and leaves, loose inflorescences, small white corollas, shorter bracts and smaller green calyces which are sparsely patent-hirsute and glandular-pilose. This form, however, merges into subsp. *grandiflorum* through its variety *shibetchense*.

Clinopodium chinense is an exceedingly polymorphous plant, varying extensively in regard to hairiness of stems and leaves, shape of leaves and inflorescences, size of calyces and corollas, character of hairs on bracts and calyces, and shape of upper calyx-lobes. Dr. HANDEL-MAZZETTI recently classified the Chinese materials under three species, distinguished principally by the character of the calyx-hairs, but he admits, in a note, that intermediates are often encountered. Anyone comparing the Manchurian plant with the typical *C. chinense* alone would treat them as distinct species, but, when all inter-connecting forms from various localities are taken into consideration, the grounds for specific distinction seem to me to disappear.

61) **Orthodon hirtum** HARA, sp. nov. (Sect. *Eumosla*).

Syn. *Mosla hirta* HARA, mss.

Caulis 30–60 cm. altus atro-purpurascens præcipue ad angulos et nodos albo-hirsutis, pilis retrorso-patentibus, ramosus, ramis ascendentibus. Folia ovata vel late ovata apice acutiusecula margine præter basin late cuneato grosse serrata vulgo 2–5 cm. longa 0.8–3 cm. lata membranacea hirsuta. pilis longis albis, supra viridia, subtus sæpe atro-purpurascencia glanduloso-punctata, longe petiolata, petiolis apice alatis 0.5–3 cm. longis albo-hirsutis. Racemi apice caulis vel rami terminales, in fructu usque ad 5 cm. longi. Bracteæ minutæ lanceolatæ acutissimæ recurvæ 1–1.5 mm. longæ. Pedicelli 0.5–1 mm. longi pubescentes, in fructu usque ad 3 mm. longi. Calyces sub anthesin ca. 1.5 mm. longi dense hirsuti et glandulosi bi-labiati; labium superius trilobum, lobis lanceolatis mediis ceteris paullo brevioribus; labium inferius bi-fidum, lobis anguste lanceolatis; calyces in fructu accrescentes 4.5–5.5 mm. longi basi leviter gibbosi intus fauce rigide annulari-hirsuti, lobis inferioribus superioribus longioribus acutissimis 2.5–3.5 mm. longis intus fauce pilosis. Corollæ roseæ calyces subduplo-superantes 2.5–4 mm. longæ apice pilosæ; labium su-

perius tri-lobum, lobo medio lato apice emarginato; lobum inferius latum apice paullo emarginatum intus fauce dense albo-pilosum et luteopunctatum. Stamina 4 inserta, 2 dorsalia fertilia apice conniventia, ventralia sterilia antheris abortivis. Styli inserti, stigmatibus subæqualiter bifido. Nuculæ depresso-globosæ ca. 1.3 mm. longæ brunneæ laxè reticulatæ.

Nom. Jap. *Shirage-himejiso* (nov.)

Hab. Honshu: prov. Iwaki: in oppido Kozeki-mura (T. SUZUKI-Sep. 9, 1935—typus; Sep. 30, 1933).

Planta endemica.

This plant is closely allied to *Orthodon grosseserratum* KUDO, but the stems and leaves are hirsute with long white hairs, the stems and the under-surface of leaves often dark purplish, and the lobes of calyx narrower and more pointed.

59) いよふうろ・かひふうろ・やまとふうろ (新變種) 初メ四國ニ發見サレタいよふうろハ其後中國ヤ九州ニ分ツテキタガ、遂ニ遠ク駿河、愛鷹山ニ見出サレタ。コレト近縁デ葉ニ毛少ク裂片ノ尖ルモノガ甲州、三ツ峠デ知ラレ、かひふうろト呼バレテキルガ、いよふうろノ地方的變種ト見做ス方ガ妥當ト思フノデ本田博士ノ御同意ヲ得テ學名ヲ *Geranium shikokianum* var. **kai-montanum** HONDA et HARA ト改メル。又大和、大峯山ニモコレニ似テ葉ガかひふうろ以上ニ深ク切レテ尖リ、毛ハ多イモノガアル。コレモいよふうろノ變種トシテやまとふうろ (*G. shikokianum* var. **yamatense** HARA) ト呼ブ事ニスル。

60) くるまばな類 先ニたふばな類ノ分類ヲ試ミタガ、コノ類ハソレニモ増シテ分類困難ナ群デアル。地方的ニ可成リ判然トシタ形ガアルガ、各地カラノ材料ガ集レバ集ル程中間形ガデキテ、結局種トシテ分ツ事ガデキナクナツテクル。先ヅ問題トナルノハ *Clinopodium chinense* ノ基準形デアルガ、BENTHAM ノ原記載ニ琉球ノ標本ガ引用サレテキル事ト、HANDEL-MAZZETTI ガ最近支那ノ本類ヲ分類シタ際南支那・臺灣ノ形ヲ基準形トシテキル事トニヨツテ、基準標本ノ見ラレナイ現在ニ於テハ、琉球・臺灣ノモノヲ基準形トシテ取扱フ事ニスル。コノ形 (Fig. 27) ハ全體ニ白軟毛ヲ密布シ、萼ニアル毛ハ長ク軟ク屢ニ腺毛ヲ混ジ、花序ハ密ニ球狀ニカタマリ、花ハ小サイ。和名ハ故田代安定氏ノツケラレタおきなはくるまばなヲトル。最近長崎近クデ F. C. GREATREX 氏ガ採集サレタガ或ハ琉球ヨリ移入サレタモノカモシレナイ。

コノ基本形カラ最モカケハナレタ形ノモノ (Fig. 28) ガ 滿洲方面ニアル。全體毛少ク、花序ハ稍疎デ著シイ柄ヲ持チ、花ハ大キク、萼ニハ稍剛イ毛ガ生エ腺毛ハナイ。コノ形ヲ亞種トシテ區別シ、最モ古イ MAXIMOWICZ ノツケタ變種名ヲトリ subsp. **grandiflorum** HARA まんしうくるまばなトスル。内地ノくるまばなハ前二者ノ中間ニ位スル形デ、花序ハ略無梗、萼ノ毛ハ剛ク、花ハ大キイノガ普通デアアル (Fig. 29)。學名ハ故工藤博士ガ北海道デツケラレタ名ヲ廣イ意味デ採用シ、var. **parviflorum** HARA トイフ組合ヲ作ツタ。毛ノ多少、花序ノ形、花ノ大サ等千變萬化デ、低地ノモノ或ハ山地ニ多キモノ、又時期ニヨツテモ色々ノ形ガアリ、アルモノハおきなはくるまばなニ或ルモノハまんしうくるまばなニ近ツイテクル。HANDEL-MAZZETTI 氏ハ支那ノ *Calamintha polyccephala* ニ入レタガ支那産ノモノハ苞ガ短カク花ガ小サイ。くるまばなノ白花品ヲ白花くるまばな (f. **albiflorum** HARA) トイフ。又日光其他ニ、萼上唇ノ裂片ガ針狀ニ長ク尖リ (Fig. 30) 全體一寸みやまくるまばなニ似タ形ガアル。勿論中間形モアルガ著シイモノニ日光くるまばな (f. **setilobum** HARA) ト名付ケテオク。くるまばなノ萼ハ苞ガ綠色デ、花色モ淡ク、全體毛ノ少イ形ガ所々ニアル。えぞくるまばな (var. **shibetschense** KOIZUMI) ハコノ形ヲ指スモノト思フ。日蔭ニ多ク、萼ニハ短腺毛ヲ有シテキル事ガ多イノハ面白イ。中井先生ノやまくるまばなハ略コノ形ト一致シ、牧野先生ノやまくるまばなノ少クモ一部ヲナス形デアラウ。

次ニ東京、板橋區、中新井町デ採集サレ牧野先生ガやまくるまばなト鑑定サレタ標本ガ武藏高等學校ニアル。コレハ全體綠色デ毛少ク、花序モ疎ニナリ、花小サク、苞ハ短カク、萼ニハ疎毛ト短腺毛トヲ有シ、一見たふばな類ト思フ様ナ變ツタ形デアアル。所ガ朝鮮光陵デ中井先生ガあそみやまたふばなトサレタ標本ガ全クコレト一致スル事ハ誠ニ興味深イ。併シたふばな類トハ花序ガ密ナ事、苞ガ針狀デ長イ事、萼ガ筒狀ナ事、萼上唇ノ裂片ノ先端ガ針狀ニ尖ル事デ異ル。コノ形モえぞくるまばなヲ經テくるまばなニ連絡スルト思ハレルノデア亞種トシテ subsp. **glabrescens** HARA トスル。

61) しらげひめじそ(新種) 磐城、西白河郡、古關村デ鈴木貞次郎氏ノ採集サレタモノデ、概形・種子等ハひめじそニ似テキルガ、全體ニ白長毛ヲ布キ、莖ヤ葉下面ハ屢々暗紫色ヲ帯ビ、萼裂片ハ細ク鋭ク尖ツテキル。生育地デハ一見普通ノひめじそト區別デキルサウデアアル。新種トシテ **Orthodon hirtum** HARA ト名付ケル。