

THE JOURNAL OF JAPANESE BOTANY.

EDITED BY

TOMITARÔ MAKINO.

LECTURER OF BOTANY IN THE FACULTY OF SCIENCE,
IMPERIAL UNIVERSITY OF TOKYO.

Vol. III.

April 30, 1926.

No. 4.

Published by the Tsumura Laboratory, Tokyo, Japan.

A Contribution to the Knowledge of the Flora of Japan.

(Continued from p. 12.)

By

Tomitarô Makino.

***Prunus serrulata* LINDL. subsp. *pubescens* MAKINO, var. *antiqua* (MIYOSHI) MAKINO, nov. comb.**

Prunus antiqua MIYOSHI in Bot. Mag., Tokyo, XXXVI. (1922), p. 10.

Prunus pudibunda forma antiqua KOIDZ. in Bot. Mag., Tokyo, XXXVII. (1923), p. 44.

Prunus serrulata var. *spontanea* subvar. *pubescens forma chrysanthemiflora* MAKINO, ined.

Flowers double, rosy, with narrow petals. Ovaries often 2.

Nom. Jap. *Nara-yaezakura*, *Nara-no-yaezakura*, *Nara-zakura*.

Hab. Prov. MUSASHI: Tôkyô, cult. (T. MAKINO!).

Very rare.

***Rubus Buergeri* MIQ. var. *pseudo-Sieboldii* MAKINO, var. nov.**

Stem more robust. Leaves larger and thicker.

Nom. Jap. *Ô-fuyûichigo* (nov.).

Hab. Prov. AWA in Shikoku (T. MAKINO!); Prov. KII (T. MAKINO!).

***Boykinia Watanabei*, (YATABE) MAKINO, nov. comb.**

Saxifraga Watanabei YATABE in Bot. Mag., Tokyo, VI. (1892), p. 43, tab. 2, et Iconogr. Fl. Jap. I. 3, p. 179, tab. 44.

Saxifraga tellimoides var. *Watanabei* MAKINO in Bot. Mag., Tokyo, XV. (1901), p. 12, XVII. (1903), p. 115.

Nom. Jap. *Watanabe-sô*, *Momidzi-yawatuzô*.

Hab. Prov. TOSA, shady mountains.

***Castanea crenata* SIEB. ET ZUCC. forma *gigantea* MAKINO, nov. f.**

Nuts very large.

Nom. Jap. *Tamba-guri*.

Hab. JAPAN.

var. *pleiocarpa* MAKINO, nov. var. (Fig. I.)

Nuts usually 7 or rarely 8 in each prickly cupule, which dehiscent early, small in size.

Nom. Jap. *Hako-guri*.

Hab. Prov. MUSASHI: Ôidzumi (T. MAKINO!).

Very rare!

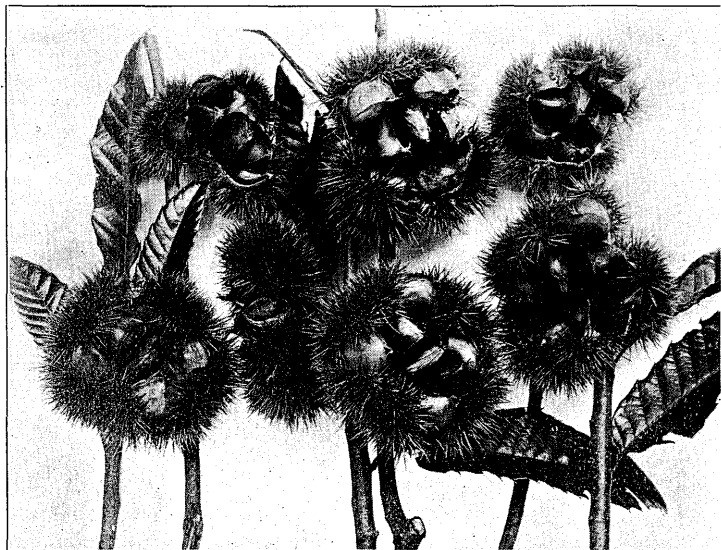


Fig. I. *Castanea crenata* SIEB. ET ZUCC. var. *pleiocarpa* MAKINO.

var. *femina* MAKINO, var. nov.

Catkins all pistillate-flowered, without any staminate flower.

Nom. Jap. *Yatsubusa-guri*.

Hab. Prov. SHINANO: Kwannonzawa in Wadatôge (REIZÔ KÔNO! July 18, 1924).

var. pendula (MIYOSHI) MAKINO, nov. comb.

Castanea sativa var. *pendula* MIYOSHI in Bot. Mag., Tokyo, XXXIII. (1919), p. 187.

Castanea pubinervis var. *pendula* MIYOSHI, l. c. XXXIV. (1920), p. 185. Branches pendulous.

Nom. Jap. *Shidare-guri*.

Hab. JAPAN.

***Illicium anisatum* L. var. rosea** MAKINO, nov. var.

Leaves oblong or obovato-oblong, petiolate. Pedicels long, attaining about 2½ cm. long, greenish-rosy. Flowers subnutant, stellato-patent, about 4 cm. across. Outer-perianth rosy, narrowly oblong; the inner yellowish white, linear-lanceolate, with narrowly revolute margins. Ovaries about 10.

Nom. Jap. *Usuben-shikimi* (nov.).

Hab. Prov. TOSA: Sakawa (T. MAKINO).

***Colocasia antiquorum* SCHOTT, var. esculentum** SCHOTT, forma **multifolia** MAKINO.

Colocasia antiquorum var. *multifolia* MAKINO in Journ. Jap. Bot. I. p. 4 (1916).

Nom. Jap. *Yatsugashira-imo*.

Hab. JAPAN, cultivated.

forma patens MAKINO.

Colocasia antiquorum var. *patens* MAKINO in INUMA, Sômoku-Dzuzetsu, ed. 3, IV. p. 1253.

Branch-rhizomes elongate, trailing along the ground, attaining about 3 decim. or more in length.

Nom. Jap. *Take-imo*.

Hab. JAPAN, cultivated.

forma rosea MAKINO.

Colocasia antiquorum var. *rosea* MAKINO in INUMA, Idem.

The very base of petioles rose-coloured, tuberous rootstock comparatively small.

Nom. Jap. *Me-aka*.

Hab. JAPAN, southern, cultivated for the edible petiole.

forma Maimo MAKINO, leaves green; **f. Oyasetage** MAKINO, the main rootstock comparatively small, branch-rootstocks very numerous, leaves green; **f. Eguimo** MAKINO, leaves deep-green, the rootstock strongly pungent; **f. Egunai** MAKINO, leaves green, the rootstock moderately pungent; **f. purpurea** MAKINO, larger, rootstock large, the branch-rootstock very scanty, petiole tall, dark-purple. - Jap. name: *Tônoimo*; **f. Yamatoimo** MAKINO, rootstock very large, skin rosy, petiole purplish towards the base; **f. aquatica** MAKINO, growing by the spring, leaves green.

These forms are commonly cultivated for food in Japan.

***Ilex serrata* THUNB. var. Sieboldi** LOES. forma **leucocarpa** MAKINO, nov. f. Flowers and fruits white.

Nom. Jap. *Shiro-umemodoki*.

Hab. JAPAN.

***Sasa hannoensis* MAKINO, nov. sp.**

Rhizome hypogaeous, long-creeping, terete, rooting at the nodes. Culm erect, attaining about 1½m. in height and about 5mm. in diameter, ramose above, terete, fistulose, smooth and very finely striate, green, often purplish, usually with old sheaths, with prominent nodes and white bloom under it; branches and branchlets solitary to each node, erect-patent, usually enclosed with sheaths. Leaves several towards the top of branchlets, palmato-pinnately arranged, lanceolate or narrow-lanceolate, gradually acuminate with a fine point at the apex, rounded or rounded-obtuse at the base but acute or acutish-obtuse at the superior ones, 12-23cm. long, 1½-4cm. broad, thinly chartaceous, green and glabrous above, paler and thinly pubescent beneath, minutely spinulose on margins and pilose on the basal one margin; midrib very slender, prominent beneath; veins 5-8 on each side; veinlets finely tessellate; petiole short, flattened, puberulous in front; ligule very short, truncate, minutely puberulous dorsally; sheath long, closely enclosed the branchlets, glabrous, finely striate, more or less very minutely ciliated on the one margin; fimbriae setiform, erect, flabellate, not stiff, deciduous.

Nom. Jap. *Hannô-zasa* (nov.).

Hab. Prov. MUSASHI: Hannô (T. MAKINO!).

***Sasa Hayatae* MAKINO, nov. sp.**

Rhizome hypogaeous, long-creeping, terete, rooting at the nodes. Culm erect, about ½-1½m. in height, ¼-½ cm. in diameter, ramose above, terete, smooth, green, often purplish, enclosed at first with hirsute shoot-sheaths which become glabrate soon, with the slightly prominent nodes; branches solitary to each node, erect-patent, enclosed with sheaths. Leaves palmato-pinnately arranged with 3-6 towards the top of branchlets, shortly petiolate, oblong-lanceolate or lanceolate, gradually acuminate at the apex, rounded-obtuse at the base but acutish-obtuse or acute at the apical one, minutely spinulose on margins, 10-20cm. long, 2-4cm. wide, chartaceous, green and glabrous above, paler and thinly pubescent (hairs longer on the midrib and the basal portion) beneath, more or less narrowly decay on both margins in winter; midrib slender, prominent beneath; veins 6-10 on each side; veinlets minutely tessellate beneath; petiole 3-7mm. long, flattened, densely puberulous towards the base in front; ligule short, truncato-rounded, about 1½mm. long, minutely ciliated, puberulous dorsally; sheath long, closely enclosed the branches, at first hirsute, soon after glabrate, often purplish, many-striate, ciliated with white patent hairs on the one margin; fimbriae soon deciduous.

Nom. Jap. *Miyama-ikumazasa*.

Hab. Prov. MUSASHI: Mt. Takao (T. MAKINO!).

I have named this new species in commemoration of Prof. BUNZÔ HAYATA of the Botanical Institute, Imperial University of Tôkyô.

(To be continued.)